

COMMUNITY NEWSLETTER  
EDITION THREE 2020

# LET'S CONNECT

PHOTOGRAPHY  
COMPETITION  
PAGE 11

ADDED SUPPORT  
DURING COVID-19  
PAGE 2-3



Free mobile app available from  
the App Store and Google Play

# MAYOR'S MESSAGE



## MAYOR'S MESSAGE

I know many of us have felt a bit anxious during this pandemic. So, I'd like to encourage everyone to continue doing the right thing.

Make sure you continue to practise social distancing when out in public, avoid physical contact with others like hand shaking, wash your hands thoroughly and regularly and, most important of all, stay home if you feel unwell. Now is not the time to soldier on and go to work, go shopping or fulfil social commitments if you are experiencing any sort of cold or flu-like symptoms.

We have all worked so hard to help make sure our community remains safe and healthy. Let's not allow this hard work to go to waste by being too complacent.

I'm proud of the way we have come together as a community. The Camden spirit was well and truly alive as we stuck to restrictions, looked out for our neighbours and did everything we could to help stop the spread of COVID-19. Thank you for being so brave.

Camden Council continues to be as focused as ever on supporting our community.

I look forward to continuing to support our residents through the multimillion-dollar third stage of our relief package, which is centred on recovery. Council is in the process of finalising the initiatives that will form part of this.

*Theresa Fedeli*

Mayor of Camden



## MORE SUPPORT COMING YOUR WAY

**We know many members of our community have been facing hardship of all kinds during this uncertain time.**

To help ease the financial burden presented by COVID-19, we're providing our residents with \$4 million worth of rate relief. In the 2020/21 rate notice, Council has:

- Provided a one-off \$100 rates and charges rebate, which has automatically been deducted from your 2020/21 rates;
- Waived the interest due on overdue rate notices for residents experiencing hardship for a period of up to 12 months;
- Removed red tape and requirement for a hardship application;
- Not increased the domestic waste management charges for 2020/21; and
- Added an additional kerbside collection per property, per financial year.

If you are receiving the \$250 pensioner rebate, you have also received the \$100 COVID-19 rate rebate. Both rebates will be automatically deducted.

Rates are absolutely vital in maintaining and providing essential infrastructure and community services. Every dollar collected through your rates is invested back into our growing community, which is why we're asking residents and businesses that can to still pay your rates by the due date.

We do, however, understand this may not be possible for some ratepayers. If you are having difficulties paying your rates, please contact Council to discuss how we can support you.

## HOW TO GET IN TOUCH WITH COUNCIL

If you have a matter you wish to raise with us, please:

- Call our Customer Service Centre on 4654 7777;
- Email us at [mail@camden.nsw.gov.au](mailto:mail@camden.nsw.gov.au);
- Lodge it online at [www.camden.nsw.gov.au/contact-us/report](http://www.camden.nsw.gov.au/contact-us/report); or
- Download the **OurCamden** app.

# SUPPORT DURING COVID-19

## HOW ELSE CAN COUNCIL HELP YOU?

The three-part \$16.8 million support package, includes:



For more information on Council's \$16.8 million support package, visit [www.camden.nsw.gov.au/COVID-19-support-package](http://www.camden.nsw.gov.au/COVID-19-support-package)

## WE'RE NOW TURNING OUR ATTENTION TO RECOVERY

We're finalising a number of initiatives to help boost our economy, improve infrastructure and facilities across the Camden area, help residents and visitors socialise and so much more.

The initiatives will include a range of measures, such as:

- Infrastructure works;
- Overall maintenance and city presentation improvement;
- Events; and
- Programs.

To stay informed as Stage Three takes shape, keep an eye on [www.camden.nsw.gov.au/alerts](http://www.camden.nsw.gov.au/alerts)



# MAJOR PROJECTS



## EXCITING 2020/21 BUDGET

**Council has adopted an exciting investment program that will see the delivery of infrastructure, services, projects and initiatives across the fastest growing local government area in Australia.**

The \$336 million 2020/21 Operational Plan (budget) will also see the delivery of Council's \$16.8 million COVID-19 support package, for residents and local businesses adversely affected by the pandemic.

It will also see the delivery of a \$178 million Capital Works Program, including the continuation of a \$5.1 million Community Infrastructure Renewal Program (CIRP).

Over the next two years, more than \$100 million will be spent on community infrastructure projects. These include:

- Oran Park Leisure Centre – \$57.6 million;
- Narellan Sports Hub Stage Two – \$17.3 million;
- Ferguson Land – Bridge Construction and Cricket Facility – \$8.35 million;
- Design Leppington to Byron Roads (Ingleburn to Bringelly) – \$7.6 million;
- Design Ingleburn Road, Leppington (Rickard Road to Eastwood Road) – \$6.7 million;
- Council Works Depot Redevelopment Stage One and Two – \$4.8 million;
- Herbert Rivulet Drainage Land Purchase – \$4.2 million; and
- Nott Oval Synthetic Football Pitch – \$2.8 million.

**The 2017/18–2020/21 Delivery Program and 2020/21 Operational Plan (Budget) can be viewed at [www.camden.nsw.gov.au](http://www.camden.nsw.gov.au)**

## FUN FACT

You can find out what projects are being delivered in your suburb, by visiting [www.camden.nsw.gov.au/major-developments](http://www.camden.nsw.gov.au/major-developments)

## COMPLETED MAJOR PROJECTS

**Major projects that have been completed during this Delivery Program period include:**

- Oran Park Library – \$13.7 million;
- Julia Reserve Community Centre – \$10.6 million;
- Catherine Park Sporting Fields – \$5.1 million;
- Camden Valley Way/Macarthur Road Intersection Upgrade – \$4.95 million;
- Graham Hill Road/Richardson Road Upgrade – \$3.9 million;
- Camden Town Centre Upgrade Stage Four – \$3.6 million;
- Julia Reserve Skate Park – \$3.5 million;
- Camden Town Centre Upgrade Stage Three – \$3.4 million;
- Spring Farm Community Facility – \$3 million;
- Curry Reserve Water Play Facility – \$2.5 million;
- Catherine Park Community Facility – \$2.2 million;
- Ron's Creek Waterplay, Youth and Passive Space – \$1.54 million (nearing completion).
- Sedgewick Reserve Youth Play Space – \$1.36 million;
- Harrington Park Lake Youth Play Space – \$1.14 million;
- Howard Park – \$1.9 million;
- Kirkham Park Playing Fields – \$1.8 million;
- Kirkham BMX – \$1.7 million; and
- Bandara Circuit Playground – \$1 million.

# MAJOR PROJECTS

## KIRKHAM PARK BMX FACILITY

International BMX riders will soon ride into Camden after Council successfully secured funding of \$2.79 million from the NSW Government's 2019/20 Greater Sydney Sports Facility Fund.

The funding, to be matched by Council, will go towards the construction of Stage Two of the Kirkham Park BMX facility, including:

- An eight-metre start hill for the international level BMX racetrack;
- Off road sprint area;
- Recreational jump park and pump park;
- Shared carparking; and
- Additional landscaping.

Work on stage one of the facility was completed in March this year, including a five-metre start hill, access ramps, a main racetrack, flood lighting, timing and scoring system and landscaping.



## WHERE ARE MY RATES SPENT?



**19%**  
Waste services



**13%**  
Community support, cultural and economic development



**6%**  
Library services



**19%**  
Parks and playgrounds



**12%**  
Local traffic management and road safety



**5%**  
Planning and development



**18%**  
Construction and maintenance of infrastructure



**6%**  
Protection of the natural environment



**2%**  
Emergency services

*(Rates and charges figures for 2020/21 financial year)*

# OUR COMMUNITY

## COUNCIL RECEIVES RFS SUPPORT AWARD

Council has been recognised with a NSW Rural Fire Service (RFS) 2020 Supportive Employer Special Commendation award for its support in releasing volunteers to attend the recent bushfire crisis.

The RFS Supportive Employer Program recognises the vital contribution employers make to the RFS, especially by allowing volunteers to attend incidents and other RFS activities during work hours.

## WATERWAY WALK AT KOLOMBO CREEK

Are you ready to learn more about one of our local waterways? Council has developed a guided Waterway Walk for Kolombo Creek, Oran Park.

The guide provides information about the natural and constructed features that are helping to keep Kolombo Creek clean and healthy. It also allows you to see each feature as you complete the easy 2.4-kilometre walk around the creek. The path is also wheelchair, pram and stroller friendly.

For a copy of the brochure, visit [camden.nsw.gov.au](http://camden.nsw.gov.au) and search 'Waterway Walk'.



## 50 GOOD REASONS TO STICK TO 50KM/H ON LOCAL STREETS

Council is giving motorists 50 good reasons to stick to 50 kilometres per hour on local streets – and the biggest one is road safety. In the Camden area, on average, 26 people are injured in speed-related crashes on local streets every year. Advertising was displayed on buses, waste trucks, social media and information in the mail.

The message is simple – slow down. When turning onto any local urban road without a speed sign, the speed is 50. If you're unsure, keep your speed to 50 just in case. You'll be far better off late than sorry.

For more information about local speed limits, visit [www.rms.nsw.gov.au](http://www.rms.nsw.gov.au)



## CHECK YOUR CHIMNEY

Fireplaces provide warmth and comfort to homes and families, but they can also become a source of unwelcome nuisance in the community. A safety check could save a homeowner from a chimney fire which could cause major damage to their home.

Some easy steps residents can take to start the season include:

- Have the fire box and flue thoroughly cleaned;
- Check for wear and tear and have all repairs attended to by appropriately qualified tradespeople;
- Have a ready supply of good quality dry timber and kindling; and
- Refresh your operator skills. Be sure you know how your wood heating appliance works and operate it at its optimum settings at all times.

For more information on using wood fired heating appliances, go to [www.camden.nsw.gov.au](http://www.camden.nsw.gov.au) and search 'wood smoke reduction program'.

# OUR COMMUNITY



## ELDERLY CONNECT WITH LOCAL CHILDREN

**The MATEY pilot project connects aged care facilities and seniors group residents with local children from pre-schools and childcare centres through craft, stories, pictures, mail and online technology.**

The program had an aim to:

- Reduce social isolation;
- Create connections across generations; and
- Establish ongoing relationships between aged care and seniors' groups and childcare centres into the future.

Eleven childcare centres and 11 seniors' groups from four aged care facilities signed on to take part in the initiative, which included an eight-week program including introducing themselves by drawing a picture through to organising a conversation via Zoom.

## MEN'S HEALTH TO THE FOREFRONT

**Council partnered with the Prostate Cancer Foundation of Australia and Beyond Blue to produce the designs and messages for two new waste trucks to promote the importance of men's health.**

CEO Professor Jeff Dunn AO from the Prostate Cancer Foundation and CEO Georgie Harman from Beyond Blue congratulated the Mayor and Council for their leadership and support.

The two Men's Health wrapped waste trucks are the latest to join Council's fleet, which include messaging supporting Breast Cancer Awareness, Stop Bullying campaign and the Rural Fire Service.

## FUN FACT

You can access thousands of eBooks and eAudiobooks through our Library Services' CloudLibrary app. Details: [library.camden.nsw.gov.au](http://library.camden.nsw.gov.au)

## SCHOOL HOLIDAY FUN

Our libraries, pools and leisure facilities have a range of activities on offer to keep children occupied these school holidays.

**For more information, visit [www.camdenkids.com.au](http://www.camdenkids.com.au)**

# SUSTAINABLE LIVING

## EXTRA COUNCIL KERBSIDE COLLECTION

Residents can declutter their homes more than ever, with Council offering an extra kerbside collection per financial year. The extra service was a part of Council's \$16.8 million COVID-19 package, allowing a total of three kerbside collections for all residential properties per financial year.

Items that residents can include in kerbside collections include:

- Beds and mattresses;
- Garden clippings that are no more than 15 centimetres in diameter (cut into one-metre lengths and tied into bundles);
- Household electrical appliances;
- Metals such as whitegoods, hot water systems, air conditioner units, gym equipment, push bikes and other large metal items;
- Old furniture; and
- Toys.

For more information on Council's waste services, visit [camden.nsw.gov.au/waste-services](http://camden.nsw.gov.au/waste-services)

### FUN FACT

You can find out how to save money and help the environment at the same time, through our new range of EnergyWise online videos. To access the videos visit [www.camden.nsw.gov.au](http://www.camden.nsw.gov.au) and search 'EnergyWise'.



## RECYCLE YOUR GARDEN AND KITCHEN WASTE

Household waste generally consists of a larger amount of food waste thrown out in rubbish bins. Ways to reduce food waste and save money include creating a shopping list and planning weekly meals, using leftovers and reducing portion size when cooking.

Worm farming and composting are great ways to recycle organic waste that residents cannot avoid including banana skins, eggshells and coffee grounds.

Items that can be composted include leaves, twigs, small branches, straw, sawdust, pine needles, shredded paper, grass clippings, fruit and vegie scraps, cut flowers, tea bags, coffee grounds and eggshells.

For more information on composting and worm farming, go to [www.camden.nsw.gov.au](http://www.camden.nsw.gov.au)

## STORMWATER POLLUTION

Many people don't realise that stormwater drains directly to our beautiful local waterways, and eventually enters the ocean. It's important to keep fertilisers, pesticides, soil, clippings and leaf litter away from stormwater drains to not only keep our waterways healthy but also looking great.

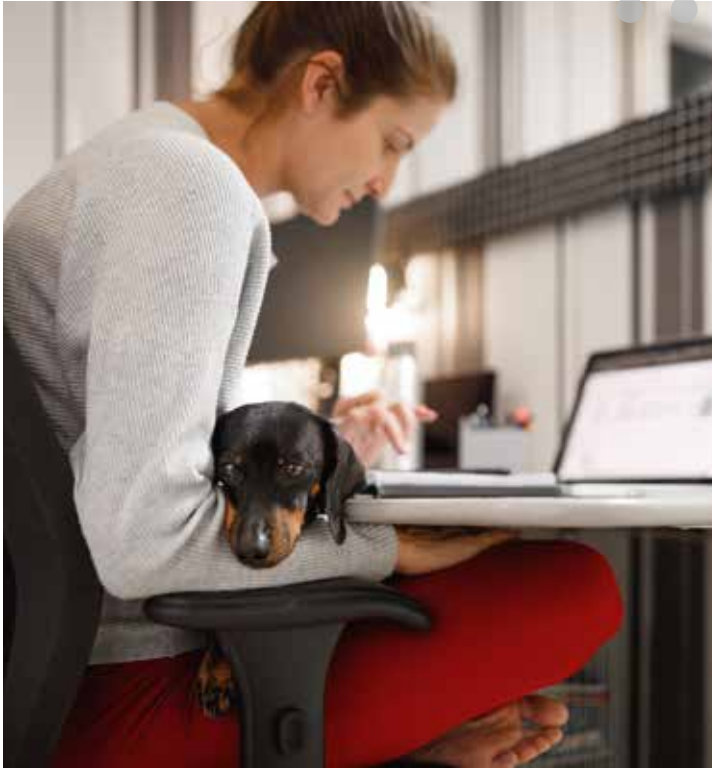
What can you do:

- Place garden waste into your green waste bin, or better yet, in your compost, and don't sweep or store clippings, leaves and branches where they can wash into drains and gutters;
- Wash your car on the lawn or at a carwash to prevent detergents, grease and grime ending up in our waterways;
- Litter not only looks unsightly – it can also be a big hazard to our wildlife. Litter can be washed or blown into our waterways so it's important to always put any litter safely in the bin;
- To help prevent wildlife entanglement remember to cut any plastic rings and hair ties before you put them in the bin; and
- Dog droppings are a big contributor to poor water quality in the local area. Always clean up after your dog and place any waste directly in the bin.





# ANIMALS AND PETS



## ANNUAL PERMITS FOR NON-DESEXED CATS AND DANGEROUS DOGS

Residents with restricted dog breeds, dogs declared as dangerous and non-desexed cats will need to purchase annual permits from Wednesday 1 July.

The annual permits were announced by the NSW Government in July last year. However, a 12-month grace period gave affected pet owners time to prepare for their introduction.

Pet owners will be able to pay for annual permits using the NSW Pet Registry website or by calling Council's Customer Service team on 4654 7777.

For more information on the annual permits, visit [www.olg.nsw.gov.au](http://www.olg.nsw.gov.au)



## HOW TO HELP PETS RE-ADJUST, AS WE DO

**Have you been able to spend more time with your furry friends whilst isolating at home? Your pets take time to re-adjust to the easing of restrictions, just as we do.**

As people start returning to work, school and other activities, our pets start to spend more time at home by themselves. Although we get to engage and interact with others, they can often feel lonely due to the lack of company and attention, leading them to suffer from separation-related distress.

Behaviours in both cats and dogs can change, with some common reactions being:

- Dogs barking;
- Destructive behaviours such as digging, chewing and escaping;
- Cats pacing or crying;
- Inappropriate use of locations for toilet purposes; and
- Sleeping more to avoid stress.

Animal behaviourist, Dr Jo Righetti, has provided these tips for pet owners to help their pets adjust to the everchanging conditions:

- Helping them get used to being alone;
- Giving them activities to occupy them; and
- Keeping them calm.

"By spending time apart from our pets, we can teach them that being alone is a positive event," Dr Righetti said.

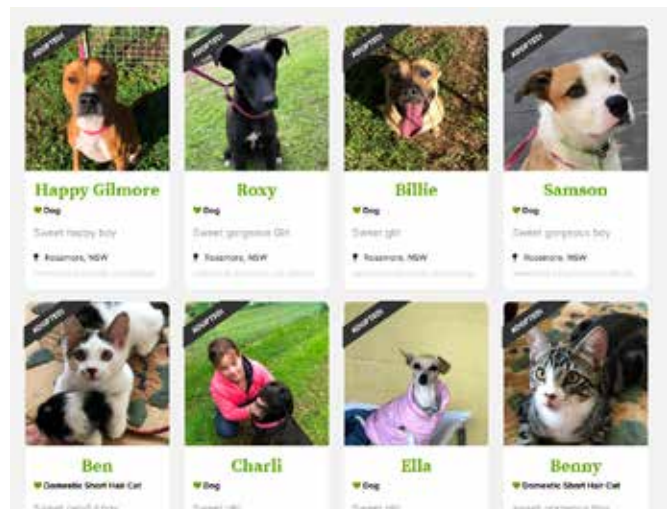
"Try not to fuss over your pet too much on your departures and arrivals.

"When your pet is alone, give them a favourite toy... this helps make home alone time a more pleasant experience."

## ADOPT A PET

If you're looking for a new pet to join your family, we encourage you to check out those available at our animal care facility (behind Rossmore Veterinary Hospital).

For more information, visit [www.camden.nsw.gov.au/pets/adopt-a-pet](http://www.camden.nsw.gov.au/pets/adopt-a-pet)



# LOCAL BUSINESS

## LOCAL BUSINESS SUPPORT EXPANDING

**Local businesses and suppliers will receive preference under Council's revised purchasing and procurement policy.**

The introduction of both the Local Supplier Marketplace in Vendor Panel and a local supplier initiative in Council's Purchasing and Procurement Policy serves to support local business during and after the current economic climate created by COVID-19.

The policy includes:

- Vendor Panel (Local Supplier Marketplace) and Request for Quotes – a system capable of geo-locating local suppliers and their service/product categories;
- Tenders and Local Preference initiatives – providing preference to local suppliers by including a weighting benefit towards suppliers within the Camden LGA. The weighting would be included as part of the assessment criteria for all tenders and request for quotes over \$100,000; and
- Small Business Friendly Program (On Time Payment Policy) – applies to businesses with a turnover of less than \$2 million. The business must be registered as a small business with Council, with the payment of invoices for small business within 20 days.

**For more information on tenders, visit Council's website.**

## #CAMDENBOUGHT

Residents are being encouraged to support local businesses by joining a new social media campaign, championed by Camden Council and Camden Region Economic Taskforce (CRET).

The #camdenbought campaign asks residents to take photos of the products they have purchased from local businesses and post them on social media. Local businesses also have a new platform to promote their business and offers during the COVID-19 pandemic on the Council website.

**Businesses can list their offers on the newly designed directory page on Council's website by filling out the form at [www.camden.nsw.gov.au/business](http://www.camden.nsw.gov.au/business)**



## FUN FACT

Small Business Month is coming in October! To receive updates about the program, and other business news, email [business@camden.nsw.gov.au](mailto:business@camden.nsw.gov.au) to be added to our mailing list.

## FREE COVID-19 AWARENESS FOOD SERVICE TRAINING

**Local food premises were able to receive support with a free COVID-19 awareness for food service online training course.**

The NSW Food Authority partnered with NSW Health to provide the free training to assist businesses in providing a COVID safe environment as restrictions continue to be eased across the state.

The training was developed for anyone working in NSW food retail and food service businesses and covers key measures recommended for COVID-19 control, including:

- COVID-19 introduction and background;
- Infection, signs and symptoms;
- Self-protective measures;
- Protective measures for premises and personal hygiene;
- Cleaning and sanitation practices;
- Social distancing measures; and
- Record keeping.

**For more information on the free online course, go to [foodauthority.nsw.gov.au/covid-19-awareness-food-service-training](http://foodauthority.nsw.gov.au/covid-19-awareness-food-service-training)**

# WHAT'S ON

## MACARTHUR NATURE PHOTOGRAPHY COMPETITION

**The annual Macarthur Nature Photography Competition is back! The competition is a great way to look at the local environment in a new way and appreciate and understand the natural world that surrounds us.**

Enter your photographs into one of the competition themes, including native flora, native fauna, waterways, landscapes of Macarthur and backyard biodiversity.

A range of great prizes are up for grabs and cover all age groups, including primary school aged kids, high school aged kids as well as adults.

The competition opens on 21 September and all entries need to be submitted by 23 October.

**For more information, visit [www.camden.nsw.gov.au](http://www.camden.nsw.gov.au) or call the Sustainability Team on 4654 7777.**



## SOME EVENTS AND ACTIVITIES POSTPONED

As a precautionary measure for the safety of our residents, visitors and staff, Council has postponed some of its community events and library programs.

**Head to [www.camden.nsw.gov.au/what's-on](http://www.camden.nsw.gov.au/what's-on) for the latest information.**

## COVID SAFE EVENTS

**As restrictions ease, allowing for public gatherings to take place, event organisers will need to consistently monitor changes, and follow regulations and advice provided by the Department of Health and NSW Government.**

Event organisers are responsible for ensuring their event is run in accordance with the COVID-19 restrictions and guidelines for gatherings. All applicants will be required to submit a COVID-19 Safety Plan with their application and will be responsible for managing and monitoring compliance with any current COVID-19 restrictions.

**For more information, visit [www.camden.nsw.gov.au/what's-on](http://www.camden.nsw.gov.au/what's-on)**

## CORRECTLY FITTED CHILD SEATS SAVE LIVES

**We run four free Child Restraint Fitting and Checking Days per year, where you can have your child car restraints, harnesses and booster seats checked for safety and correct fit.**

The next event is tentatively scheduled for Thursday 10 September 2020 (dependant on current restrictions). Bookings are essential and open to Camden LGA residents only. **To book, call Council on 4654 7777.**

Drivers with children, who are not safely fastened in the correct child car seat, may face a \$337 fine and loss of three demerit points.

## LEARNER DRIVER LOGBOOK RUN

A Learner Drive Logbook Run event is tentatively scheduled for Sunday 6 September 2020 (dependant on current restrictions).

**For more information, or to book, call Council on 4654 7777.**



## GARDEN COMPETITION

**Have you had a little extra time on your hands during isolation to get your garden up and running? We want to see how our Camden residents have potted their plants and flourished their flowers.**

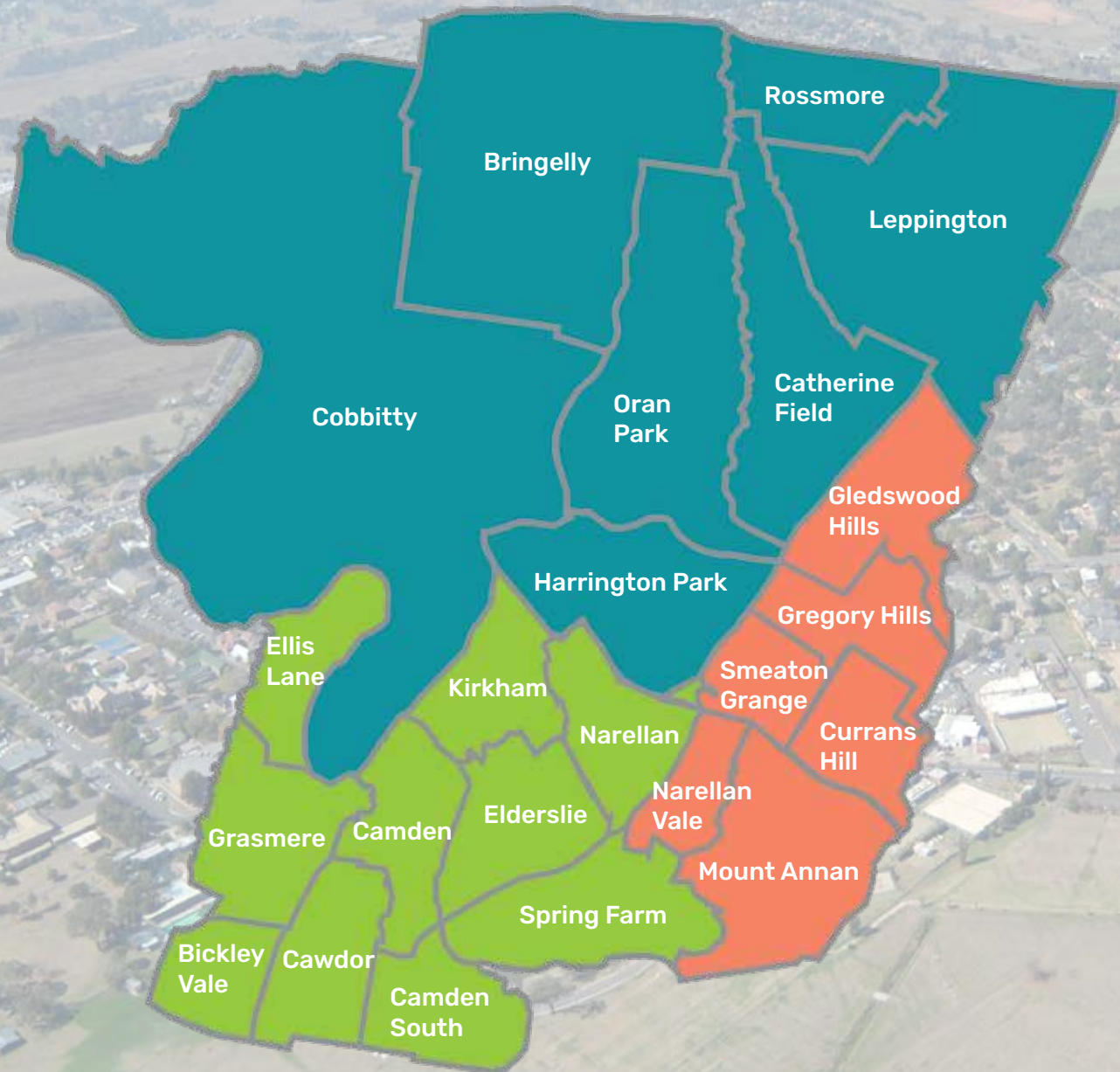
The Garden Competition is an annual event that allows residents, businesses and schools of the Camden LGA to enter their gardens to be judged. Proud gardeners and passionate green thumbs can enter a wide range of categories.

**To enter, visit [www.camden.nsw.gov.au](http://www.camden.nsw.gov.au) and search 'Garden Competition'.**

# CAMDEN COUNCIL

## CONTACT YOUR COUNCIL

For more information about Camden Council's services, visit Council's customer service desk at the administration building, Oran Park 8.30am - 5pm, Monday to Friday. You can also phone on 4654 7777 or visit [camden.nsw.gov.au](http://camden.nsw.gov.au)



## COUNCILLORS

### CENTRAL WARD



Mayor  
Theresa Fedeli  
0419 180 183  
[cr.fedeli@camden.nsw.gov.au](mailto:cr.fedeli@camden.nsw.gov.au)



Deputy Mayor  
Rob Mills  
0428 721 321  
[cr.mills@camden.nsw.gov.au](mailto:cr.mills@camden.nsw.gov.au)



Councillor  
Ashleigh Cagney  
0427 406 434  
[cr.acagney@camden.nsw.gov.au](mailto:cr.acagney@camden.nsw.gov.au)

### SOUTH WARD



Councillor  
Peter Sidgreaves  
0417 449 929  
[cr.sidgreaves@camden.nsw.gov.au](mailto:cr.sidgreaves@camden.nsw.gov.au)



Councillor  
Paul Farrow  
0419 754 192  
[cr.farrow@camden.nsw.gov.au](mailto:cr.farrow@camden.nsw.gov.au)



Councillor  
Eva Campbell  
0419 638 733  
[cr.campbell@camden.nsw.gov.au](mailto:cr.campbell@camden.nsw.gov.au)

### NORTH WARD



Councillor  
Lara Symkowiak  
0413 485 142  
[larasym@gmail.com](mailto:larasym@gmail.com)



Councillor  
Cindy Cagney  
0428 680 840  
[cr.ccagney@camden.nsw.gov.au](mailto:cr.ccagney@camden.nsw.gov.au)



Councillor  
Michael Morrison  
0419 147 810  
[cr.morrison@camden.nsw.gov.au](mailto:cr.morrison@camden.nsw.gov.au)