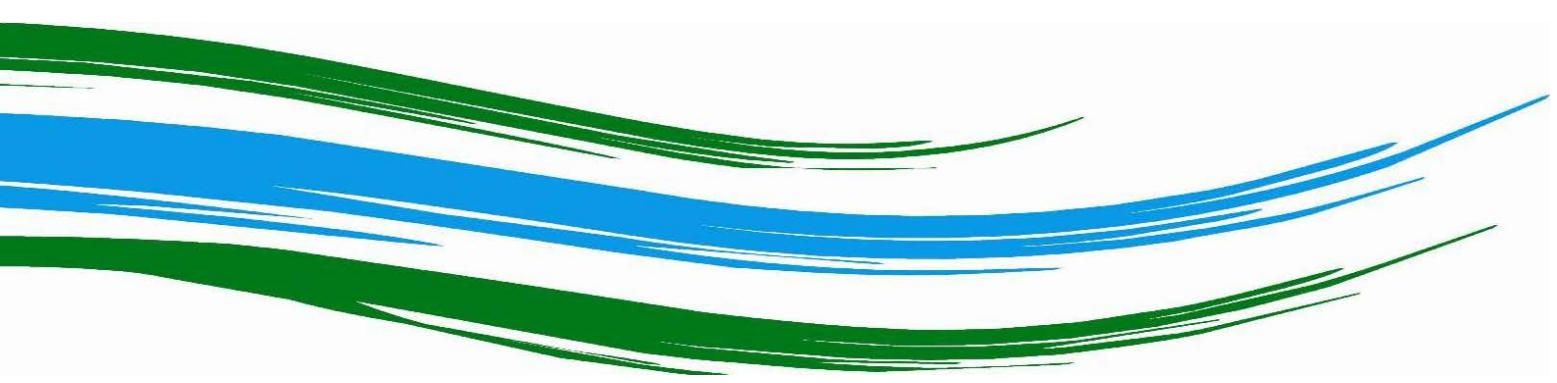




Local Traffic Committee Business Paper

Committee Meeting
15 November 2016

Council Office
70 Central Avenue
Oran Park



LOCAL TRAFFIC COMMITTEE
15 November 2016

Dear Sir/Madam

You are advised that the next Local Traffic Committee is scheduled for 15 November 2016, commencing at 9.30am at Council Office, 70 Central Avenue, Oran Park.

Local Traffic Committee members are issued with a full set of business papers of proposed items with supportive information where required. Site inspections are recommended to help minimise the Committee's business and improve member's understanding of the issues reported in this Agenda.

Should you require and further information prior to the meeting please contact Council's Traffic Engineer Mr Sophak Eng (4645 5026).

Your sincerely

VINCE CAPALDI
DIRECTOR COMMUNITY INFRASTRUCTURE

Local Traffic Committee

Background

The Roads and Maritime Services (RMS) is legislated as the Authority responsible for the control of traffic on all NSW Roads. In order to deal with the large number and range of traffic related matters, RMS has delegated certain aspects of the control of traffic on local roads to Council (under the Transport Administration Act 1988). To exercise this delegation, Councils must establish a Local Traffic Committee (LTC) and obtain the advice of the RMS and NSW Police.

Role of the Committee

The LTC is primarily a technical review and advisory committee which considers the technical merits of proposals and ensures that current technical guidelines are considered. It provides recommendations to Council on traffic and parking control matters and the provision of traffic control facilities and prescribed traffic control devices for which Council has delegated authority. The Committee also advises on traffic matters arising from development applications (regulatory signage and line marking only), special events and road safety issues.

Committee Delegations

The LTC has no decision-making powers. Council must refer all traffic related matters to the Local Traffic Committee prior to exercising its delegated functions. Matters related to State Roads or functions that have not been delegated to Council must be referred directly to the RMS or relevant organisation.

The Committee provides recommendations to Council. Council is not bound by the advice of its LTC. Council can choose not to proceed with a recommendation of the Local Traffic Committee by not endorsing it at a Council Meeting where the minutes are presented.

Should Council wish to act contrary to the advice of the Committee or if that advice is not supported unanimously by the Committee members, Council must write to both the RMS and NSW Police, who may then choose to appeal to the Regional Traffic Committee within 14 days.

Committee Membership

The LTC is made up of four formal voting members. The members are as follows:

- one representative of Council as nominated by Council;
- one representative of the NSW Police from each Local Area Command (LAC) within the LGA;
- one representative from the RMS; and
- the local State Member(s) of Parliament (MP) or their nominee.

Where the Council area is represented by more than one MP or covered by more than one Police LAC, representatives are only permitted to vote on matters within their electorate or LAC.

The role of the four voting members is to:

- review the information provided to the committee.
- advise whether or not the technical justification of facilities meet the relevant guidelines and standards (facilities include lines, signs and devices).
- ensure that the recommendations conform to the matters being referred to and should be recommended for Council to endorse.

In relation to this:

- I. The council representatives and Local Members of Parliament (or representative) typically consider the interests of Council and its constituents. Both representatives on the Committee provide valued local knowledge.
- II. The Road and Maritime Services (RMS) representative provides advice on compliance of the matters with regards to various standards and guidelines.
- III. The NSW Police representative provides input on implications for the road network, particularly where a proposal may affect road safety.

The Committee may also have additional informal (non-voting) advisors. These may include:

- Council Officers
- Chamber of Commerce representatives
- Bus Operator representatives
- Other representatives as determined from time to time.

The informal advisors are not required to attend every LTC meeting. Their attendance is only necessary when items appear on the Agenda which affect their area of expertise or responsibility. The informal advisors are not entitled to a vote.

Please note there is no public gallery for these meetings.

LTC Business Paper

Council is responsible for preparing an LTC agenda and circulates to all formal members and informal advisors of the committee approximately one week prior to the meeting. This will allow members to fully consider the issues and determine their response on each item.

Council encourages each member of the LTC to undertake a site visit prior to considering any proposal. Site visits may be undertaken individually or organised with Council's Traffic Engineer(s).

COMMON ABBREVIATIONS

| | |
|----------|---|
| BCA | Building Code of Australia |
| CC | Construction Certificate |
| CLEP | Camden Local Environmental Plan |
| CP | Contributions Plan |
| CRSO | Community Road Safety Officer |
| DA | Development Application |
| DCP | Development Control Plan |
| DDCP | Draft Development Control Plan |
| DPI | Department of Planning & Infrastructure |
| DoT | NSW Department of Transport |
| EEP | Enhanced Enforcement Programs |
| EIA | Environmental Impact Assessment |
| EIS | Environmental Impact Statement |
| EP&A Act | Environmental Planning & Assessment Act |
| GLS | Graduated Licensing Scheme |
| LEP | Local Environmental Plan |
| LAP | Local Approvals Policy |
| LBR | Log Book Run |
| LGA | Local Government Area |
| LTC | Local Traffic Committee |
| MACROC | Macarthur Regional Organisation of Councils |
| MYDAP | Macarthur Young Drivers Assistance Program |
| PAMP | Pedestrian Access and Mobility Plan |
| REP | Regional Environmental Plan |
| RMS | Roads & Maritime Services (incorporating former Roads & Traffic Authority) |
| RTA | Roads and Traffic Authority of NSW (now part of RMS) |
| RTC | Regional Traffic Committee |
| SEPP | State Environmental Planning Policy |
| SETMP | Special Event Transport Management Plan |
| SRA | State Rail Authority "Rail Corp" |
| SREP | Sydney Regional Environmental Plan |
| SSP | School Safety Program |
| TCP | Traffic Control Plan |
| TIA | Traffic Impact Assessment |
| TMP | Traffic Management Plan |
| TfNSW | Transport for New South Wales, also commonly referred to as the NSW Department of Transport |
| WSROC | Western Sydney Regional Organisation of Councils |



LOCAL TRAFFIC COMMITTEE

ORDER OF BUSINESS - LOCAL TRAFFIC COMMITTEE

Present
Apologies

Confirm and adopt Minutes of the Local Traffic Committee Meeting held 18 October 2016.

Local Traffic Committee Tuesday 15 November 2016

LTC01 Business Arising From The Committee's Last Report 5

MATTERS OUTSTANDING

LTC02 Status Of Local Traffic Committee Recommendations And Actions 6

SIGNS, LINES & DEVICES

LTC03 Elizabeth Street, Camden - Roundabout At The Intersection With Mitchell Street..... 7

LTC04 Telopea Circuit, Mount Annan - No Stopping Restrictions..... 10

LTC05 Edward Street, Camden - 15 Minute Timed Parking Restrictions At Macarthur Disability Services Centre 12

LTC06 Camden Valley Way, Elderslie - Traffic Signals At The Macarthur Road Intersection 16

LTC07 Patherton Place And Stuckey Place, Narellan Vale - Give Way And Centreline Treatments 20

LTC08 Camden Acres Drive, Elderslie - Give Way And Centrelines At Intersection With Lodges Road..... 25

LTC09 Seton Street, Oran Park - Give Way Treatment 28

LTC10 Oran Park Drive And Peter Brock Drive, Oran Park - Additional Bus Stops 31

LTC11 Bourne Ridge, Oran Park - Give Way Treatments 35

PERMANENT ITEMS

LTC12 Permanent Items 38

ELECTRONIC MEETING ITEMS

LTC13 Firth Avenue, Oran Park - Signage, Linemarking And Devices 40

LTC14 Camden Valley Way, Catherine Field - Signage, Linemarking And Devices Associated With Subdivision Of Nos. 719, 721, 729 And 735..... 44

LTC15 Longview Road, Gledswood Hills - The Hermitage Stage 24B Subdivision - Signage, Linemarking And Devices 49



| | | |
|-------|---|----|
| LTC16 | Longview Road, Gledswood Hills - The Hermitage Stage 11 Subdivision Signage, Linemarking And Devices | 53 |
| LTC17 | Emerald Hills Drive, Leppington - Emerald Hills Estate Signage Linemarking And Devices | 58 |
| LTC18 | Peter Brock Drive, Oran Park - Signage, Linemarking And Devices Between Oran Park Drive And South Circuit (East) | 63 |
| LTC19 | Oran Park South Development Tranche 31 Stage 2 - Signage, Linemarking And Devices | 72 |
| LTC20 | Crest Way, Beattie Street And Kerillian Street, Gledswood Hills - Signage, Linemarking And Devices | 76 |
| LTC21 | Pioneer Street, Gregory Hills - No Stopping Restrictions | 80 |
| LTC22 | Rochford Road, Gledswood Hills - Signage, Linemarking And Devices | 84 |
| LTC23 | Australian Red Cross Blood Service Donormobile Vehicle - Temporary Suspension Of Parking Bays In 2017 | 88 |
| LTC24 | White Ribbon Day Community Breakfast - Temporary Suspension Of Parking Bays On Oxley Street | 91 |
| LTC25 | Turner Road, Currans Hill - No Stopping Restrictions Associated With The Development Of Lot 105 Turner Road | 94 |

BUSINESS WITHOUT NOTICE

**DATE OF NEXT LOCAL TRAFFIC COMMITTEE MEETING - TUESDAY 20
DECEMBER 2016**

INFORMAL ITEMS



LOCAL TRAFFIC COMMITTEE

LTC01

SUBJECT: BUSINESS ARISING FROM THE COMMITTEE'S LAST REPORT
FROM: Traffic Engineer
TRIM #: 16/310895

The Local Traffic Committee report dated 18 October 2016 was presented to the Council meeting on 8 November 2016. Council adopted the Local Traffic Committee's recommendations without amendment.

RECOMMENDED

That the recommendations of the Committee's report dated 18 October 2016 be adopted.

LTC01



LOCAL TRAFFIC COMMITTEE

LTC02

SUBJECT: STATUS OF LOCAL TRAFFIC COMMITTEE RECOMMENDATIONS AND ACTIONS

FROM: Team Leader Infrastructure Planning

TRIM #: 16/310901

Work instructions are being prepared for recommendations of the Local Traffic Committee from the meeting on 18 October 2016, as follows:

- Holdsworth Drive, Narellan Vale – No Stopping restrictions;
- Queen Street, Narellan – Bus Zone and No Stopping restrictions;
- Elyard Street and Queen Street, Narellan – Two hour parking, Loading Zone, and No Parking Restrictions;
- Mount Annan Drive, Mount Annan – Edgelines;
- Dairy Street and Central Avenue, Oran Park – Time restricted parking;
- Swansona Avenue, Mount Annan – Centrelines;
- Cameron Circuit, Harrington Park – No Stopping Restrictions and centerlines; and
- Donovan Boulevard, Gregory Hills – Bus Stops.

Bus Zones have been installed on South Circuit, Oran Park. Timed parking on John Street, Camden, is subject to Council progressing with construction of a decked car park in Oxley Street.

RECOMMENDED

That the status report on outstanding Local Traffic Committee recommendations and actions be noted.

LOCAL TRAFFIC COMMITTEE

LTC03

SUBJECT: ELIZABETH STREET, CAMDEN - ROUNDABOUT AT THE INTERSECTION WITH MITCHELL STREET

FROM: Team Leader Infrastructure Planning

TRIM #: 15/348356

PURPOSE OF REPORT

To seek Local Traffic Committee concurrence for regulatory signage and line marking associated with the construction of a roundabout at the Mitchell Street/Elizabeth Street intersection, Camden.

BACKGROUND

Council has accepted grant funding from the Infrastructure Investment Black Spot Programme to develop a roundabout in Elizabeth Street to address crash patterns. Signs, lines and devices associated with this facility is the subject of this report.

MAIN REPORT

Council has accepted grant funding from the Federal Government's Infrastructure Investment Black Spot Programme to install a roundabout at the intersection of Elizabeth Street and Mitchell Street, Camden, to address specific crash patterns.

Public consultation on this facility was undertaken in April 2016 with 212 property owners and 283 Occupiers. 4 responses were received with no objections. However one respondent did not believe there was a need for a roundabout at this location.

Signage, linemarking and devices are identified on the Drawing Number 110177/CC410 (see **Attachment 1**) prepared by J Wyndam Prince on behalf of Council.

FINANCIAL IMPLICATIONS

The design and construction of this project is fully funded by the Infrastructure Investment Black Spot Programme which has granted an extension for completion by the end of December 2016.

CONCLUSION

A roundabout has been designed at the intersection of Elizabeth Street and Mitchell Street, Camden, to address the crash history at this location. Appropriate signage and linemarking has been incorporated into the design and it is recommended that the Committee supports these treatments.



RECOMMENDED

The Local Traffic Committee recommends that Council in Elizabeth Street, Camden, supports the signage, linemarking and devices associated with the design of a roundabout at the intersection with Mitchell Street, as detailed in Drawing Number 110177/CC410.

ATTACHMENTS

1. Engineering Drawing - Elizabeth Street, Camden - Roundabout at the Intersection with Mitchell Street



LOCAL TRAFFIC COMMITTEE

LTC04

SUBJECT: TELOPEA CIRCUIT, MOUNT ANNAN - NO STOPPING RESTRICTIONS
FROM: Manager Infrastructure Planning
TRIM #: 16/309407

PURPOSE OF REPORT

To seek Local Traffic Committee concurrence for the installation of No Stopping restrictions in Telopea Circuit, Mount Annan, on the boundary with Telopea Reserve.

BACKGROUND

Changes are proposed to parking controls in Telopea Circuit, Mount Annan, in order to enhance maneuverability of vehicles and cater for emergency access.

MAIN REPORT

The section of Telopea Circuit adjacent to Telopea Reserve measures 5.4m in width, which makes it difficult for vehicles to maneuver into and out of driveways when vehicles are parked opposite. In response to concerns raised by the community, restricting parking along the roadway adjacent to the boundary of Telopea Reserve would cater for enhanced access to and from driveways, improved traffic flow and cater for emergency access to the reserve.

Consultation has been undertaken with affected owners and occupiers. Four responses were received with three supporting the proposal and one response against the proposal.

FINANCIAL AND ASSET MANAGEMENT IMPLICATIONS

It is proposed that the cost be funded from the RMS Block Grant (Traffic Facilities Component) for the 2016/17 financial year.

CONCLUSION

It is considered that the No Stopping restrictions would cater for emergency access to the Reserve and would enhance traffic flow and access to and from driveways.

RECOMMENDED

The Local Traffic Committee recommends that Council in Telopea Circuit, Mount Annan, adjacent to Telopea Reserve, approves the installation of 110 metres of No Stopping restrictions (R5-400 signage).

ATTACHMENTS

1. Telopea Circuit, Mount Annan - No Stopping Restrictions



Scale: 1:1000
 Printed Date: 10.08.16

Teloepa Circuit, Mount Annan - Parking Restrictions



This map has been prepared from Council records by the Land Information section. If you intend to rely on this information you should have this verified.
 Camden Council accepts no responsibility for any errors or omissions. This map should not be reproduced without the permission of Camden Council.



LOCAL TRAFFIC COMMITTEE

LTC05

SUBJECT: EDWARD STREET, CAMDEN - 15 MINUTE TIMED PARKING RESTRICTIONS AT MACARTHUR DISABILITY SERVICES CENTRE

FROM: Manager Infrastructure Planning

TRIM #: 16/16338

PURPOSE OF REPORT

To seek Local Traffic Committee concurrence for the installation of timed parking restrictions in Edward Street, Camden.

BACKGROUND

Following a request from Macarthur Disability Services (MDS) for a provision of a drop off and pick up facility outside the MDS Centre in Edward Street, it is proposed that a 15 minute parking zone be installed to address this issue.

MAIN REPORT

Council has been liaising with the MDS in Camden for a provision of a drop off and pick up facility for MDS's customer transportation van on Edward Street, outside the MDS Centre. It was advised that vehicles are often parked outside the MDS Centre, making it difficult for the transportation van to drop off or pick up people from the centre. Due to the needs of the MDS clients, it is less practical to drop off or pick them up further from the centre (**Attachment 1** shows a locality map).

Council undertook consultation with local owners and occupiers proposing a parking bay for people with disabilities. However, the feedback received was that this would be less effective at encouraging a turnover of users of the facility.

Council therefore undertook a second consultation, proposing to install 15 minute parking restrictions (R5-15 signage) (Mon-Fri 8am - 6.30pm & Sat 8am - 12.30pm) directly outside the Macarthur Disability Services (MDS) Centre on Edward Street. Although it has been reported that drop off and pick up mainly occurs at the start and end of the working day, it also occurs throughout the day.

The MDS and local businesses in the vicinity of the proposal were invited to provide feedback and no responses were received.

FINANCIAL AND ASSET MANAGEMENT IMPLICATIONS

The estimated cost of the recommended work is \$1,500. It is proposed that the cost be funded from the RMS Block Grant (Traffic Facilities Component) for the 2016/17 financial year. Long term maintenance of the sign posting will be funded through the RMS Block Grant.

CONCLUSION

Concerns have been raised about drop off and pick up arrangements at the Macarthur Disability Services (MDS) Centre in Edward Street, Camden, and it is recommended

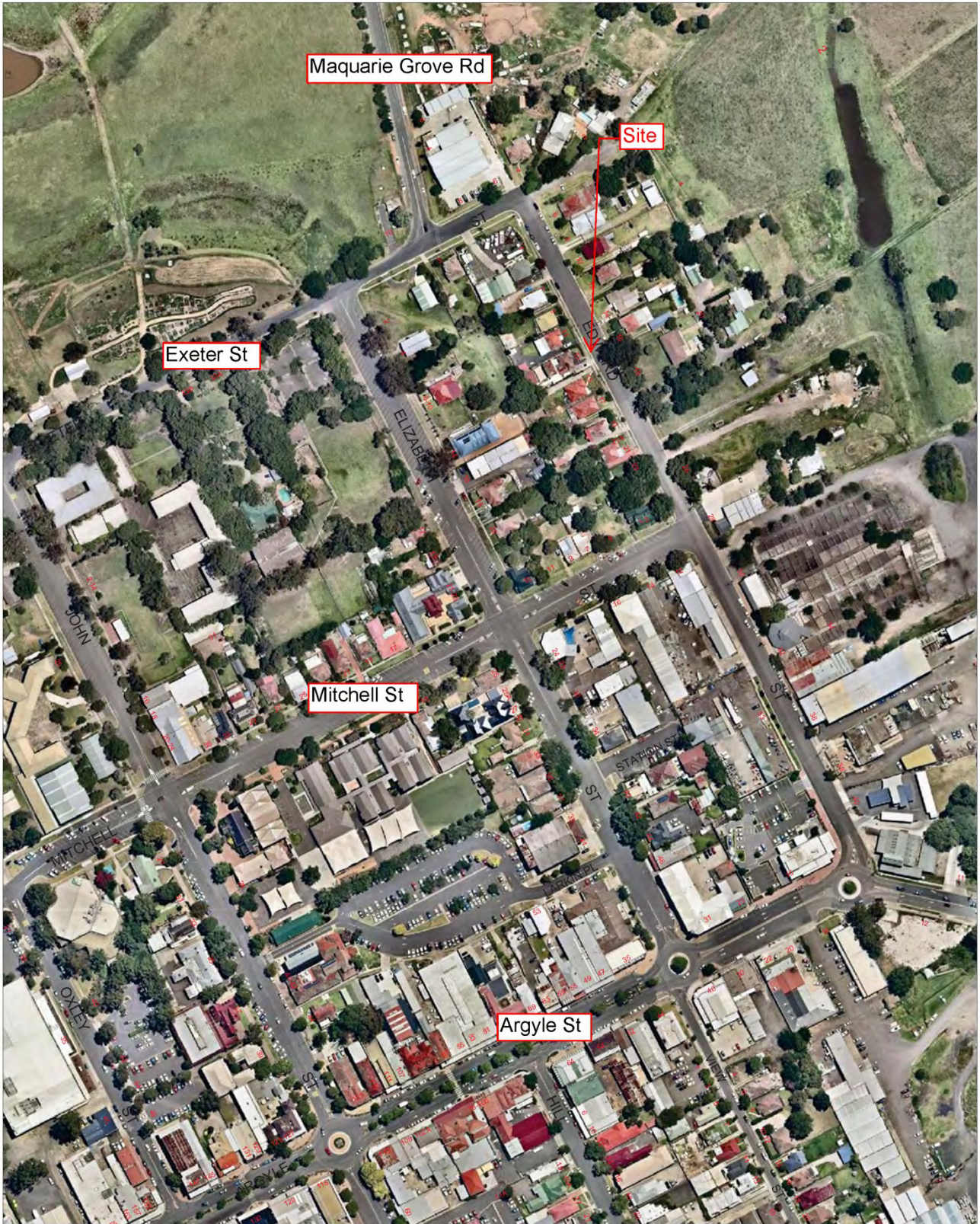
that the Committee supports the implementation of 15 minute timed parking restrictions throughout the day in front of the MDS property, to encourage turnover of usage.

RECOMMENDED

The Local Traffic Committee recommends that Council approves 15 minute parking restrictions (Mon-Fri 8am - 6.30pm & Sat 8am - 12.30pm) (R5-15 signage), in Edward Street, Camden, outside the Macarthur Disability Services Centre.

ATTACHMENTS

1. Locality Plan - Edward Street, Camden - 15 Minute Timed Parking Restrictions at Macarthur Disability Services Centre
2. Edward Street, Camden - 15 Minute Timed Parking Restrictions at Macarthur Disability Services Centre

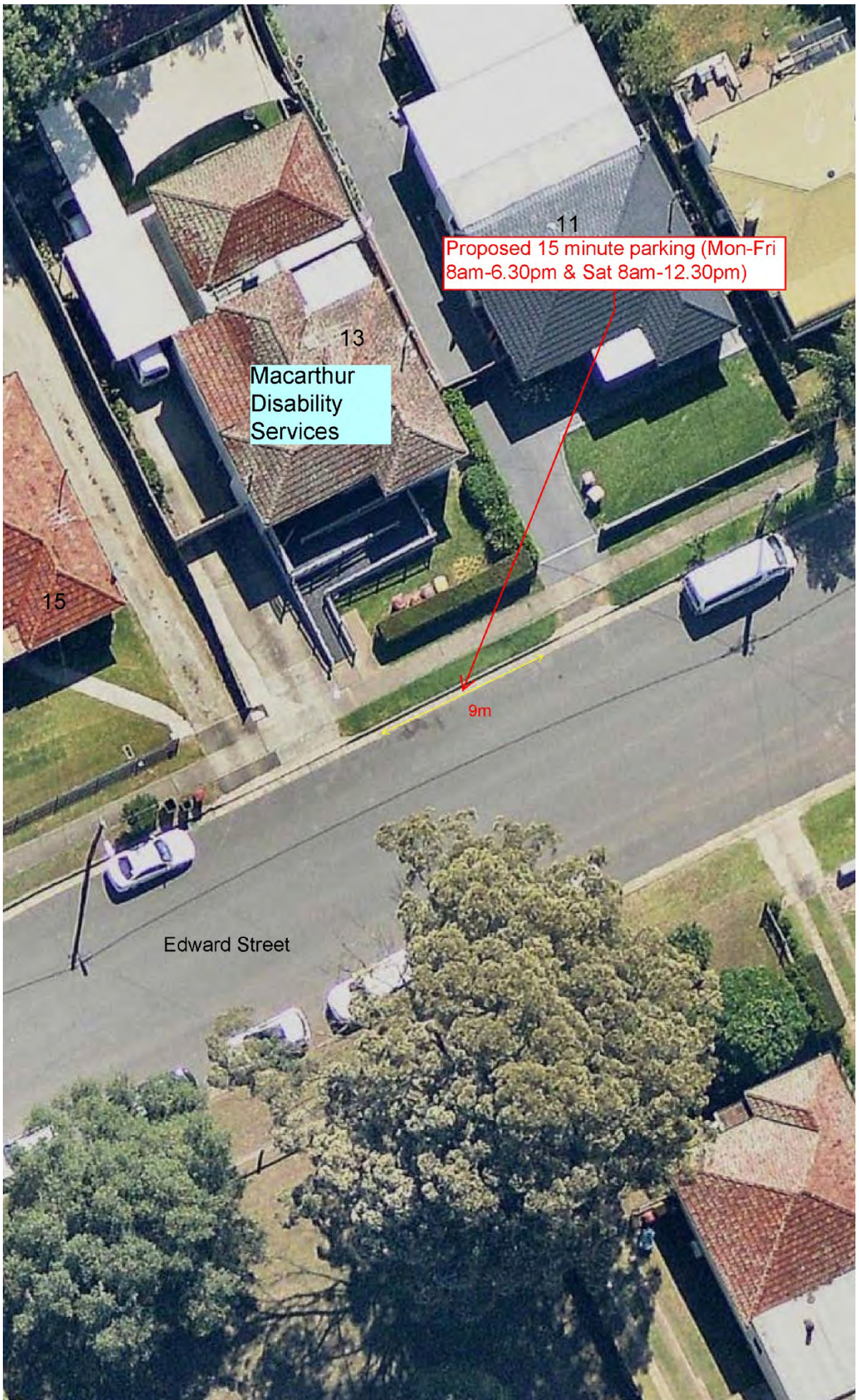


Scale 1:3000
Printed Date: 03:11:16



This map has been prepared from Council records by the Land Information section. If you intend to rely on this information you should have this verified.

Camden Council accepts no responsibility for any errors or omissions. This map should not be reproduced without the permission of Camden Council.





LOCAL TRAFFIC COMMITTEE

LTC06

**SUBJECT: CAMDEN VALLEY WAY, ELDERSLIE - TRAFFIC SIGNALS AT THE
MACARTHUR ROAD INTERSECTION**

FROM: Team Leader Infrastructure Planning

TRIM #: 15/354050

PURPOSE OF REPORT

To seek Local Traffic Committee concurrence for the installation of signage, line marking and devices associated with new traffic signals at the intersection of Camden Valley Way and Macarthur Road, Elderslie.

BACKGROUND

Council is undertaking an upgrade of the intersection of Camden Valley Way and Macarthur Road incorporating traffic signals. The purpose of this report is to seek concurrence from the Local Traffic Committee for the installation of signage, line marking and devices associated with these works.

MAIN REPORT

The Camden to Narellan Corridor Upgrade is made up of a number of separate projects between Camden and Narellan, designed to improve road network operation, journey times, safety and travel reliability for residents, employees and visitors in the area.

Recent studies have indicated that the intersection of Camden Valley Way, Macarthur Road and Argyle Street in Elderslie requires traffic lights to manage existing and future traffic. On behalf of Camden Council, J Wyndham Prince has undertaken a detailed design of traffic signals at the intersection, incorporating:

- realignment of the northern end of Macarthur Road;
- two through lanes with one lane merging in each direction left and right turning lanes on Camden Valley Way, with lane linemarking;
- concrete median islands with Keep Left (R2-3) signage;
- a refuge island crossing with kerb extensions further to the south on Macarthur Road, with Keep Left (R2-3) signs and hazard markers (D4-1-2);
- kerbside parking restrictions (R5-400 signage); and
- shared path signage (R8-2) and linemarking.

The traffic signal plan has been submitted by Roads and Maritime Services Traffic Signals Unit and the feedback received has been addressed in the design process. The layout of the signals themselves is subject to final approval by the Traffic Signals Unit.

Signage and linemarking plans (Plan Numbers 9910-RF-002 Issue E and 9910-RF-003 Issue E) have been prepared by J. Wyndham Prince as detailed in **Attachment 1**.

Community notification was undertaken in early 2016.

FINANCIAL AND ASSET MANAGEMENT IMPLICATIONS

The intersection upgrade is being funded through an award from the Western Sydney Infrastructure Plan Local Roads Package accepted by Council on 22 March 2016. Council is also making a funding contribution from the Section 94 Contribution Plan as already identified in the 2015/16 budget.

CONCLUSION

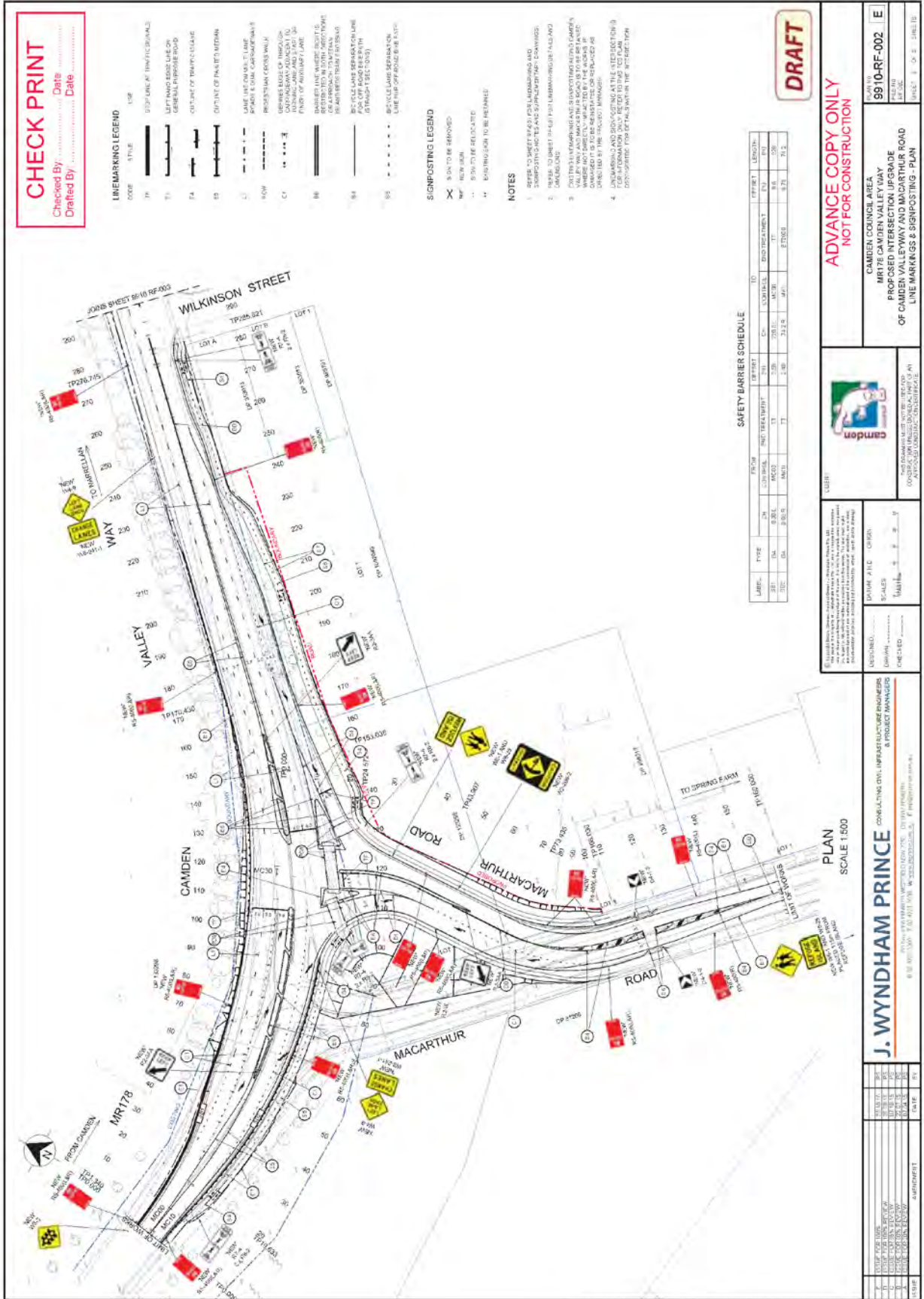
Detailed design has been undertaken for the upgrade of the intersection of Camden Valley Way and Macarthur Road and it is recommended that the Committee supports the associated signage, linemarking and devices.

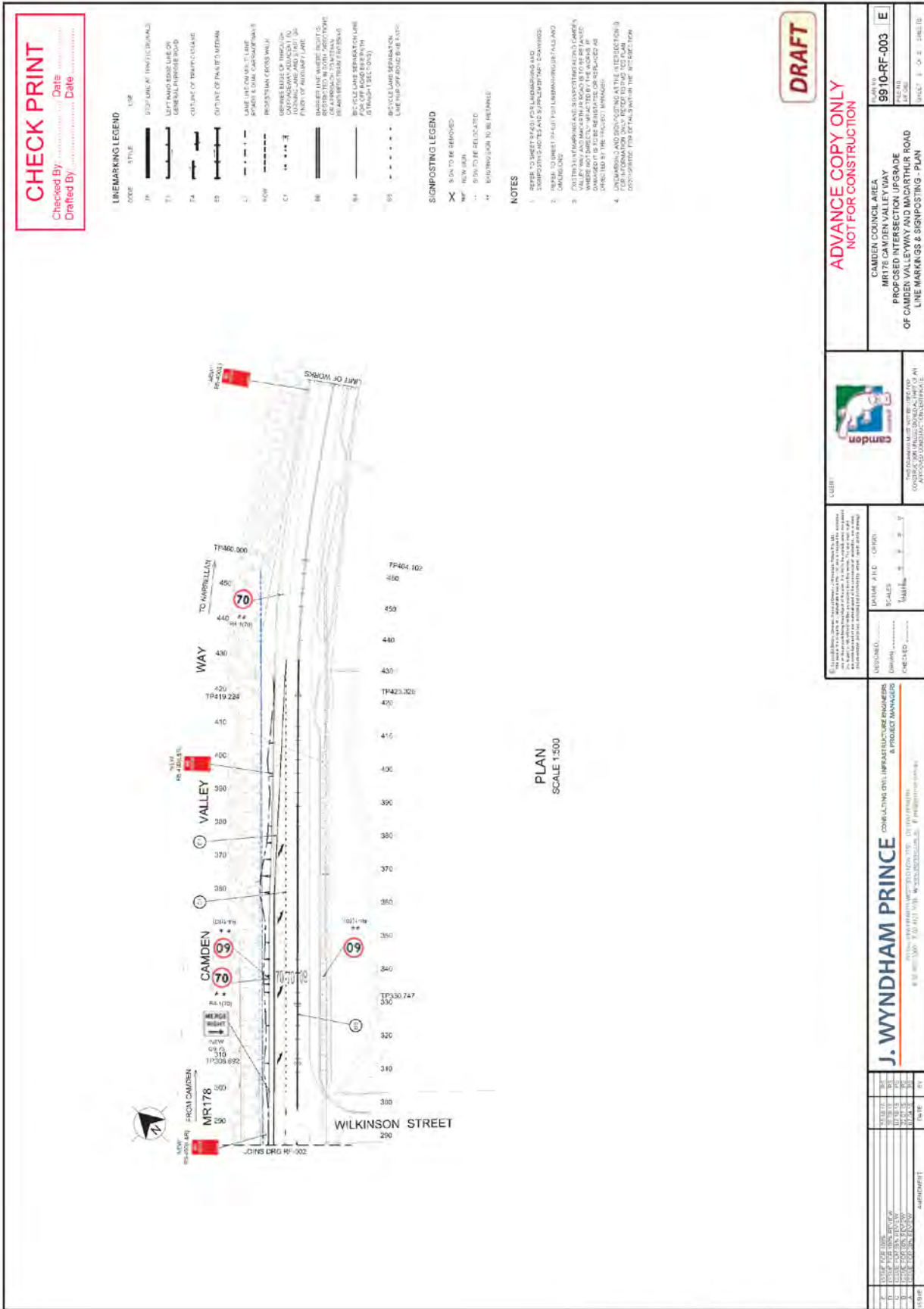
RECOMMENDED

The Local Traffic Committee recommends that Council, at the intersection of Camden Valley Way, Macarthur Road and Argyle Street, Elderslie, approves the signage, linemarking and devices associated with the upgrade of the intersection and installation of traffic signals as per Plan Numbers 9910-RF-002 Issue E and 9910-RF-003 Issue E.

ATTACHMENTS

1. Engineering Drawings - Camden Valley Way, Elderslie - Traffic Signals at the Macarthur Road Intersection







LOCAL TRAFFIC COMMITTEE

LTC07

**SUBJECT: PATHERTON PLACE AND STUCKEY PLACE, NARELLAN VALE -
GIVE WAY AND CENTRELINE TREATMENTS**

FROM: Traffic Engineer

TRIM #: 16/72019

PURPOSE OF REPORT

To seek Local Traffic Committee concurrence for the installation of signs and line marking at two intersections along Patherton Place, Narellan Vale.

BACKGROUND

Concerns have been raised regarding driver behaviour at intersections in Patherton Place and Stuckey Place. Measures to address the issues are the subject of this report.

MAIN REPORT

Following community concerns received by Council, an investigation has been undertaken at intersections in Patherton Place and Stuckey Place in Narellan Vale. This confirmed the geometry of existing non-standard T-intersections was a factor resulting in some motorists not giving way at the intersections and entering the intersection at speed.

To address this issue Council is proposing to install (see **Attachment 1**):

- Give Way signs (R1-2) and linemarking (TB/TB1); and
- Double barrier (BB) linemarking on the approaches.

A similar treatment has been successfully installed nearby at the intersection of Stuckey Place and Lady Anne Way.

Consultation has been undertaken with affected owners and occupiers. No responses were received.

FINANCIAL AND ASSET MANAGEMENT IMPLICATIONS

It is proposed that the cost be funded from the RMS Block Grant (Traffic Facilities Component) for the 2016/17 financial year.

CONCLUSION

Concerns have been raised about driver behaviour at various intersections in Narellan and it is recommended that the Committee supports additional traffic control measures to address this issue.

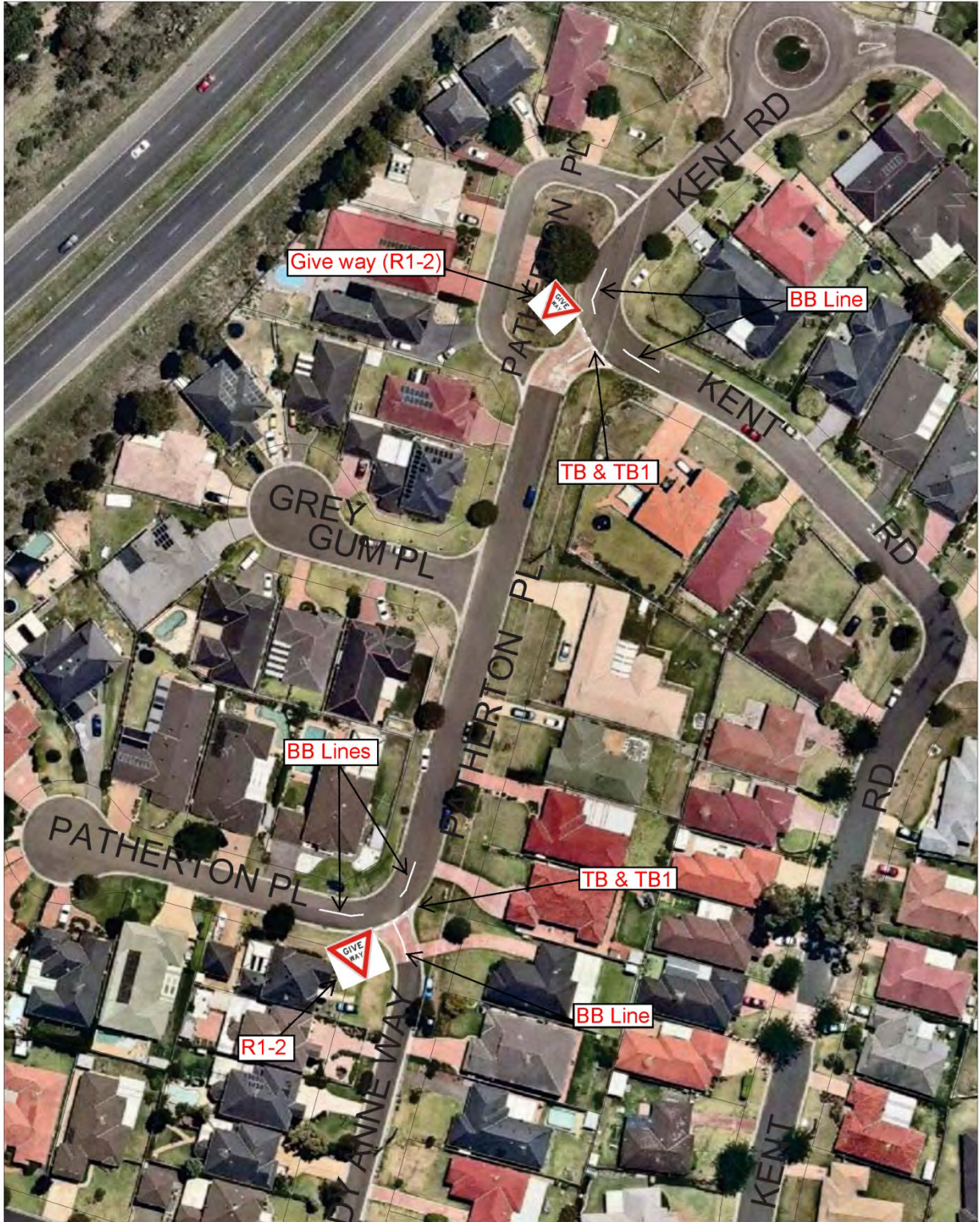
RECOMMENDED

The Local Traffic Committee recommends that Council, in Narellan Vale, approves Give Way signage (R1-2) and line marking (TB and TB1) at double barrier line marking (BB) at the following intersections:

- i. Patherton Place / Lady Anne Place;
- ii. Patherton Place / Melaleuca Road; and
- iii. Stuckey Place / Kent Road.

ATTACHMENTS

1. Patherton Place and Stuckey Place, Narellan Vale - Give Ways and Centrelines
2. Patherton Place and Stuckey Place, Narellan Vale - Give Ways and Centrelines
3. Patherton Place and Stuckey Place, Narellan Vale - Give Ways and Centrelines



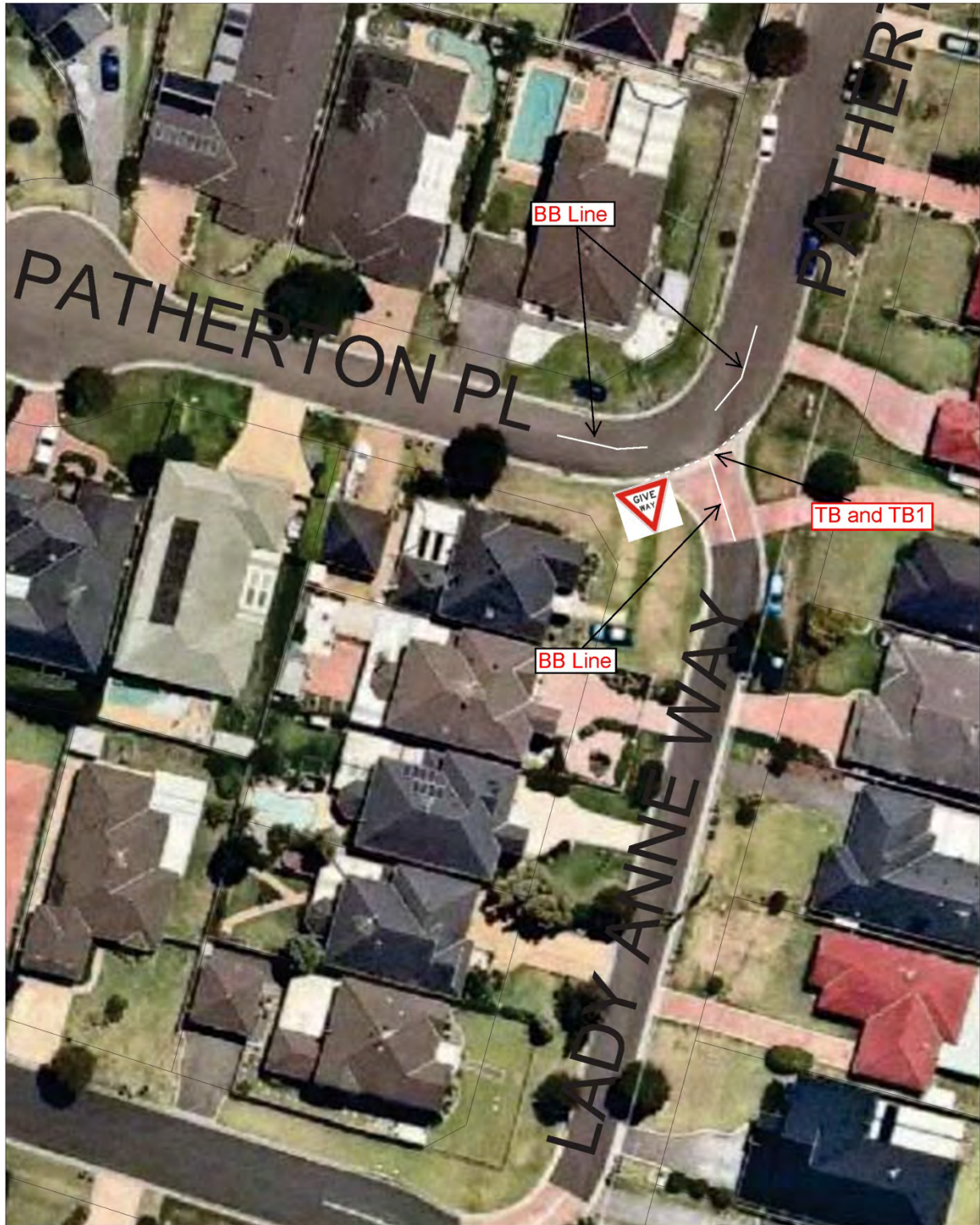

Scale: 1:1000
Printed Date: 10:08:16

Patherton Place, Narellan Vale - Give Way Treatments

N

This map has been prepared from Council records by the Land Information section. If you intend to rely on this information you should have this verified.

Camden Council accepts no responsibility for any errors or omissions. This map should not be reproduced without the permission of Camden Council.





Patherton Place / Lady Anne Way



This map has been prepared from Council records by the Land Information section. If you intend to rely on this information you should have this verified.

Camden Council accepts no responsibility for any errors or omissions. This map should not be reproduced without the permission of Camden Council.



| | | |
|--|--|--|
|  <p>Scale: 1 400 Printed Date: 10:08:16</p> | <p>Stuckey Pl / Kent Road, Narellan Vale</p> |  <p>This map has been prepared from Council records by the Land Information section. If you intend to rely on this information you should have this verified. Camden Council accepts no responsibility for any errors or omissions. This map should not be reproduced without the permission of Camden Council.</p> |
|--|--|--|

LOCAL TRAFFIC COMMITTEE

LTC08

SUBJECT: CAMDEN ACRES DRIVE, ELDERSLIE - GIVE WAY AND CENTRELINES AT INTERSECTION WITH LODGES ROAD

FROM: Manager Infrastructure Planning

TRIM #: 16/301352

PURPOSE OF REPORT

To seek Local Traffic Committee concurrence for the installation of signs and line marking at the intersection of Camden Acres Drive with Lodges Road, Elderslie.

BACKGROUND

Council has been advised of concerns regarding road safety at the intersection of Camden Acres Drive with Lodges Road, Elderslie. Traffic control measures are proposed which is the subject of this report.

MAIN REPORT

Following concerns received from the community, an investigation was undertaken by Council of the intersection of Camden Acres Drive with Lodges Road. This confirmed that the existing road layout is a factor resulting in some motorists not giving way on Camden Acres Drive and entering the intersection at speed. The issue is exacerbated by the relatively high volume of through traffic on Lodges Road.

To address this issue, Council is proposing to install the following measures (see **Attachment 1**):

- Give Way signage (R1-2) and line marking (TB/TB1) on Camden Acres Drive;
- A short length of Double barrier line marking (BB) to delineate around the front of the existing island on Camden Acres Drive; and
- Continuity line marking (C1) for 27 metres on Lodges Road to delineate the continuation of the edgelines.

FINANCIAL AND ASSET MANAGEMENT IMPLICATIONS

It is proposed that the cost be funded from the RMS Block Grant (Traffic Facilities Component) for the 2016/17 financial year at an approximate cost of \$2,000.

CONCLUSION

Concerns have been raised about driver behaviour on Camden Acres Drive at the intersection with Lodges Road, and it is recommended that the Committee supports additional traffic control measures to address this issue.





RECOMMENDED

The Local Traffic Committee recommends that Council on Lodges Road, Elderslie, at the intersection with Camden Acres Drive, approves Give Way signage (R1-2) and line marking (TB/TB1), double barrier line marking (BB) and continuity line marking (C1).

ATTACHMENTS

1. Camden Acres Drive, Elderslie - Give Way and Centrelines at Intersection with Lodges Road



| | | |
|--|---|--|
|  <p>Scale: 1:400 Printed Date: 29:08:16</p> | <p>Camden Acres Dr / Lodges Rd, Elderslie</p> |  <p>This map has been prepared from Council records by the Land Information section. If you intend to rely on this information you should have this verified. Camden Council accepts no responsibility for any errors or omissions. This map should not be reproduced without the permission of Camden Council.</p> |
|--|---|--|



LOCAL TRAFFIC COMMITTEE

LTC09

SUBJECT: SETON STREET, ORAN PARK - GIVE WAY TREATMENT
FROM: Team Leader Infrastructure Planning
TRIM #: 16/310402

PURPOSE OF REPORT

To seek Local Traffic Committee concurrence for the installation of Give Way treatments at the intersection of Seton Street and Marcus Loane Way, Oran Park.

BACKGROUND

A four-way intersection in Oran Park requires control to manage priority. This report details signage and linemarking to achieve that.

MAIN REPORT

Greenfields Development Company opened up the western end of Marcus Loane Way with Bond Street in June 2016, following the relocation of the display village. As such the four-way intersection of Marcus Loane Way and Seton Street requires formal traffic control to determine priority.

Give Way signs (R1-2) and linemarking (TB and TB1) and 10 metres of double barrier line are proposed on the Seton Street legs as shown in **Attachment 1**. This is due to the crest along Marcus Loane Way with pronounced crown though the intersection. As such, visibility is more limited on the Seton Street approaches.

The works will have no impact on on-street parking which is already physically restricted at the intersection by kerb extensions.

FINANCIAL AND ASSET MANAGEMENT IMPLICATIONS

The estimated cost of the recommended signage and line marking is \$800. It is proposed that the cost be funded from the RMS Block Grant (Traffic Facilities Component) for the 2016/17 financial year. Long term maintenance of the sign posting will be funded through the RMS Block Grant.

CONCLUSION

To manage priority at a four way intersection of Seton Street and Marcus Loane Way in Oran Park, it is recommended that the Committee supports Give Way controls on the Seton Street legs.

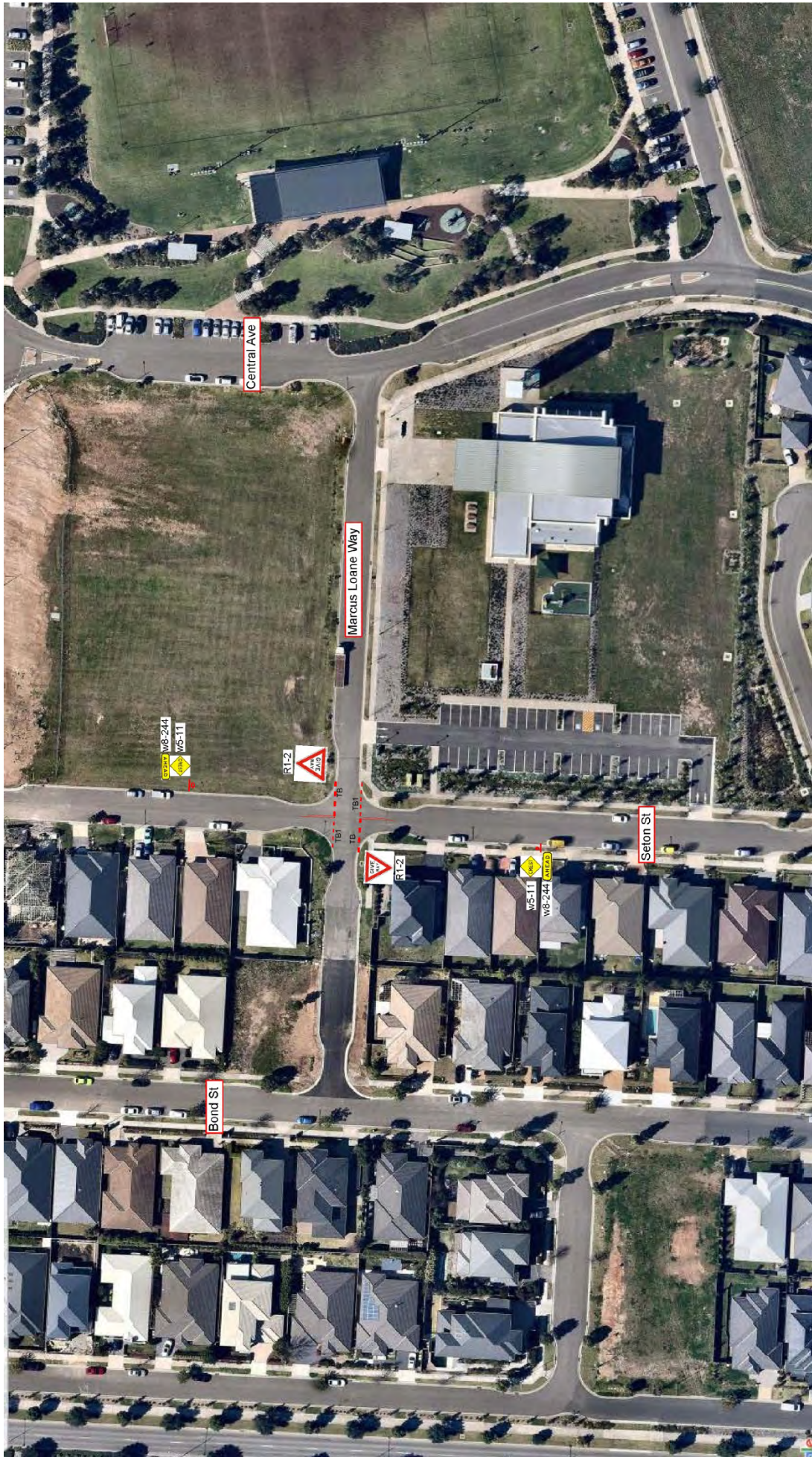
RECOMMENDED

The Local Traffic Committee recommends that Council in Seton Street, Oran Park, on the approaches to Marcus Loane Way, approves:

- (i) Give Way signs (R1-2) and associated line marking (TB and TB1); and
- (ii) Double barrier (BB) line marking for 10 metres.

ATTACHMENTS

1. Seton Street, Oran Park - Give Way Treatment



LOCAL TRAFFIC COMMITTEE

LTC10

**SUBJECT: ORAN PARK DRIVE AND PETER BROCK DRIVE, ORAN PARK -
ADDITIONAL BUS STOPS**

FROM: Manager Infrastructure Planning

TRIM #: 16/316684

PURPOSE OF REPORT

To seek Local Traffic Committee concurrence for the installation of new bus stops in Oran Park.

BACKGROUND

Council has been liaising with Busabout and Greenfields Development Company concerning provision of new bus stops for the 896 bus service between Oran Park and Campbelltown.

MAIN REPORT

The 896 bus route was extended through the Oran Park precinct from early 2016. To facilitate the above bus routes, Council is proposing the Bus Zones (R5-20 signage) 30 metres in length at the following locations as shown in **Attachment 1**:

- Peter Brock Drive, Oran Park – North side, adjacent to Buckingham Loop and Goss Loop and south side, adjacent to Richards Loop, Grand Prix Park and Webber Loop;
- Charles McIntosh Parkway, Cobbitty – North and south sides, west of The Northern Road; and
- Oran Park Drive, Oran Park – West side, south of South Circuit and adjacent to Webber Loop.

Further, it is also proposed to formalise a bus stop on Central Avenue, Oran Park in the vicinity of Anglicare Retirement Village for Interline bus 850 & 858 services.

Bus Zones are also proposed in the Catherine Field precinct at the following locations:

- Oran Park Drive, Oran Park – North side east of intersection with Catherine Park Drive and west of intersection with Camden Valley Way.

FINANCIAL AND ASSET MANAGEMENT IMPLICATIONS

It is proposed that the bus stop signage and concreting would be funded by Greenfields Development Company within the area of the Voluntary Planning Agreement and through contribution plans for Oran Park and Catherine Field precincts, at other locations.



CONCLUSION

Bus stops are required to support new bus services in the Oran Park precinct and it is recommended that the Committee supports this proposal.

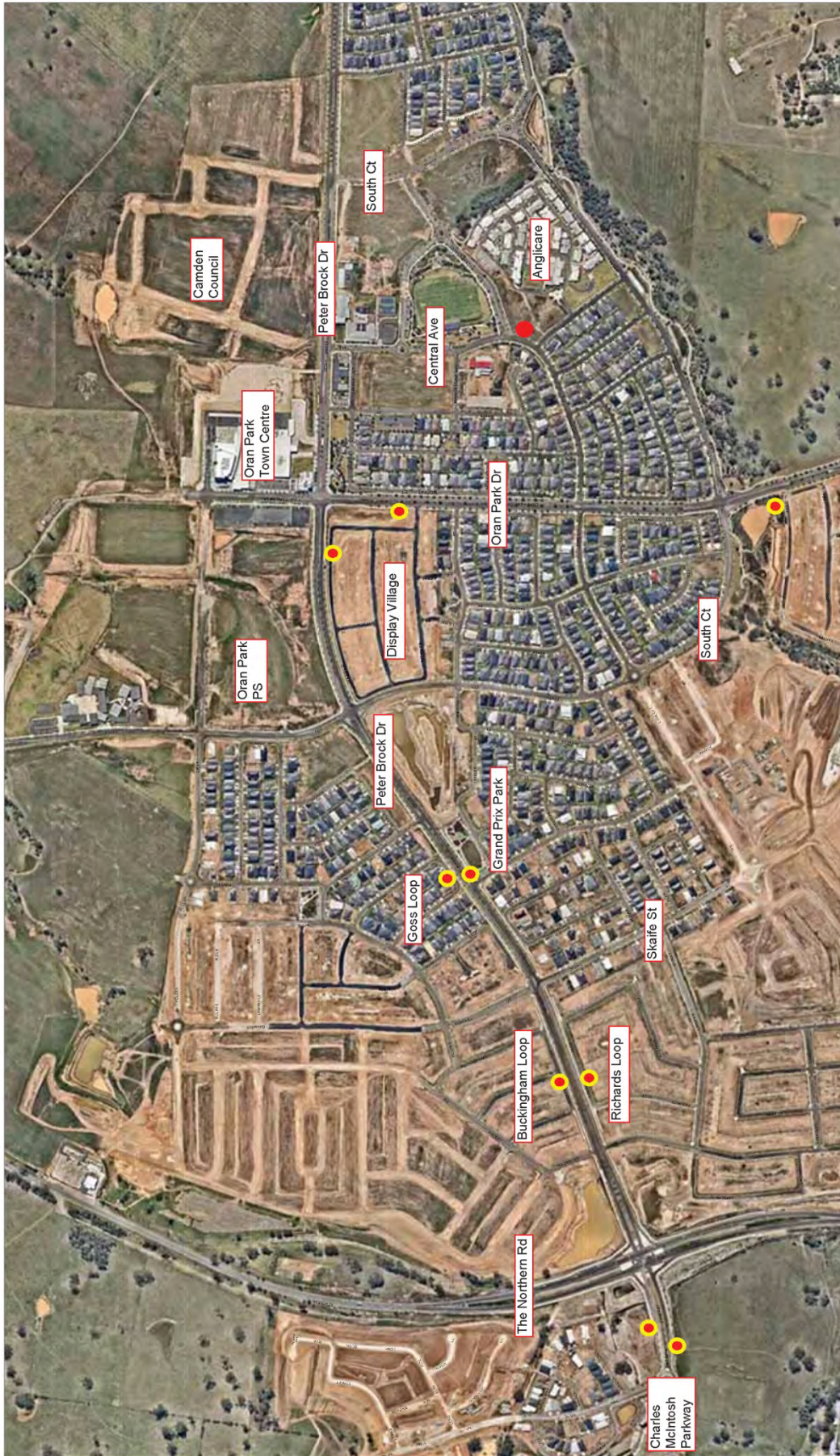
RECOMMENDED


The Local Traffic Committee recommends that Council, in Oran Park and Catherine Fields precincts approves Bus Zones (R5-20 signage) and bus stops at:

- i. Peter Brock Drive, Oran Park – North side, adjacent to Buckingham Loop and Goss Loop and south side, adjacent to Richards Loop, Grand Prix Park and Webber Loop;
- ii. Charles McIntosh Parkway, Cobbitty – North and south sides, west of The Northern Road;
- iii. Oran Park Drive, Oran Park – West side, south of South Circuit and adjacent to Webber Loop;
- iv. Oran Park Drive, Oran Park – North side, east of intersection with Catherine Park Drive and west of intersection with Camden Valley Way; and
- v. Central Avenue – south side adjacent to the retirement village (bus stop only).

ATTACHMENTS

1. Oran Park Drive and Peter Brock Drive, Oran Park - Additional Bus Stops





 This map has been prepared from Council records by the Land Information section. If you intend to rely on this information you should have this verified.

 Camden Council accepts no responsibility for any errors or omissions. This map should not be reproduced without the permission of Camden Council.

 Scale: 1:7,000 Printed Date: 21:12:15

-  Proposed 30metres bus zone
-  Proposed bus stop





Proposed 30metres bus zone



This map has been prepared from Council records by the Land Information section. If you intend to rely on this information you should have this verified.

Camden Council accepts no responsibility for any errors or omissions. This map should not be reproduced without the permission of Camden Council.

Scale: 1:5000

Printed Date: 01:11:16

LOCAL TRAFFIC COMMITTEE

LTC11

SUBJECT: BOURNE RIDGE, ORAN PARK - GIVE WAY TREATMENTS

FROM: Manager Infrastructure Planning

TRIM #: 16/317490

PURPOSE OF REPORT

To seek Local Traffic Committee concurrence for the installation of Give Way signs and their associated markings at various locations in Oran Park.

BACKGROUND

Concerns have been raised regarding the priority control at several intersections in Oran Park. The proposed traffic control is the subject of this report.

MAIN REPORT

A number of new roads were constructed in Oran Park as part of Tranche 4, Stage 2 and Tranche 5, Stage 5 of Oran Park Development in 2013. Greenfields Development Company is planning to install a final road pavement seal for these roads to fulfill their Development Consents.

Further to these works, it is proposed that priority control be installed at several intersections as shown in **Attachment 1** to provide clearer priority.

At four-way intersections in Bourne Ridge, Give Way signage (R1-2) and linemarking (TB/TB1) together with 10 metre lengths of double barrier (BB) lines are proposed on the side roads at Geoghegan Circuit/Cray Street and at Goss Loop/Jones Street. At the intersection of Steward Street and Bourne Ridge they are proposed on Bourne Ridge.

These measures are also proposed on Evans Street at the modified t-intersection with Carden Street due to the unclear priority.

The works will have no impact on on-street parking which is already physically restricted at the intersection by kerb extensions.

FINANCIAL AND ASSET MANAGEMENT IMPLICATIONS

It is proposed that the cost of works be funded by Greenfields Development Company.

CONCLUSION

Concerns have been raised about priority controls at a number of intersections in Oran Park and it is recommended that the Committee supports the measures proposed.



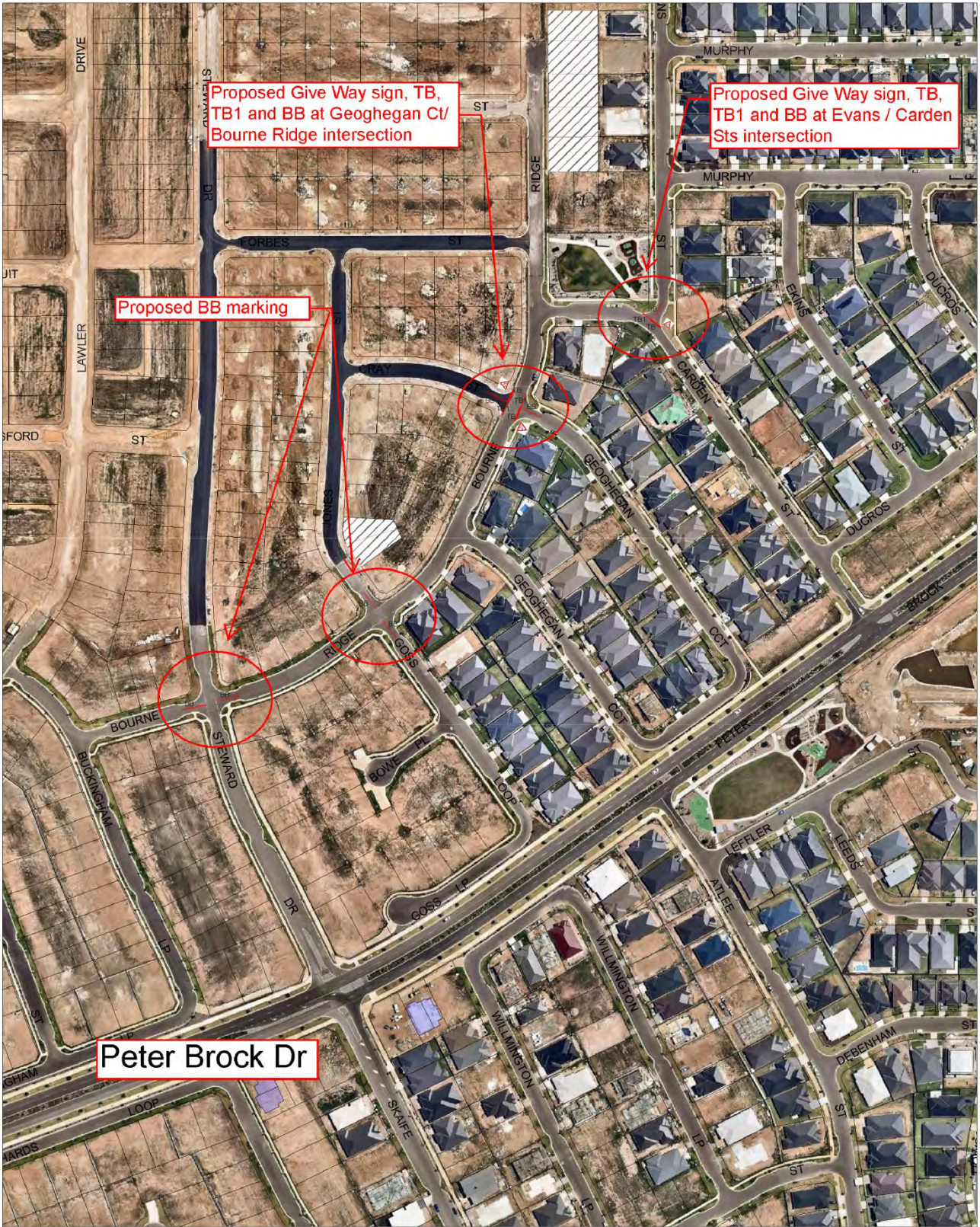
RECOMMENDED

The Local Traffic Committee recommends that Council, in the vicinity of Bourne Ridge, Oran Park approves the installation of:

- i. **Give Way signage (R1-2) and linemarking (TB/TB1) with 10 metres of double barrier (BB) lines on Geoghegan Circuit, Cray Street, Goss Loop and Jones Street at the approaches to Bourne Ridge;**
- ii. **Give Way signage (R1-2) and linemarking (TB/TB1) with 10 metres of double barrier (BB) lines on Bourne Ridge on the approaches to Steward Street; and**
- iii. **Give Way signage (R1-2) and linemarking (TB/TB1) with 10 metres of double barrier (BB) lines on Evans Street at the intersection with Carden Street.**

ATTACHMENTS

1. Bourne Ridge, Oran Park - Give Way Treatments



Scale: 1:3000
 Printed Date: 01.11.16



This map has been prepared from Council records by the Land Information section. If you intend to rely on this information you should have this verified.
 Camden Council accepts no responsibility for any errors or omissions. This map should not be reproduced without the permission of Camden Council.



LOCAL TRAFFIC COMMITTEE

LTC12

SUBJECT: PERMANENT ITEMS**FROM:** Team Leader Infrastructure Planning**TRIM #:** 16/310905

(i) Bike Plan

The Cycling Advisory Group met on 10 March 2016. An update of work underway on the Bike Plan was discussed at the meeting. A draft has been prepared for public exhibition.

2017/18 Program

Council made the following submissions:

- Cawdor Road - Sheathers Lane to Camden High School Shared Path design - pending; and
- Shared Path Signage and Linemarking - LGA-wide - pending.

(ii) Pedestrian Access Mobility Plan (PAMP)

2016/17 Program

The footpath construction program is underway in 2016/17 with paths completed in Hilder Street and Banksia Road. Consultations are underway in a number of other locations in Elderslie and Camden.

Council is progressing the following pedestrian projects in 2016/17 match funded by the Transport for NSW Active Transport Program and Safer Roads Program:

- Murray Street Pedestrian Crossing design - underway; and
- Cawdor Road Pedestrian Refuge (Currans Hill) - complete.

2017/18 Program

Council made the following submissions:

- Crookston Avenue Pedestrian Refuge - pending;
- Waterworth Drive Pedestrian Refuge Upgrade - pending; and
- William Mannix Avenue Pedestrian Refuge Upgrade - pending.

(iii) Black Spot Identification/Evaluation/Treatment

2016/17 Program

Council has secured Federal Funding for the following projects. Design is currently underway:

- Deepfields Road, Catherine Field – shoulder and intersection upgrades; and
- Burraborang Road/Cawdor Road, Cawdor - intersection upgrade.

2017/18 Program

Council made the following submissions:

- Wire Lane/Crookston Avenue intersection works - pending;
- Catherine Field Road - Shoulder Treatments - pending; and
- Welling Drive/Waterworth Drive/Henrietta Street roundabout upgrade - pending.

(iv) Upcoming Major Works/Events

| Location | Date (s) | Major Works/Event |
|-----------------------|------------------|---|
| Bringelly Road | Ongoing | Bringelly Road Upgrade (RMS project) |
| The Northern Road | Ongoing | The Northern Road Upgrade (RMS project) |
| Narellan Road | Ongoing | Narellan Road Upgrade (RMS project) |
| Oran Park Drive | Ongoing | Duplicating (Developer project - Hickson) |
| Argyle Street, Camden | 19 November 2016 | Light Up Camden Festival |
| Argyle Street, Camden | 26 January 2017 | Australia Day Parade |

RECOMMENDED

That items (i) to (iv) be noted.



LOCAL TRAFFIC COMMITTEE

LTC13

SUBJECT: FIRTH AVENUE, ORAN PARK - SIGNAGE, LINEMARKING AND DEVICES

FROM: Manager Infrastructure Planning

TRIM #: 16/316360

ELECTRONIC MEETING ITEM DATE: 25 July 2016

PURPOSE OF REPORT

To document concurrence previously provided by the Local Traffic Committee through an Electronic Meeting for the extension of Firth Avenue, Oran Park from Tranche 31 Stage 1 Development to Perkins Drive, Oran Park. The location is highlighted on **Attachment 1**. This is related to DA number 2015/1030.

MAIN REPORT

A signage and line marking plan has been received by Council for the extension of Firth Avenue, Oran Park from Tranche 31 Stage 1 Development to Perkins Drive, Oran Park. The location is highlighted on **Attachment 1**. This is related to DA number 2015/1030.

The Engineering Drawing No. 702 Rev. 3 prepared by Calibre Consulting, provides details of the proposed signage, line marking and devices (**Attachment 2**). The plan is considered to be in accordance with Austroads, Australian Standards and RMS supplements for the placement of regulatory signage and line marking subject to No Stopping restrictions in Firth Avenue be extended to meet the existing No Stopping restrictions in Perkins Drive as shown on a marked up plan.

| Electronic Meeting Reference | Agreed recommendation of the Local Traffic Committee |
|-------------------------------------|---|
| 2016/47 | <p>The Local Traffic Committee recommends that Council approves the regulatory signs, line marking and devices on Firth Avenue, Oran Park as shown on the Engineering Drawing No. 702, Rev.3 subject to:</p> <ul style="list-style-type: none"> i. No Stopping restrictions on Firth Avenue be extended into Perkins Drive to meet the existing No Stopping restrictions in Perkins Drive, ii. The installation being completed by the applicant at its cost; iii. All signage being size A; iv. Street lighting levels for devices being in accordance with Australian Standard AS/NZS 1158, subject to further Council approval of the lighting design; and v. Speed zoning and speed limits signage plan be prepared and referred to Roads and Maritime Services (RMS) for review and approval. |

This recommendation was supported unanimously by the four voting members.

This recommendation has been resolved by a Council Officer under Delegated Authority.

RECOMMENDED

That Council receives and notes the report.

ATTACHMENTS

1. Locality Plan - Firth Avenue, Oran Park - Signage, Linemarking and Devices
2. Engineering Drawing - Firth Avenue, Oran Park - Signage, Linemarking and Devices



ORAN PARK SOUTH DEVELOPMENT

CREEK CROSSING

FOR CONSTRUCTION CERTIFICATE
FOR GREENFIELDS DEVELOPMENT COMPANY



LOCALITY PLAN
N.T.S.

LGA CAMDEN COUNCIL

LOT 7 D.P. 1173813 &
LOT 18 D.P. 1153031 & PART LOT 19 D.P. 1153031
D.A. 1030/2015



Drawing List

| NO. | DRAWING TITLE |
|-----|-------------------------|
| 00 | GENERAL |
| 01 | GENERAL LAYOUT PLAN |
| 02 | GENERAL EROSION CONTROL |
| 03 | SEWAGE TREATMENT PLANT |
| 04 | SEWAGE TREATMENT PLANT |
| 05 | SEWAGE TREATMENT PLANT |
| 06 | SEWAGE TREATMENT PLANT |
| 07 | SEWAGE TREATMENT PLANT |
| 08 | SEWAGE TREATMENT PLANT |
| 09 | SEWAGE TREATMENT PLANT |
| 10 | SEWAGE TREATMENT PLANT |
| 11 | SEWAGE TREATMENT PLANT |
| 12 | SEWAGE TREATMENT PLANT |
| 13 | SEWAGE TREATMENT PLANT |
| 14 | SEWAGE TREATMENT PLANT |
| 15 | SEWAGE TREATMENT PLANT |
| 16 | SEWAGE TREATMENT PLANT |
| 17 | SEWAGE TREATMENT PLANT |
| 18 | SEWAGE TREATMENT PLANT |
| 19 | SEWAGE TREATMENT PLANT |
| 20 | SEWAGE TREATMENT PLANT |
| 21 | SEWAGE TREATMENT PLANT |
| 22 | SEWAGE TREATMENT PLANT |
| 23 | SEWAGE TREATMENT PLANT |
| 24 | SEWAGE TREATMENT PLANT |
| 25 | SEWAGE TREATMENT PLANT |
| 26 | SEWAGE TREATMENT PLANT |
| 27 | SEWAGE TREATMENT PLANT |
| 28 | SEWAGE TREATMENT PLANT |
| 29 | SEWAGE TREATMENT PLANT |
| 30 | SEWAGE TREATMENT PLANT |
| 31 | SEWAGE TREATMENT PLANT |
| 32 | SEWAGE TREATMENT PLANT |
| 33 | SEWAGE TREATMENT PLANT |
| 34 | SEWAGE TREATMENT PLANT |
| 35 | SEWAGE TREATMENT PLANT |
| 36 | SEWAGE TREATMENT PLANT |
| 37 | SEWAGE TREATMENT PLANT |
| 38 | SEWAGE TREATMENT PLANT |
| 39 | SEWAGE TREATMENT PLANT |
| 40 | SEWAGE TREATMENT PLANT |
| 41 | SEWAGE TREATMENT PLANT |
| 42 | SEWAGE TREATMENT PLANT |
| 43 | SEWAGE TREATMENT PLANT |
| 44 | SEWAGE TREATMENT PLANT |
| 45 | SEWAGE TREATMENT PLANT |
| 46 | SEWAGE TREATMENT PLANT |
| 47 | SEWAGE TREATMENT PLANT |
| 48 | SEWAGE TREATMENT PLANT |
| 49 | SEWAGE TREATMENT PLANT |
| 50 | SEWAGE TREATMENT PLANT |
| 51 | SEWAGE TREATMENT PLANT |
| 52 | SEWAGE TREATMENT PLANT |
| 53 | SEWAGE TREATMENT PLANT |
| 54 | SEWAGE TREATMENT PLANT |
| 55 | SEWAGE TREATMENT PLANT |
| 56 | SEWAGE TREATMENT PLANT |
| 57 | SEWAGE TREATMENT PLANT |
| 58 | SEWAGE TREATMENT PLANT |
| 59 | SEWAGE TREATMENT PLANT |
| 60 | SEWAGE TREATMENT PLANT |
| 61 | SEWAGE TREATMENT PLANT |
| 62 | SEWAGE TREATMENT PLANT |
| 63 | SEWAGE TREATMENT PLANT |
| 64 | SEWAGE TREATMENT PLANT |
| 65 | SEWAGE TREATMENT PLANT |
| 66 | SEWAGE TREATMENT PLANT |
| 67 | SEWAGE TREATMENT PLANT |
| 68 | SEWAGE TREATMENT PLANT |
| 69 | SEWAGE TREATMENT PLANT |
| 70 | SEWAGE TREATMENT PLANT |
| 71 | SEWAGE TREATMENT PLANT |
| 72 | SEWAGE TREATMENT PLANT |
| 73 | SEWAGE TREATMENT PLANT |
| 74 | SEWAGE TREATMENT PLANT |
| 75 | SEWAGE TREATMENT PLANT |
| 76 | SEWAGE TREATMENT PLANT |
| 77 | SEWAGE TREATMENT PLANT |
| 78 | SEWAGE TREATMENT PLANT |
| 79 | SEWAGE TREATMENT PLANT |
| 80 | SEWAGE TREATMENT PLANT |
| 81 | SEWAGE TREATMENT PLANT |
| 82 | SEWAGE TREATMENT PLANT |
| 83 | SEWAGE TREATMENT PLANT |
| 84 | SEWAGE TREATMENT PLANT |
| 85 | SEWAGE TREATMENT PLANT |
| 86 | SEWAGE TREATMENT PLANT |
| 87 | SEWAGE TREATMENT PLANT |
| 88 | SEWAGE TREATMENT PLANT |
| 89 | SEWAGE TREATMENT PLANT |
| 90 | SEWAGE TREATMENT PLANT |
| 91 | SEWAGE TREATMENT PLANT |
| 92 | SEWAGE TREATMENT PLANT |
| 93 | SEWAGE TREATMENT PLANT |
| 94 | SEWAGE TREATMENT PLANT |
| 95 | SEWAGE TREATMENT PLANT |
| 96 | SEWAGE TREATMENT PLANT |
| 97 | SEWAGE TREATMENT PLANT |
| 98 | SEWAGE TREATMENT PLANT |
| 99 | SEWAGE TREATMENT PLANT |
| 100 | SEWAGE TREATMENT PLANT |

ORAN PARK SOUTH DEVELOPMENT
CREEK CROSSING

Project No: XI-4340-05
Scale: CC
Revision: 12/07/2016
Drawing No: 000
Sheet No: 3



LINEMARKING LEGEND

| LINE TYPE | USE | DIMENSIONS (M) (FOR DIMENSIONS SHOWN - SEE MARKER SPACING COLUMN) | COLOUR | BASED MARKER TYPE | MARKER SPACING (M) (H) | ALTERNATIVE SPACING (M) (B) |
|-----------|---|--|--------|-------------------|------------------------|-----------------------------|
| EA | UP TO 100% OF TRAFFIC SIGNAL CONTROLLED STOP LINE | 1000 | WHITE | Y | 0 | 10 |
| TB | DOWN PAVEMENT STOP LINE | 1000 | WHITE | INT PRO (R) | - | - |
| TB1 | DOWN PAVEMENT STOP LINE (RIGHT SIDE OF ROAD) | 1000 | WHITE | INT PRO (R) | - | - |

FOR CONSTRUCTION CERTIFICATE

Project: **ORAN PARK SOUTH DEVELOPMENT**

Client: **GREENFIELDS Development Company**

Prepared by: **RECEL STOUTER**

Scale: **1:250**

Date: **11/11/16**

Project No: **16/0000000000**

Sheet No: **CC 002**

Scale: **1:250**



LOCAL TRAFFIC COMMITTEE

LTC14

SUBJECT: CAMDEN VALLEY WAY, CATHERINE FIELD - SIGNAGE, LINEMARKING AND DEVICES ASSOCIATED WITH SUBDIVISION OF NOS. 719, 721, 729 AND 735

FROM: Manager Infrastructure Planning

TRIM #: 16/291242

ELECTRONIC MEETING ITEM DATE: 12 August 2016

PURPOSE OF REPORT

To document concurrence previously provided by the Local Traffic Committee through an Electronic Meeting for the construction of new roads associated with a subdivision at 719, 721, 729 and 735 Camden Valley Way, Catherine Field.

MAIN REPORT

Signage and line marking plans have been received by Council for the construction of new roads associated with a subdivision at 719, 721, 729 and 735 Camden Valley Way, Catherine Field. This is related to DA number 2015/1134. The proposed development is to create 92 residential lots, 11 residue lots and 1 drainage reserve lot.

The location is highlighted on **Attachment 1**, accessed from a new left-in, left out intersection off the western side of Camden Valley Way. This section of Camden Valley Way is a State Road under the control of Roads and Maritime Services.

Engineering Drawing No. 073-15C-CC-451, Rev. C and 073-15C-CC-452 Rev. C prepared by Craig & Rhodes, provide details of the proposed signage, line marking and device (**Attachment 2**). The plans are considered to be in accordance with Austroads, Australian Standards and RMS supplements for the placement of regulatory signage and line marking subject to:

- Give Way signage (R1-2) and linemarking (TB and TB1) and double barrier (BB) lines at the intersection of Road No. 7 & Road No. 1, Road No. 6 and Road No. 1, Road No. 4 and Road No. 1 and Road No. 5 and Road No. 1 being removed;
- No Stopping restrictions (R4-500 signage) be installed on one side of Road No. 3 for the whole length; and
- Signage, marking and device at the intersection of Camden Valley Way and Road No. 1 be referred to RMS for review and approval.

| Electronic Meeting Reference | Agreed recommendation of the Local Traffic Committee |
|------------------------------|---|
| 2016/48 | The Local Traffic Committee recommends that Council approves the regulatory signs, line marking and devices in the vicinity of Camden Valley Way as shown on the Engineering Drawing No. 073-15C-CC-451, Rev. C and 073-15C-CC-452 Rev. C subject to: |

| | |
|--|---|
| | <ul style="list-style-type: none">i. Give Way sign, TB, TB1 and BB line at the intersection of Road No. 7 and Road No. 1, Road No. 6 and Road No. 1, Road No. 4 and Road No. 1 and Road No. 5 and Road No. 1 being removed;ii. No Stopping restrictions being installed on one side of Road No. 3 for the whole length;iii. The installation being completed by the applicant at its cost;iv. Signage, marking and device at the intersection of Camden Valley Way and Road No. 1 being referred to RMS for review and approval;v. All signage being sign size A;vi. Street lighting levels for devices being in accordance with Australian Standard AS/NZS 1158, subject to further Council approval of the lighting design; andvii. Speed zoning and speed limits signage plan be prepared and referred to Roads and Maritime Services (RMS) for review and approval. |
|--|---|

This recommendation was supported unanimously by the four voting members.

This recommendation has been resolved by a Council Officer under Delegated Authority.

RECOMMENDED

That Council receives and notes the report.

ATTACHMENTS

1. Locality Plan - Camden Valley Way, Catherine Field - Signage, Linemarking and Devices
2. Engineering Drawings - Camden Valley Way, Catherine Field - Signage, Linemarking and Devices

PROPOSED SUBDIVISION OF LOTS 2, 3 & 4 IN D.P.31996 AND LOT 291 D.P.708154 CAMDEN VALLEY WAY, CATHERINE FIELD

CIVIL WORKS CONSTRUCTION CERTIFICATE



| DRAWING No. | DRAWING TITLE |
|-------------|---|
| 073154-001 | PROPOSED SUBDIVISION OF LOTS 2, 3 & 4 IN D.P.31996 AND LOT 291 D.P.708154 |
| 073154-002 | PROPOSED SUBDIVISION OF LOTS 2, 3 & 4 IN D.P.31996 AND LOT 291 D.P.708154 |
| 073154-003 | PROPOSED SUBDIVISION OF LOTS 2, 3 & 4 IN D.P.31996 AND LOT 291 D.P.708154 |
| 073154-004 | PROPOSED SUBDIVISION OF LOTS 2, 3 & 4 IN D.P.31996 AND LOT 291 D.P.708154 |
| 073154-005 | PROPOSED SUBDIVISION OF LOTS 2, 3 & 4 IN D.P.31996 AND LOT 291 D.P.708154 |
| 073154-006 | PROPOSED SUBDIVISION OF LOTS 2, 3 & 4 IN D.P.31996 AND LOT 291 D.P.708154 |
| 073154-007 | PROPOSED SUBDIVISION OF LOTS 2, 3 & 4 IN D.P.31996 AND LOT 291 D.P.708154 |
| 073154-008 | PROPOSED SUBDIVISION OF LOTS 2, 3 & 4 IN D.P.31996 AND LOT 291 D.P.708154 |
| 073154-009 | PROPOSED SUBDIVISION OF LOTS 2, 3 & 4 IN D.P.31996 AND LOT 291 D.P.708154 |
| 073154-010 | PROPOSED SUBDIVISION OF LOTS 2, 3 & 4 IN D.P.31996 AND LOT 291 D.P.708154 |
| 073154-011 | PROPOSED SUBDIVISION OF LOTS 2, 3 & 4 IN D.P.31996 AND LOT 291 D.P.708154 |
| 073154-012 | PROPOSED SUBDIVISION OF LOTS 2, 3 & 4 IN D.P.31996 AND LOT 291 D.P.708154 |
| 073154-013 | PROPOSED SUBDIVISION OF LOTS 2, 3 & 4 IN D.P.31996 AND LOT 291 D.P.708154 |
| 073154-014 | PROPOSED SUBDIVISION OF LOTS 2, 3 & 4 IN D.P.31996 AND LOT 291 D.P.708154 |
| 073154-015 | PROPOSED SUBDIVISION OF LOTS 2, 3 & 4 IN D.P.31996 AND LOT 291 D.P.708154 |
| 073154-016 | PROPOSED SUBDIVISION OF LOTS 2, 3 & 4 IN D.P.31996 AND LOT 291 D.P.708154 |
| 073154-017 | PROPOSED SUBDIVISION OF LOTS 2, 3 & 4 IN D.P.31996 AND LOT 291 D.P.708154 |
| 073154-018 | PROPOSED SUBDIVISION OF LOTS 2, 3 & 4 IN D.P.31996 AND LOT 291 D.P.708154 |
| 073154-019 | PROPOSED SUBDIVISION OF LOTS 2, 3 & 4 IN D.P.31996 AND LOT 291 D.P.708154 |
| 073154-020 | PROPOSED SUBDIVISION OF LOTS 2, 3 & 4 IN D.P.31996 AND LOT 291 D.P.708154 |
| 073154-021 | PROPOSED SUBDIVISION OF LOTS 2, 3 & 4 IN D.P.31996 AND LOT 291 D.P.708154 |
| 073154-022 | PROPOSED SUBDIVISION OF LOTS 2, 3 & 4 IN D.P.31996 AND LOT 291 D.P.708154 |
| 073154-023 | PROPOSED SUBDIVISION OF LOTS 2, 3 & 4 IN D.P.31996 AND LOT 291 D.P.708154 |
| 073154-024 | PROPOSED SUBDIVISION OF LOTS 2, 3 & 4 IN D.P.31996 AND LOT 291 D.P.708154 |
| 073154-025 | PROPOSED SUBDIVISION OF LOTS 2, 3 & 4 IN D.P.31996 AND LOT 291 D.P.708154 |
| 073154-026 | PROPOSED SUBDIVISION OF LOTS 2, 3 & 4 IN D.P.31996 AND LOT 291 D.P.708154 |
| 073154-027 | PROPOSED SUBDIVISION OF LOTS 2, 3 & 4 IN D.P.31996 AND LOT 291 D.P.708154 |
| 073154-028 | PROPOSED SUBDIVISION OF LOTS 2, 3 & 4 IN D.P.31996 AND LOT 291 D.P.708154 |
| 073154-029 | PROPOSED SUBDIVISION OF LOTS 2, 3 & 4 IN D.P.31996 AND LOT 291 D.P.708154 |
| 073154-030 | PROPOSED SUBDIVISION OF LOTS 2, 3 & 4 IN D.P.31996 AND LOT 291 D.P.708154 |
| 073154-031 | PROPOSED SUBDIVISION OF LOTS 2, 3 & 4 IN D.P.31996 AND LOT 291 D.P.708154 |
| 073154-032 | PROPOSED SUBDIVISION OF LOTS 2, 3 & 4 IN D.P.31996 AND LOT 291 D.P.708154 |
| 073154-033 | PROPOSED SUBDIVISION OF LOTS 2, 3 & 4 IN D.P.31996 AND LOT 291 D.P.708154 |
| 073154-034 | PROPOSED SUBDIVISION OF LOTS 2, 3 & 4 IN D.P.31996 AND LOT 291 D.P.708154 |
| 073154-035 | PROPOSED SUBDIVISION OF LOTS 2, 3 & 4 IN D.P.31996 AND LOT 291 D.P.708154 |
| 073154-036 | PROPOSED SUBDIVISION OF LOTS 2, 3 & 4 IN D.P.31996 AND LOT 291 D.P.708154 |
| 073154-037 | PROPOSED SUBDIVISION OF LOTS 2, 3 & 4 IN D.P.31996 AND LOT 291 D.P.708154 |
| 073154-038 | PROPOSED SUBDIVISION OF LOTS 2, 3 & 4 IN D.P.31996 AND LOT 291 D.P.708154 |
| 073154-039 | PROPOSED SUBDIVISION OF LOTS 2, 3 & 4 IN D.P.31996 AND LOT 291 D.P.708154 |
| 073154-040 | PROPOSED SUBDIVISION OF LOTS 2, 3 & 4 IN D.P.31996 AND LOT 291 D.P.708154 |
| 073154-041 | PROPOSED SUBDIVISION OF LOTS 2, 3 & 4 IN D.P.31996 AND LOT 291 D.P.708154 |
| 073154-042 | PROPOSED SUBDIVISION OF LOTS 2, 3 & 4 IN D.P.31996 AND LOT 291 D.P.708154 |
| 073154-043 | PROPOSED SUBDIVISION OF LOTS 2, 3 & 4 IN D.P.31996 AND LOT 291 D.P.708154 |
| 073154-044 | PROPOSED SUBDIVISION OF LOTS 2, 3 & 4 IN D.P.31996 AND LOT 291 D.P.708154 |
| 073154-045 | PROPOSED SUBDIVISION OF LOTS 2, 3 & 4 IN D.P.31996 AND LOT 291 D.P.708154 |
| 073154-046 | PROPOSED SUBDIVISION OF LOTS 2, 3 & 4 IN D.P.31996 AND LOT 291 D.P.708154 |
| 073154-047 | PROPOSED SUBDIVISION OF LOTS 2, 3 & 4 IN D.P.31996 AND LOT 291 D.P.708154 |
| 073154-048 | PROPOSED SUBDIVISION OF LOTS 2, 3 & 4 IN D.P.31996 AND LOT 291 D.P.708154 |
| 073154-049 | PROPOSED SUBDIVISION OF LOTS 2, 3 & 4 IN D.P.31996 AND LOT 291 D.P.708154 |
| 073154-050 | PROPOSED SUBDIVISION OF LOTS 2, 3 & 4 IN D.P.31996 AND LOT 291 D.P.708154 |

CONSTRUCTION CERTIFICATE

| | | |
|---|--|---|
| | | |
| PROPOSED SUBDIVISION OF LOT 2, 3 AND 4 IN D.P. 31996 AND LOT 291 D.P. 708154 CAMDEN VALLEY WAY, CATHERINE FIELD | | COVER SHEET, LOCALITY PLAN AND INDEX SHEET |
| PROJECT NO: 073154-001 SHEET NO: 01 OF 01 | | DATE: 07/31/15 |





LOCAL TRAFFIC COMMITTEE

LTC15

SUBJECT: LONGVIEW ROAD, GLEDWOOD HILLS - THE HERMITAGE STAGE 24B SUBDIVISION - SIGNAGE, LINEMARKING AND DEVICES

FROM: Manager Infrastructure Planning

TRIM #: 16/292629

ELECTRONIC MEETING ITEM DATE: 25 August 2016

PURPOSE OF REPORT

To document concurrence previously provided by the Local Traffic Committee through an Electronic Meeting for the construction of new roads associated with the development of The Hermitage. The location is highlighted on **Attachment 1**. This relates to the development of 2 Longview Road, Gledswood Hills (The Hermitage - stage 24B).

MAIN REPORT

Signage and line marking plans have been received by Council for the construction of new roads associated with the development of The Hermitage. The location is highlighted on **Attachment 1**. This relates to the development of 2 Longview Road, Gledswood Hills (The Hermitage - stage 24B).

The Engineering Drawing No. TR24-CI-505-AA007442CC Stage 24B Issue 02 prepared by Arcadis, provides details of the proposed signage and line marking (**Attachment 2**). The plans (subject to incorporating the marked up amendments) are considered to be in accordance with Austroads, Australian Standards and RMS supplements for the placement of regulatory signage and line marking.

| Electronic Meeting Reference | Agreed recommendation of the Local Traffic Committee |
|-------------------------------------|---|
| 2016/49 | <p>The Local Traffic Committee recommends that Council approves the regulatory signs, line marking and devices in Gledswood Hills (in the vicinity of Longview Road) as shown on the Engineering Drawing No. TR24-CI-505- AA007442CC Stage 24B Issue 02 subject to:</p> <ul style="list-style-type: none"> i. The Give Way signs (R1-2) and associated line marking (TB and BB) at the intersections with Rochford Road (as marked on the plan) being removed; ii. The installation being completed by the applicant at its cost; iii. Street lighting levels for devices being in accordance with Australian Standard AS/NZS 1158, subject to further Council approval of the lighting design; and iv. Speed zoning and speed limits signage plan being referred to Roads and Maritime Services (RMS) for review and approval. |



This recommendation was supported unanimously by the four voting members.

This recommendation has been resolved by a Council Officer under Delegated Authority.

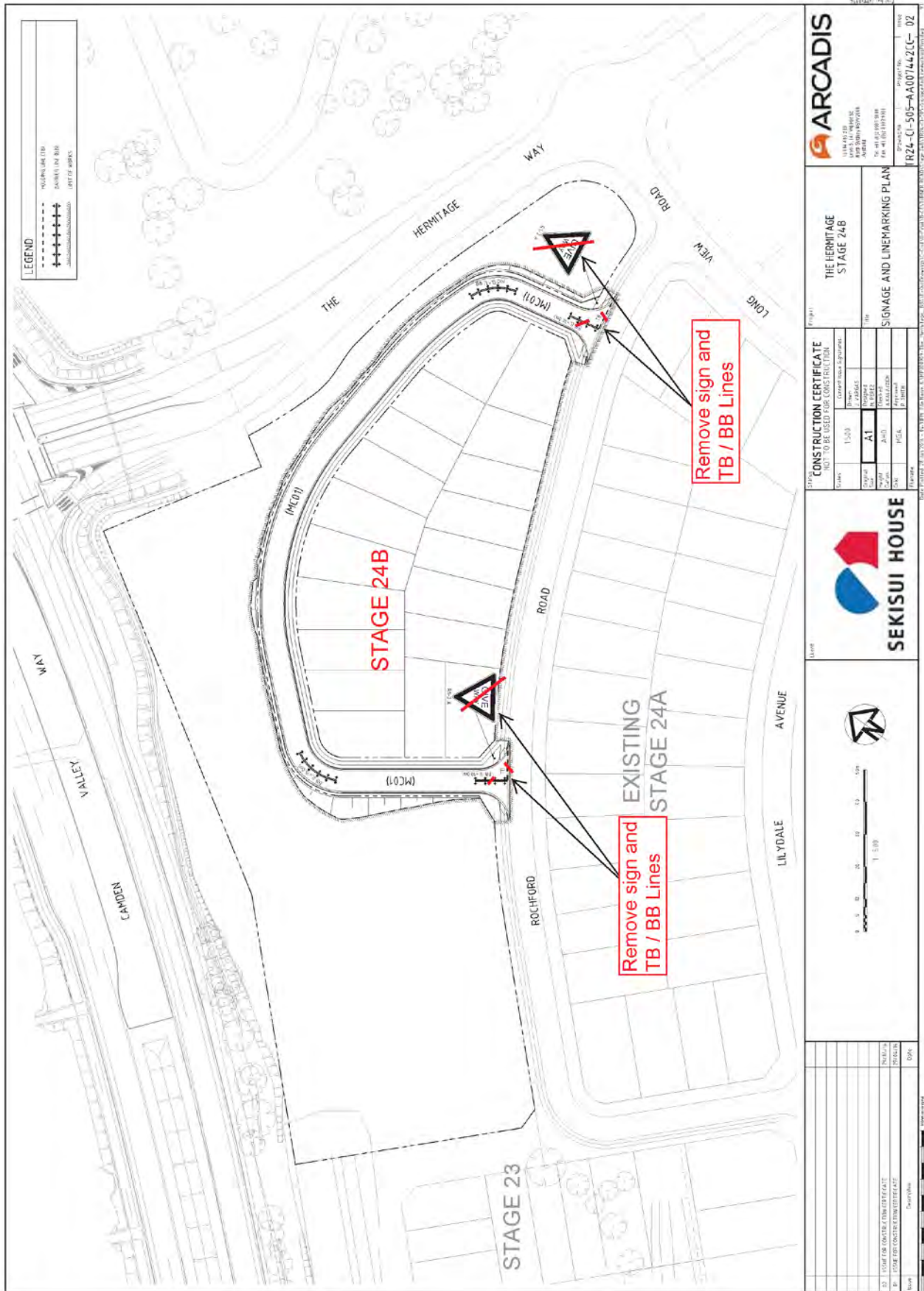
RECOMMENDED

That Council receives and notes the report.

ATTACHMENTS

1. Locality Plan - 2 Longview Road, Gledswood Hills (The Hermitage, Stage 24B) - Signage, Linemarking and Devices
2. Engineering Drawing - 2 Longview Road, Gledswood Hills (The Hermitage, Stage 24B) - Signage, Linemarking and Devices





LOCAL TRAFFIC COMMITTEE

LTC16

SUBJECT: LONGVIEW ROAD, GLEDSDOOD HILLS - THE HERMITAGE STAGE 11 SUBDIVISION SIGNAGE, LINEMARKING AND DEVICES

FROM: Manager Infrastructure Planning

TRIM #: 16/315168

ELECTRONIC MEETING ITEM DATE: 29 August 2016

PURPOSE OF REPORT

To document concurrence previously provided by the Local Traffic Committee through an Electronic Meeting for the construction of new roads associated with the development of The Hermitage, Stage 11A & 11B. The location is highlighted on **Attachment 1**. This relates to the development number DA/2015/311.

MAIN REPORT

Signage and line marking plans have been received by Council for the construction of new roads associated with the development of The Hermitage, Stage 11A & 11B. The location is highlighted on **Attachment 1**. This relates to the development number DA/2015/311.

The Engineering Drawing No. TR11-C1-505-AA007442CC Issue 3 and TR11-C1-506-AA007442CC Issue 4 prepared by Arcadis, provides details of the proposed signage and line marking (**Attachment 2**). The plans are considered to be in accordance with Austroads, Australian Standards and RMS supplements for the placement of regulatory signage and line marking.

Council has requested the Give Way signs (R1-2), TB, TB1 and BB markings at the intersections of Road03/Tarrawara Avenue, Road06/Long View Road and Road02/Long View Avenue be removed.

| Electronic Meeting Reference | Agreed recommendation of the Local Traffic Committee |
|-------------------------------------|---|
| 2016/50 | <p>The Local Traffic Committee recommends that Council approves the regulatory signs, line marking and devices in Gledswood Hills (in the vicinity of Longview Road) as shown on the Engineering Drawing No. TR11-C1-505-AA007442CC Issue 3 and TR11-C1-506-AA007442CC Issue 4 subject to:</p> <ul style="list-style-type: none"> i. Give Way sign (R1-2), TB, TB1 and BB marking at the intersections of Road03/Tarrawara Avenue, Road06/Long View Road and Road02/Long View Avenue being removed; ii. The installation being completed by the applicant at its cost; iii. Street lighting levels for devices being in accordance with Australian Standard AS/NZS 1158, subject to further Council approval of the lighting design; and |



| | |
|--|---|
| | iv. Speed zoning and speed limits signage plan being referred to Roads and Maritime Services (RMS) for review and approval. |
|--|---|

This recommendation was supported unanimously by the four voting members.

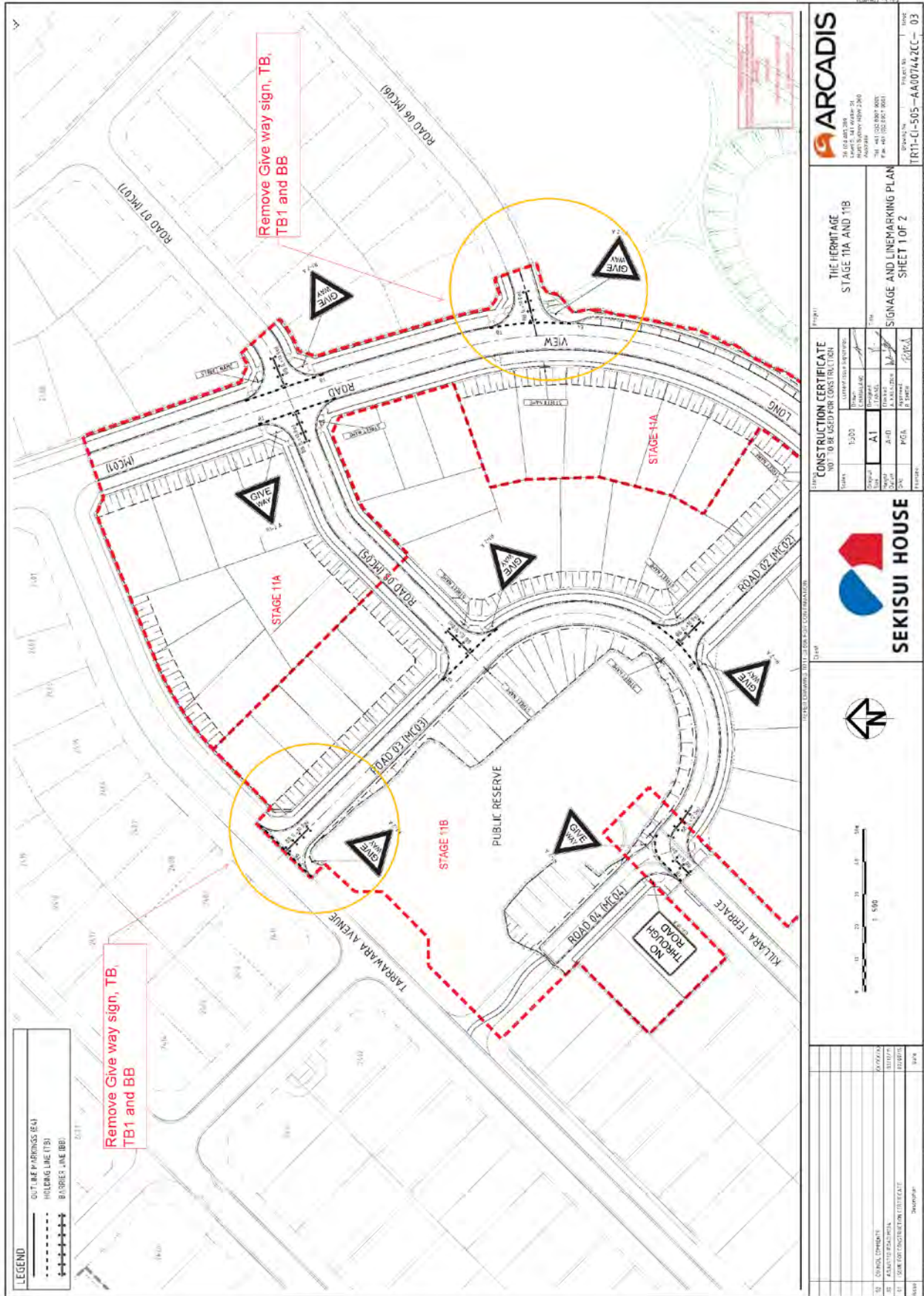
This recommendation has been resolved by a Council Officer under Delegated Authority.

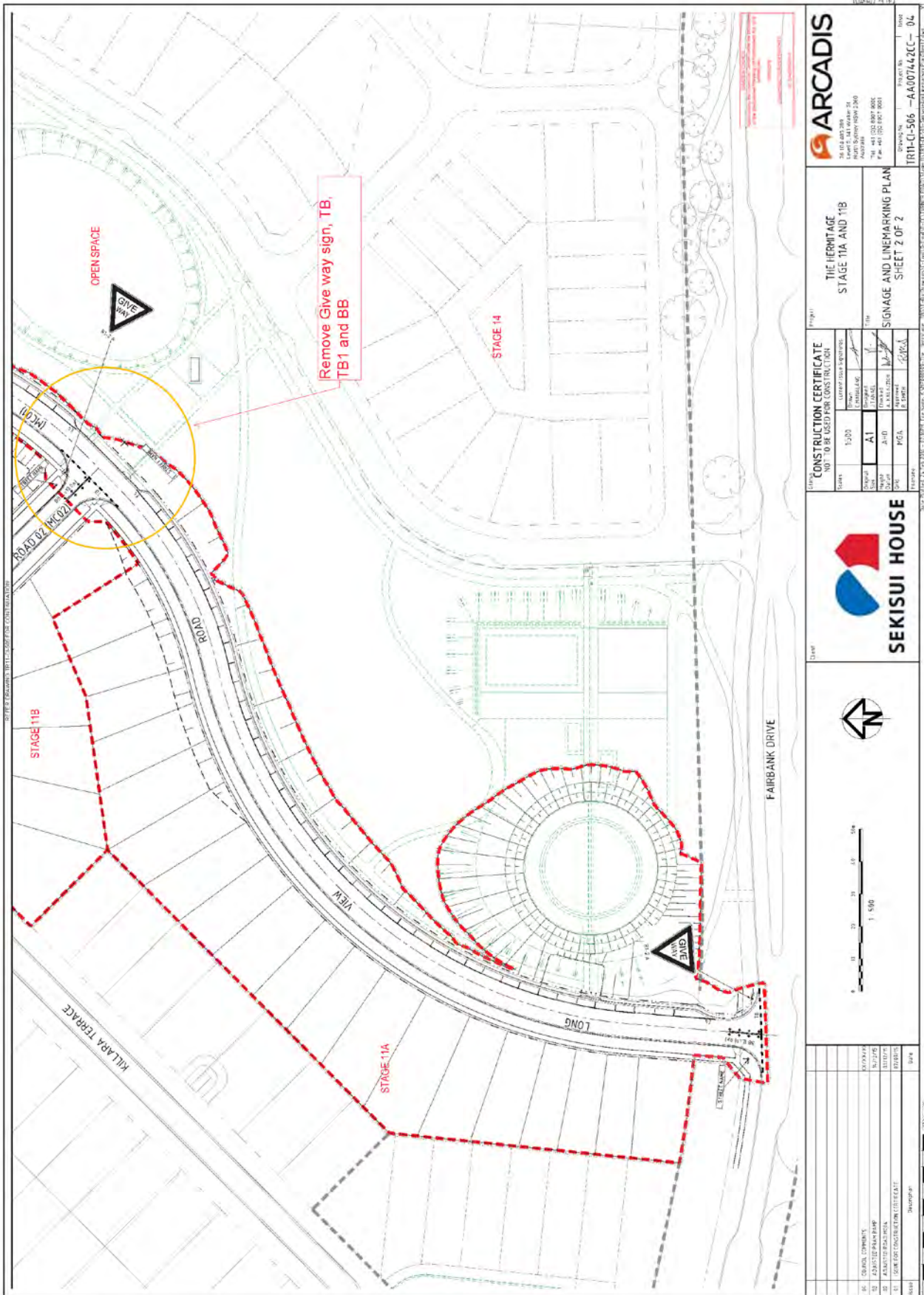
RECOMMENDED

That Council receives and notes the report.

ATTACHMENTS

1. Locality Plan - Longview Road, Gledswood Hills - Signage, Linemarking and Devices
2. Engineering Drawings - Longview Road, Gledswood Hills - Signage, Linemarking and Devices







LOCAL TRAFFIC COMMITTEE

LTC17

**SUBJECT: EMERALD HILLS DRIVE, LEPPINGTON - EMERALD HILLS ESTATE
SIGNAGE LINEMARKING AND DEVICES**

FROM: Manager Infrastructure Planning

TRIM #: 16/315015

ELECTRONIC MEETING ITEM DATE: 14 September 2016

PURPOSE OF REPORT

To document concurrence previously provided by the Local Traffic Committee through an Electronic Meeting for the construction of new roads associated with the development of Emerald Hills Estate.

MAIN REPORT

Signage and line marking plans have been received by Council for the construction of new roads associated with the development of Emerald Hills Estate. The location is highlighted on **Attachment 1**. This relates to the development of 1150 Camden Valley Way, Leppington (DA/2014/1048).

The Engineering Drawing No. NA50613004-025-CI-1080 Revision 6 prepared by Cardno, provides details of the proposed signage and line marking (**Attachment 2**). The plans are considered to be in accordance with Austroads, Australian Standards and RMS supplements for the placement of regulatory signage and line marking.

| Electronic Meeting Reference | Agreed recommendation of the Local Traffic Committee |
|------------------------------|--|
| 2016/51 | <p>The Local Traffic Committee recommends that Council approves the regulatory signs, line marking and devices in Emerald Hills (in the vicinity of Raby Road) as shown on the Engineering Drawing No. NA50613004-025-CI-1080 Revision 6 subject to:</p> <ul style="list-style-type: none"> i. The installation being completed by the applicant at its cost; ii. All signage being size A; iii. Street lighting levels for devices being in accordance with Australian Standard AS/NZS 1158, subject to further Council approval of the lighting design; and iv. Speed zoning and speed limits signage plan be referred to Roads and Maritime Services (RMS) for review and approval. |

This recommendation was supported unanimously by the four voting members.

This recommendation has been resolved by a Council Officer under Delegated Authority.

RECOMMENDED

That Council receives and notes the report.

ATTACHMENTS

1. Locality Plan - Emerald Hills Estate - Signage, Linemarking and Devices
2. Engineering Drawing - Emerald Hills Estate - Signage, Linemarking and Devices



Camden Valley Way

Raby Road



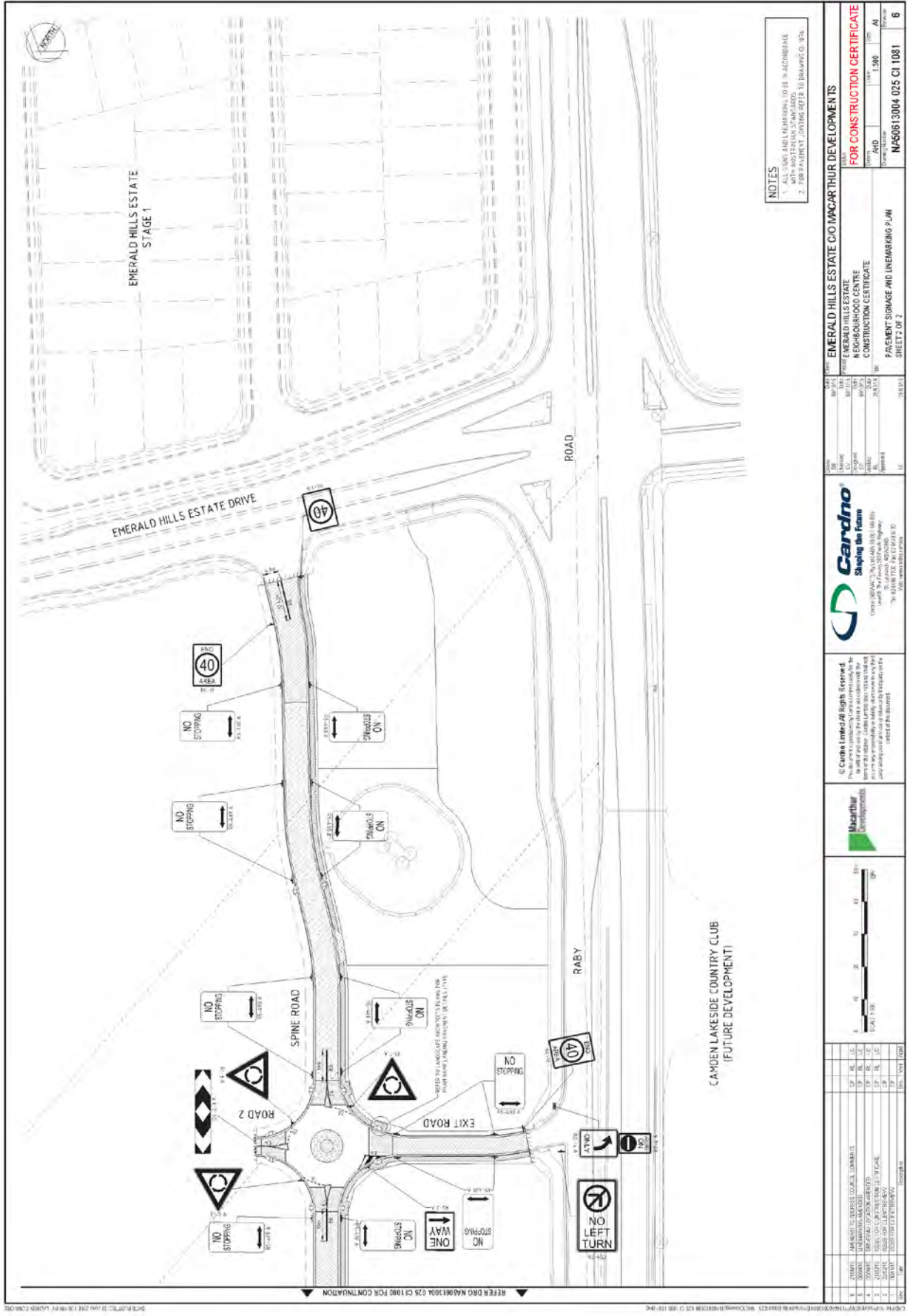
Emerald Hills Estate- 1150 Camden Valley Way, Leppington

Scale 1:4300
Printed Date: 14/09/16



This map has been prepared from Council records by the Land Information section. If you intend to rely on this information you should have this verified.

Camden Council accepts no responsibility for any errors or omissions. This map should not be reproduced without the permission of Camden Council.



LOCAL TRAFFIC COMMITTEE

LTC18

SUBJECT: PETER BROCK DRIVE, ORAN PARK - SIGNAGE, LINEMARKING AND DEVICES BETWEEN ORAN PARK DRIVE AND SOUTH CIRCUIT (EAST)
FROM: Manager Infrastructure Planning
TRIM #: 16/314093

ELECTRONIC MEETING ITEM DATE: 15 September 2016

PURPOSE OF REPORT

To document concurrence previously provided by the Local Traffic Committee through an Electronic Meeting for the construction of new roads associated with the development of Oran Park.

MAIN REPORT

Signage, line marking and devices plans have been received by Council for the construction of new roads associated with the development of Oran Park Town Centre. The location is highlighted on **Attachment 1**. The Engineering Drawing No. 701 Rev 1, Drawing No. 702 Rev 1, Drawing No. 703 Rev 1 and Drawing No. 704 Rev 1, prepared by Calibre Consulting provides details of the proposed signage, line marking and devices (**Attachment 1**). The plans are considered to be in accordance with Austroads, Australian Standards and RMS supplements for the placement of regulatory signage and line marking. In addition Council has required Bus Zone signs (R5-20) to be provided as per marked up plans.

It should be noted that the Peter Brock Drive / Central Avenue intersection and Peter Brock Drive / South Circuit intersection are planned to be signalised in the near future. Therefore signage and marking proposed at these intersections, directly associated with the traffic signals, will be approved through the traffic signal approval process.

| Electronic Meeting Reference | Agreed recommendation of the Local Traffic Committee |
|-------------------------------------|--|
| 2016/52 | <p>The Local Traffic Committee recommends that Council approves the regulatory signs, line marking and devices on Peter Brock Drive and Oran Park Drive as shown on the Engineering Drawing No. 701 Rev 1, Drawing No. 702 Rev 1, Drawing No. 703 Rev 1 and Drawing No. 704 Rev 1, subject to:</p> <ul style="list-style-type: none"> i. Bus Zone signs (R5-20) being installed on Peter Brock Drive as per marked up plan; ii. The installation being completed by the applicant at its cost; iii. All signage being size A; iv. Street lighting levels for devices being in accordance with Australian Standard AS/NZS 1158, subject to further Council approval of the lighting design; and |



| | |
|--|---|
| | v. Speed zoning and speed limits signage plan be referred to Roads and Maritime Services (RMS) for review and approval. |
|--|---|

This recommendation was supported unanimously by the four voting members.

This recommendation has been resolved by a Council Officer under Delegated Authority.

RECOMMENDED

That Council receives and notes the report.

ATTACHMENTS

1. Locality Plan and Engineering Drawings - Peter Brock Drive, Oran Park - Signage, Linemarking and Devices



ORAN PARK ESTATE MAJOR WORKS

FOR GREENFIELDS DEVELOPMENT COMPANY



DRAWING LIST

| NO. | DRAWING TITLE |
|-----|---------------|
| 001 | GENERAL |
| 002 | GENERAL |
| 003 | GENERAL |
| 004 | GENERAL |
| 005 | GENERAL |
| 006 | GENERAL |
| 007 | GENERAL |
| 008 | GENERAL |
| 009 | GENERAL |
| 010 | GENERAL |
| 011 | GENERAL |
| 012 | GENERAL |
| 013 | GENERAL |
| 014 | GENERAL |
| 015 | GENERAL |
| 016 | GENERAL |
| 017 | GENERAL |
| 018 | GENERAL |
| 019 | GENERAL |
| 020 | GENERAL |
| 021 | GENERAL |
| 022 | GENERAL |
| 023 | GENERAL |
| 024 | GENERAL |
| 025 | GENERAL |
| 026 | GENERAL |
| 027 | GENERAL |
| 028 | GENERAL |
| 029 | GENERAL |
| 030 | GENERAL |
| 031 | GENERAL |
| 032 | GENERAL |
| 033 | GENERAL |
| 034 | GENERAL |
| 035 | GENERAL |
| 036 | GENERAL |
| 037 | GENERAL |
| 038 | GENERAL |
| 039 | GENERAL |
| 040 | GENERAL |
| 041 | GENERAL |
| 042 | GENERAL |
| 043 | GENERAL |
| 044 | GENERAL |
| 045 | GENERAL |
| 046 | GENERAL |
| 047 | GENERAL |
| 048 | GENERAL |
| 049 | GENERAL |
| 050 | GENERAL |
| 051 | GENERAL |
| 052 | GENERAL |
| 053 | GENERAL |
| 054 | GENERAL |
| 055 | GENERAL |
| 056 | GENERAL |
| 057 | GENERAL |
| 058 | GENERAL |
| 059 | GENERAL |
| 060 | GENERAL |
| 061 | GENERAL |
| 062 | GENERAL |
| 063 | GENERAL |
| 064 | GENERAL |
| 065 | GENERAL |
| 066 | GENERAL |
| 067 | GENERAL |
| 068 | GENERAL |
| 069 | GENERAL |
| 070 | GENERAL |
| 071 | GENERAL |
| 072 | GENERAL |
| 073 | GENERAL |
| 074 | GENERAL |
| 075 | GENERAL |
| 076 | GENERAL |
| 077 | GENERAL |
| 078 | GENERAL |
| 079 | GENERAL |
| 080 | GENERAL |
| 081 | GENERAL |
| 082 | GENERAL |
| 083 | GENERAL |
| 084 | GENERAL |
| 085 | GENERAL |
| 086 | GENERAL |
| 087 | GENERAL |
| 088 | GENERAL |
| 089 | GENERAL |
| 090 | GENERAL |
| 091 | GENERAL |
| 092 | GENERAL |
| 093 | GENERAL |
| 094 | GENERAL |
| 095 | GENERAL |
| 096 | GENERAL |
| 097 | GENERAL |
| 098 | GENERAL |
| 099 | GENERAL |
| 100 | GENERAL |



ORAN PARK
ESTATE MAJOR WORKS

Project No: L06002.166
Scale: DA
Issue Date: 25/09/2016
Drawing No: 000
Revision: 1



| <p>Project No: L8802.188</p> <p>Sheet No: SHEET LAYOUT PLAN</p> <p>Scale: 1:1000</p> <p>Author: [Name]</p> <p>Checked: [Name]</p> <p>Drawn: [Name]</p> <p>Date: [Date]</p> | | | | | | | |
|---|----------|-------------------|------|-------------|---|----------|-------------------|
| <p>calibre CONSULTING</p> <p>www.calibreconsulting.com.au</p> | | | | | | | |
| <p>GREENFIELDS Development Company</p> <p>ORAN PARK ESTATE MAJOR WORKS</p> | | | | | | | |
| <p>Checked by: [Name]</p> <p>Drawn by: [Name]</p> <p>Scale: 1:1000</p> | | | | | | | |
| <p>ALL DIMENSIONS TO BE CHECKED ON SITE BY CONTRACTOR TO BE CONFORMANT WITH THE DIMENSIONS SHOWN ON THIS PLAN UNLESS OTHERWISE STATED BY CERTAIN NOTES OR SPECIFICATIONS. ALL DIMENSIONS TO BE TO THE CENTRE UNLESS OTHERWISE STATED.</p> | | | | | | | |
| <p>DESIGNED BY: REECE STICHTER REECE STICHTER ENGINEER No. 10174 (NSW)</p> | | | | | | | |
| <p>Revision Details</p> <table border="1"> <thead> <tr> <th>No.</th> <th>Date</th> <th>Description</th> </tr> </thead> <tbody> <tr> <td>1</td> <td>15/11/16</td> <td>ISSUE FOR TENDERS</td> </tr> </tbody> </table> | | No. | Date | Description | 1 | 15/11/16 | ISSUE FOR TENDERS |
| No. | Date | Description | | | | | |
| 1 | 15/11/16 | ISSUE FOR TENDERS | | | | | |

GENERAL NOTES

GENERAL

01. ALL WORK TO BE CARRIED OUT IN ACCORDANCE WITH COUNCIL CITY COUNCIL'S ENGINEERING DESIGN AND ENGINEERING CONSULTING INSTRUCTIONS AND TO THE REQUIREMENTS OF THE COUNCIL'S AUTHORITY OFFICER OR AS AUTHORIZED BY FEELABLEY'S CONSENT.
02. NO TRENCHES TO BE REPAIRED UNLESS APPROVED BY COUNCIL'S INSPECTOR.
03. ALL WORK TO BE CARRIED OUT IN ACCORDANCE WITH COUNCIL'S ENGINEERING DESIGN AND ENGINEERING CONSULTING INSTRUCTIONS AND TO THE REQUIREMENTS OF THE COUNCIL'S AUTHORITY OFFICER OR AS AUTHORIZED BY FEELABLEY'S CONSENT.
04. ALL TRENCHES, BENCHES AND LINES TO BE MAINTAINED AT ALL TIMES TO AVOID PROPERTIES AFFECTED BY CONSTRUCTION.
05. ALL TRENCHES, BENCHES AND LINES TO BE MAINTAINED AT ALL TIMES TO AVOID PROPERTIES AFFECTED BY CONSTRUCTION.
06. COUNCIL ENGINEERS HAVE CONSIDERED THE REQUIREMENTS OF THE LOCAL TRAFFIC COMMITTEE.
07. COUNCIL ENGINEERS HAVE CONSIDERED THE REQUIREMENTS OF THE LOCAL TRAFFIC COMMITTEE.

ROADWORKS

- R1. ROADWORKS AND LINEMARKING SHALL COMPLY WITH THE LOCAL TRAFFIC CONTROL DEVICES FOR GENERAL USE, RAISED REFLECTIVE PAVEMENT MARKINGS TO ONE (1) M TO 1.5 M TO BE REFLECTIVE. MATERIALS AND METHODS FOR ROAD TRAFFIC CONTROL DEVICES SHALL BE AS PER THE LOCAL TRAFFIC COMMITTEE'S REQUIREMENTS.
- R2. ALL ROADWORKS SHALL BE CARRIED OUT IN ACCORDANCE WITH THE LOCAL TRAFFIC COMMITTEE'S REQUIREMENTS.

LINE MARKING LEGEND

| LINE TYPE | USE | FOR DIMENSIONS SHOWN - SEE DIMENSIONING COLUMN | BASED ON DIMENSIONS SHOWN - SEE DIMENSIONING COLUMN | MARKER SPACING (M) NOMINAL SPACING (M) ALTERNATIVE SPACING (M) |
|-----------|---|--|---|--|
| E1 | PAVEMENT MARKING FOR ROAD TRAFFIC CONTROL DEVICES | | | 1.5 |
| E2 | PAVEMENT MARKING FOR ROAD TRAFFIC CONTROL DEVICES | | | 1.5 |
| E3 | PAVEMENT MARKING FOR ROAD TRAFFIC CONTROL DEVICES | | | 1.5 |
| E4 | PAVEMENT MARKING FOR ROAD TRAFFIC CONTROL DEVICES | | | 1.5 |
| E5 | PAVEMENT MARKING FOR ROAD TRAFFIC CONTROL DEVICES | | | 1.5 |

FUTURE LINE MARKING LEGEND

| | | | | |
|----|---|--|--|-----|
| F1 | PAVEMENT MARKING FOR ROAD TRAFFIC CONTROL DEVICES | | | 1.5 |
| F2 | PAVEMENT MARKING FOR ROAD TRAFFIC CONTROL DEVICES | | | 1.5 |
| F3 | PAVEMENT MARKING FOR ROAD TRAFFIC CONTROL DEVICES | | | 1.5 |

LEGEND

| DESCRIPTION | PROPOSED | EXISTING | FUTURE |
|---|----------|----------|--------|
| STOP WATER PIPELINE | | | |
| STOP WATER PIPELINE WITH DRAINAGE (1 IN 1%) | | | |
| CONCRETE HEADWALL | | | |
| SUBSOIL DRAIN | | | |
| 100MM DIA AND OUTER | | | |
| 200MM DIA AND OUTER | | | |
| WATER ONLY | | | |
| EDGE STRIP | | | |
| MOUNTAIN KERN | | | |
| DESI CROSSING | | | |
| RECEPTION RAMP | | | |
| EDGE OF STUBBLE | | | |
| ROAD PAVEMENT | | | |
| BENCH MARK | | | |
| BATTERS | | | |
| CONCRETE DRIVEWAY | | | |
| COURTIERS | | | |
| SITE SEPARATION AREA | | | |
| SEWER LINES | | | |
| SEWER GAS WATER | | | |
| ELECTRICITY, RECYCLED WATER | | | |
| COMMUNICATION LINES | | | |
| TELEVISION, FIBRE OPTIC, NEW | | | |
| OVERHEAD LINES AND PIPES | | | |
| SEWERAGE PIPE | | | |
| TELEPHONE, ACCESS CHAMBER | | | |
| HYDRANT STOP VALVE, AIR VALVE | | | |
| LIMIT OF ROAD CONSTRUCTION | | | |
| LIMIT OF SITE | | | |
| FENCE | | | |
| SECURITY FENCE | | | |
| LOT MARKERS | | | |
| TREES TO REMAIN WITHIN SITE | | | |
| REPAIRING WALL | | | |
| ROCK WALL | | | |
| ROOF WATER OUTLET TO KERB | | | |
| ROOF WATER OUTLET TO BACK OF PIT | | | |

GENERAL NOTES AND LEGEND

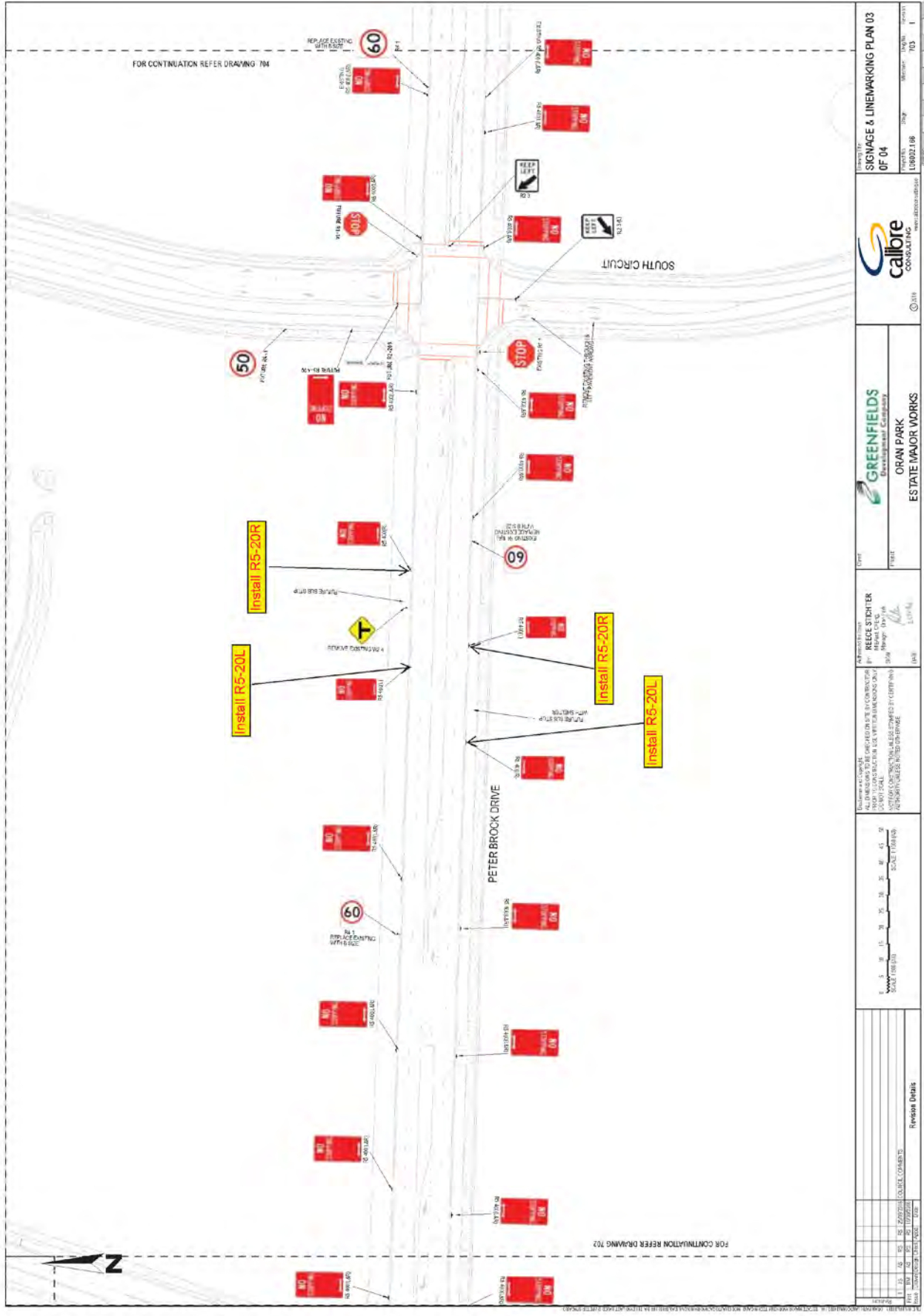
Project: ORAN PARK ESTATE MAJOR WORKS
 Date: 15/11/2016
 Drawn: [Name]
 Checked: [Name]

GREENFIELDS CONSULTING
 Environmental & Civil Engineers

ORAN PARK ESTATE MAJOR WORKS

RECEIPT
 RECEIVED BY: [Name]
 DATE: [Date]





| | | | |
|---|--|---|--|
| <p>GREENFIELDS Developmental Company</p> <p>ORAN PARK ESTATE MAJOR WORKS</p> | | <p>calibre CONSULTING</p> | |
| <p>Project: L8002188</p> | | <p>Sheet: SIGNAGE & LINEMARKING PLAN 03 OF 04</p> | |
| <p>Client: GREENFIELDS Developmental Company</p> | | <p>Author: REECE STECHER</p> | |
| <p>Scale: 1:100</p> | | <p>Check: [Signature]</p> | |
| <p>Notes: ALL DIMENSIONS TO BE CHECKED ON SITE BY CONTRACTOR. DIMENSIONS TO BE CHECKED ON SITE BY CONTRACTOR. DIMENSIONS TO BE CHECKED ON SITE BY CONTRACTOR. DIMENSIONS TO BE CHECKED ON SITE BY CONTRACTOR.</p> | | <p>Scale: 0 5 10 15 20 25 30 35 40 45 50 METRES</p> | |
| <p>Revision Details</p> | | <p>Scale: 1:100</p> | |



LOCAL TRAFFIC COMMITTEE

LTC19

**SUBJECT: ORAN PARK SOUTH DEVELOPMENT TRANCHE 31 STAGE 2 -
SIGNAGE, LINEMARKING AND DEVICES**

FROM: Manager Infrastructure Planning

TRIM #: 16/316542

ELECTRONIC MEETING ITEM DATE: 10 October 2016

PURPOSE OF REPORT

To document concurrence previously provided by the Local Traffic Committee through an Electronic Meeting for the construction of new roads associated with the development of Oran Park South.

MAIN REPORT

Signage and line marking plans have been received by Council for the construction of new roads associated with the development of Oran Park South. This is related to DA number 2015/1197. The location is highlighted on **Attachment 1**.

The Engineering Drawing No. 702 Revision 0 prepared by Calibre Consulting, provides details of the proposed signage and line marking (**Attachment 2**). The plans are considered to be in accordance with Austroads, Australian Standards and RMS supplements for the placement of regulatory signage and line marking.

| Electronic Meeting Reference | Agreed recommendation of the Local Traffic Committee |
|-------------------------------------|---|
| 2016/53 | <p>The Local Traffic Committee recommends that Council approves the regulatory signs, line marking and devices associated with Oran Park South development east of Oran Park Drive and south of South Circuit as shown on the Engineering Drawing No. 702, Rev. 0 subject to:</p> <ul style="list-style-type: none"> i. The installation being completed by the applicant at its cost; ii. All signage being size A; and iii. Street lighting levels for devices being in accordance with Australian Standard AS/NZS 1158, subject to further Council approval of the lighting design. |

This recommendation was supported unanimously by the four voting members.

This recommendation has been resolved by a Council Officer under Delegated Authority.

RECOMMENDED

That Council receives and notes the report.

ATTACHMENTS

1. Locality Plan - Oran Park South Development - Signage, Linemarking and Devices
2. Engineering Drawing - Oran Park South Development - Signage, Linemarking and Devices



ORAN PARK SOUTH DEVELOPMENT

TRANCHE 31 STAGE 2

FOR CONSTRUCTION CERTIFICATE

Sheet List Table

NO DRAWING TITLE

| | |
|-----|---------|
| 101 | GENERAL |
| 102 | GENERAL |
| 103 | GENERAL |
| 104 | GENERAL |
| 105 | GENERAL |
| 106 | GENERAL |
| 107 | GENERAL |
| 108 | GENERAL |
| 109 | GENERAL |
| 110 | GENERAL |
| 111 | GENERAL |
| 112 | GENERAL |
| 113 | GENERAL |
| 114 | GENERAL |
| 115 | GENERAL |
| 116 | GENERAL |
| 117 | GENERAL |
| 118 | GENERAL |
| 119 | GENERAL |
| 120 | GENERAL |
| 121 | GENERAL |
| 122 | GENERAL |
| 123 | GENERAL |
| 124 | GENERAL |
| 125 | GENERAL |
| 126 | GENERAL |
| 127 | GENERAL |
| 128 | GENERAL |
| 129 | GENERAL |
| 130 | GENERAL |
| 131 | GENERAL |
| 132 | GENERAL |
| 133 | GENERAL |
| 134 | GENERAL |
| 135 | GENERAL |
| 136 | GENERAL |
| 137 | GENERAL |
| 138 | GENERAL |
| 139 | GENERAL |
| 140 | GENERAL |
| 141 | GENERAL |
| 142 | GENERAL |
| 143 | GENERAL |
| 144 | GENERAL |
| 145 | GENERAL |
| 146 | GENERAL |
| 147 | GENERAL |
| 148 | GENERAL |
| 149 | GENERAL |
| 150 | GENERAL |
| 151 | GENERAL |
| 152 | GENERAL |
| 153 | GENERAL |
| 154 | GENERAL |
| 155 | GENERAL |
| 156 | GENERAL |
| 157 | GENERAL |
| 158 | GENERAL |
| 159 | GENERAL |
| 160 | GENERAL |
| 161 | GENERAL |
| 162 | GENERAL |
| 163 | GENERAL |
| 164 | GENERAL |
| 165 | GENERAL |
| 166 | GENERAL |
| 167 | GENERAL |
| 168 | GENERAL |
| 169 | GENERAL |
| 170 | GENERAL |
| 171 | GENERAL |
| 172 | GENERAL |
| 173 | GENERAL |
| 174 | GENERAL |
| 175 | GENERAL |
| 176 | GENERAL |
| 177 | GENERAL |
| 178 | GENERAL |
| 179 | GENERAL |
| 180 | GENERAL |
| 181 | GENERAL |
| 182 | GENERAL |
| 183 | GENERAL |
| 184 | GENERAL |
| 185 | GENERAL |
| 186 | GENERAL |
| 187 | GENERAL |
| 188 | GENERAL |
| 189 | GENERAL |
| 190 | GENERAL |
| 191 | GENERAL |
| 192 | GENERAL |
| 193 | GENERAL |
| 194 | GENERAL |
| 195 | GENERAL |
| 196 | GENERAL |
| 197 | GENERAL |
| 198 | GENERAL |
| 199 | GENERAL |
| 200 | GENERAL |
| 201 | GENERAL |
| 202 | GENERAL |
| 203 | GENERAL |
| 204 | GENERAL |
| 205 | GENERAL |
| 206 | GENERAL |
| 207 | GENERAL |
| 208 | GENERAL |
| 209 | GENERAL |
| 210 | GENERAL |
| 211 | GENERAL |
| 212 | GENERAL |
| 213 | GENERAL |
| 214 | GENERAL |
| 215 | GENERAL |
| 216 | GENERAL |
| 217 | GENERAL |
| 218 | GENERAL |
| 219 | GENERAL |
| 220 | GENERAL |
| 221 | GENERAL |
| 222 | GENERAL |
| 223 | GENERAL |
| 224 | GENERAL |
| 225 | GENERAL |
| 226 | GENERAL |
| 227 | GENERAL |
| 228 | GENERAL |
| 229 | GENERAL |
| 230 | GENERAL |
| 231 | GENERAL |
| 232 | GENERAL |
| 233 | GENERAL |
| 234 | GENERAL |
| 235 | GENERAL |
| 236 | GENERAL |
| 237 | GENERAL |
| 238 | GENERAL |
| 239 | GENERAL |
| 240 | GENERAL |
| 241 | GENERAL |
| 242 | GENERAL |
| 243 | GENERAL |
| 244 | GENERAL |
| 245 | GENERAL |
| 246 | GENERAL |
| 247 | GENERAL |
| 248 | GENERAL |
| 249 | GENERAL |
| 250 | GENERAL |
| 251 | GENERAL |
| 252 | GENERAL |
| 253 | GENERAL |
| 254 | GENERAL |
| 255 | GENERAL |
| 256 | GENERAL |
| 257 | GENERAL |
| 258 | GENERAL |
| 259 | GENERAL |
| 260 | GENERAL |
| 261 | GENERAL |
| 262 | GENERAL |
| 263 | GENERAL |
| 264 | GENERAL |
| 265 | GENERAL |
| 266 | GENERAL |
| 267 | GENERAL |
| 268 | GENERAL |
| 269 | GENERAL |
| 270 | GENERAL |
| 271 | GENERAL |
| 272 | GENERAL |
| 273 | GENERAL |
| 274 | GENERAL |
| 275 | GENERAL |
| 276 | GENERAL |
| 277 | GENERAL |
| 278 | GENERAL |
| 279 | GENERAL |
| 280 | GENERAL |
| 281 | GENERAL |
| 282 | GENERAL |
| 283 | GENERAL |
| 284 | GENERAL |
| 285 | GENERAL |
| 286 | GENERAL |
| 287 | GENERAL |
| 288 | GENERAL |
| 289 | GENERAL |
| 290 | GENERAL |
| 291 | GENERAL |
| 292 | GENERAL |
| 293 | GENERAL |
| 294 | GENERAL |
| 295 | GENERAL |
| 296 | GENERAL |
| 297 | GENERAL |
| 298 | GENERAL |
| 299 | GENERAL |
| 300 | GENERAL |
| 301 | GENERAL |
| 302 | GENERAL |
| 303 | GENERAL |
| 304 | GENERAL |
| 305 | GENERAL |
| 306 | GENERAL |
| 307 | GENERAL |
| 308 | GENERAL |
| 309 | GENERAL |
| 310 | GENERAL |
| 311 | GENERAL |
| 312 | GENERAL |
| 313 | GENERAL |
| 314 | GENERAL |
| 315 | GENERAL |
| 316 | GENERAL |
| 317 | GENERAL |
| 318 | GENERAL |
| 319 | GENERAL |
| 320 | GENERAL |
| 321 | GENERAL |
| 322 | GENERAL |
| 323 | GENERAL |
| 324 | GENERAL |
| 325 | GENERAL |
| 326 | GENERAL |
| 327 | GENERAL |
| 328 | GENERAL |
| 329 | GENERAL |
| 330 | GENERAL |
| 331 | GENERAL |
| 332 | GENERAL |
| 333 | GENERAL |
| 334 | GENERAL |
| 335 | GENERAL |
| 336 | GENERAL |
| 337 | GENERAL |
| 338 | GENERAL |
| 339 | GENERAL |
| 340 | GENERAL |
| 341 | GENERAL |
| 342 | GENERAL |
| 343 | GENERAL |
| 344 | GENERAL |
| 345 | GENERAL |
| 346 | GENERAL |
| 347 | GENERAL |
| 348 | GENERAL |
| 349 | GENERAL |
| 350 | GENERAL |
| 351 | GENERAL |
| 352 | GENERAL |
| 353 | GENERAL |
| 354 | GENERAL |
| 355 | GENERAL |
| 356 | GENERAL |
| 357 | GENERAL |
| 358 | GENERAL |
| 359 | GENERAL |
| 360 | GENERAL |
| 361 | GENERAL |
| 362 | GENERAL |
| 363 | GENERAL |
| 364 | GENERAL |
| 365 | GENERAL |
| 366 | GENERAL |
| 367 | GENERAL |
| 368 | GENERAL |
| 369 | GENERAL |
| 370 | GENERAL |
| 371 | GENERAL |
| 372 | GENERAL |
| 373 | GENERAL |
| 374 | GENERAL |
| 375 | GENERAL |
| 376 | GENERAL |
| 377 | GENERAL |
| 378 | GENERAL |
| 379 | GENERAL |
| 380 | GENERAL |
| 381 | GENERAL |
| 382 | GENERAL |
| 383 | GENERAL |
| 384 | GENERAL |
| 385 | GENERAL |
| 386 | GENERAL |
| 387 | GENERAL |
| 388 | GENERAL |
| 389 | GENERAL |
| 390 | GENERAL |
| 391 | GENERAL |
| 392 | GENERAL |
| 393 | GENERAL |
| 394 | GENERAL |
| 395 | GENERAL |
| 396 | GENERAL |
| 397 | GENERAL |
| 398 | GENERAL |
| 399 | GENERAL |
| 400 | GENERAL |
| 401 | GENERAL |
| 402 | GENERAL |
| 403 | GENERAL |
| 404 | GENERAL |
| 405 | GENERAL |
| 406 | GENERAL |
| 407 | GENERAL |
| 408 | GENERAL |
| 409 | GENERAL |
| 410 | GENERAL |
| 411 | GENERAL |
| 412 | GENERAL |
| 413 | GENERAL |
| 414 | GENERAL |
| 415 | GENERAL |
| 416 | GENERAL |
| 417 | GENERAL |
| 418 | GENERAL |
| 419 | GENERAL |
| 420 | GENERAL |
| 421 | GENERAL |
| 422 | GENERAL |
| 423 | GENERAL |
| 424 | GENERAL |
| 425 | GENERAL |
| 426 | GENERAL |
| 427 | GENERAL |
| 428 | GENERAL |
| 429 | GENERAL |
| 430 | GENERAL |
| 431 | GENERAL |
| 432 | GENERAL |
| 433 | GENERAL |
| 434 | GENERAL |
| 435 | GENERAL |
| 436 | GENERAL |
| 437 | GENERAL |
| 438 | GENERAL |
| 439 | GENERAL |
| 440 | GENERAL |
| 441 | GENERAL |
| 442 | GENERAL |
| 443 | GENERAL |
| 444 | GENERAL |
| 445 | GENERAL |
| 446 | GENERAL |
| 447 | GENERAL |
| 448 | GENERAL |
| 449 | GENERAL |
| 450 | GENERAL |
| 451 | GENERAL |
| 452 | GENERAL |
| 453 | GENERAL |
| 454 | GENERAL |
| 455 | GENERAL |
| 456 | GENERAL |
| 457 | GENERAL |
| 458 | GENERAL |
| 459 | GENERAL |
| 460 | GENERAL |
| 461 | GENERAL |
| 462 | GENERAL |
| 463 | GENERAL |
| 464 | GENERAL |
| 465 | GENERAL |
| 466 | GENERAL |
| 467 | GENERAL |
| 468 | GENERAL |
| 469 | GENERAL |
| 470 | GENERAL |
| 471 | GENERAL |
| 472 | GENERAL |
| 473 | GENERAL |
| 474 | GENERAL |
| 475 | GENERAL |
| 476 | GENERAL |
| 477 | GENERAL |
| 478 | GENERAL |
| 479 | GENERAL |
| 480 | GENERAL |
| 481 | GENERAL |
| 482 | GENERAL |
| 483 | GENERAL |
| 484 | GENERAL |
| 485 | GENERAL |
| 486 | GENERAL |
| 487 | GENERAL |
| 488 | GENERAL |
| 489 | GENERAL |
| 490 | GENERAL |
| 491 | GENERAL |
| 492 | GENERAL |
| 493 | GENERAL |
| 494 | GENERAL |
| 495 | GENERAL |
| 496 | GENERAL |
| 497 | GENERAL |
| 498 | GENERAL |
| 499 | GENERAL |
| 500 | GENERAL |
| 501 | GENERAL |
| 502 | GENERAL |
| 503 | GENERAL |
| 504 | GENERAL |
| 505 | GENERAL |
| 506 | GENERAL |
| 507 | GENERAL |
| 508 | GENERAL |
| 509 | GENERAL |
| 510 | GENERAL |
| 511 | GENERAL |
| 512 | GENERAL |
| 513 | GENERAL |
| 514 | GENERAL |
| 515 | GENERAL |
| 516 | GENERAL |
| 517 | GENERAL |
| 518 | GENERAL |
| 519 | GENERAL |
| 520 | GENERAL |
| 521 | GENERAL |
| 522 | GENERAL |
| 523 | GENERAL |
| 524 | GENERAL |
| 525 | GENERAL |
| 526 | GENERAL |
| 527 | GENERAL |
| 528 | GENERAL |
| 529 | GENERAL |
| 530 | GENERAL |
| 531 | GENERAL |
| 532 | GENERAL |
| 533 | GENERAL |
| 534 | GENERAL |
| 535 | GENERAL |
| 536 | GENERAL |
| 537 | GENERAL |
| 538 | GENERAL |
| 539 | GENERAL |
| 540 | GENERAL |
| 541 | GENERAL |
| 542 | GENERAL |
| 543 | GENERAL |
| 544 | GENERAL |
| 545 | GENERAL |
| 546 | GENERAL |
| 547 | GENERAL |
| 548 | GENERAL |
| 549 | GENERAL |
| 550 | GENERAL |
| 551 | GENERAL |
| 552 | GENERAL |
| 553 | GENERAL |
| 554 | GENERAL |
| 555 | GENERAL |
| 556 | GENERAL |
| 557 | GENERAL |
| 558 | GENERAL |
| 559 | GENERAL |
| 560 | GENERAL |
| 561 | GENERAL |
| 562 | GENERAL |
| 563 | GENERAL |
| 564 | GENERAL |
| 565 | GENERAL |
| 566 | GENERAL |
| 567 | GENERAL |
| 568 | GENERAL |
| 569 | GENERAL |
| 570 | GENERAL |
| 571 | GENERAL |
| 572 | GENERAL |
| 573 | GENERAL |
| 574 | GENERAL |
| 575 | GENERAL |
| 576 | GENERAL |
| 577 | GENERAL |
| 578 | GENERAL |
| 579 | GENERAL |
| 580 | GENERAL |
| 581 | GENERAL |
| 582 | GENERAL |
| 583 | GENERAL |
| 584 | GENERAL |
| 585 | GENERAL |
| 586 | GENERAL |
| 587 | GENERAL |
| 588 | GENERAL |
| 589 | GENERAL |
| 590 | GENERAL |
| 591 | GENERAL |
| 592 | GENERAL |
| 593 | GENERAL |
| 594 | GENERAL |
| 595 | GENERAL |
| 596 | GENERAL |
| 597 | GENERAL |
| 598 | GENERAL |
| 599 | GENERAL |
| 600 | GENERAL |



LGA CAMDEN COUNCIL
LOT 1 D.P. 1215390
D.A. 1197/2015

LOCALITY PLAN
N.T.S.



ORAN PARK SOUTH DEVELOPMENT
TRANCHE 31 STAGE 2

Scale: 1:4340.07
Revision: 2
Project No: CC
Issue Date: 18/08/2016
Drawing No: 000
Sheet No: 0





LOCAL TRAFFIC COMMITTEE

LTC20

**SUBJECT: CREST WAY, BEATTIE STREET AND KERILLIAN STREET,
GLEDSDOOD HILLS - SIGNAGE, LINEMARKING AND DEVICES**

FROM: Manager Infrastructure Planning

TRIM #: 16/313181

ELECTRONIC MEETING ITEM DATE: 17 October 2016

PURPOSE OF REPORT

To document concurrence previously provided by the Local Traffic Committee through an Electronic Meeting for the construction of new roads associated with the development of Gledswood Hills.

MAIN REPORT

Signage and line marking plans have been received by Council for the construction of new roads associated with the development of Gledswood Hills. This is related to DA number 2015/1431. The location is highlighted on **Attachment 1**.

The Engineering Drawing No. 702 Revision 03 prepared by Calibre Consulting, provides details of the proposed signage and line marking (**Attachment 2**). The plans are considered to be in accordance with Austroads, Australian Standards and RMS supplements for the placement of regulatory signage and line marking.

| Electronic Meeting Reference | Agreed recommendation of the Local Traffic Committee |
|------------------------------|---|
| 2016/54 | <p>The Local Traffic Committee recommends that Council approves the regulatory signs, line marking and devices on Crest Way, Beattie Street and Kerillian Street, Gledswood Hill, as shown on the Engineering Drawing No. 702 Revision 03 subject to:</p> <ul style="list-style-type: none"> i. The installation being completed by the applicant at its cost; ii. All signage being size A; and iii. Street lighting levels for devices being in accordance with Australian Standard AS/NZS 1158, subject to further Council approval of the lighting design. |

This recommendation was supported unanimously by the four voting members.

This recommendation has been resolved by a Council Officer under Delegated Authority.

RECOMMENDED

That Council receives and notes the report.

ATTACHMENTS

1. Locality Plan - Crest Way, Beattie Street and Kerillian Street Gledswood Hills - Signage, Linemarking and Devices
2. Engineering Drawing - Crest Way, Beattie Street and Kerillian Street Gledswood Hills - Signage, Linemarking and Devices



GLEDSWOOD VILLAGE STAGE 2 RABY ROAD ROAD DRAINAGE & DESIGN

FOR DEVELOPMENT APPLICATION



LGA CAMDEN COUNCIL
LOT 401, DP 1193327
LOT 3, DP 1193136

LOCALITY PLAN
N.T.S.

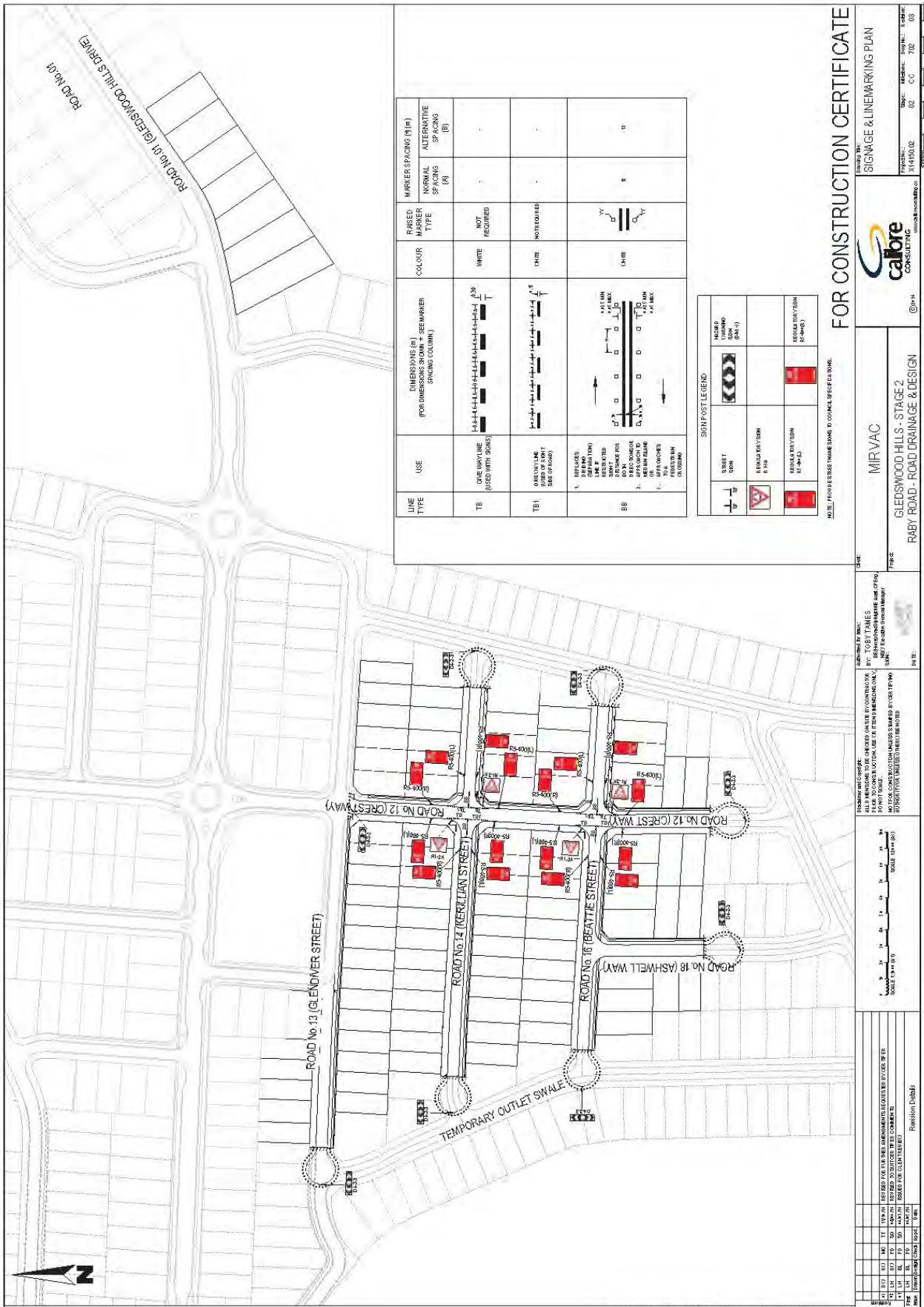


Sheet List Table

| DRAWING TITLE |
|--|
| GENERAL |
| 00 COVER SHEET |
| 01 GENERAL LAYOUT PLAN |
| 02 STANDARD NOTES & LEGEND |
| 101 SEDIMENT & EROSION CONTROL PLAN SHEET 01 OF 02 |
| 102 SEDIMENT & EROSION CONTROL PLAN SHEET 02 OF 02 |
| 103 SEDIMENT & EROSION CONTROL NOTES |
| SITE REGRADING |
| 201 SITE REGRADING PLAN SHEET 01 OF 06 |
| 202 SITE REGRADING PLAN SHEET 02 OF 06 |
| 203 SITE REGRADING PLAN SHEET 03 OF 06 |
| 204 SITE REGRADING PLAN SHEET 04 OF 06 |
| 205 SITE REGRADING PLAN SHEET 05 OF 06 |
| 206 SITE REGRADING SECTIONS 01 OF 05 SHEETS |
| 207 SITE REGRADING SECTIONS 02 OF 05 SHEETS |
| 208 SITE REGRADING SECTIONS 03 OF 05 SHEETS |
| 209 SITE REGRADING SECTIONS 04 OF 05 SHEETS |
| 210 SITE REGRADING SECTIONS 05 OF 05 SHEETS |
| 211 SITE REGRADING SECTIONS 06 OF 05 SHEETS |
| 212 SITE REGRADING SECTIONS 07 OF 05 SHEETS |
| ENGINEERING PLAN |
| 301 ENGINEERING PLAN SHEET 01 OF 06 |
| 302 ENGINEERING PLAN SHEET 02 OF 06 |
| 303 ENGINEERING PLAN SHEET 03 OF 06 |
| 304 ENGINEERING PLAN SHEET 04 OF 06 |
| 305 ENGINEERING PLAN SHEET 05 OF 06 |
| 306 ENGINEERING PLAN SHEET 06 OF 06 |
| ROAD LONGITUDINAL SECTIONS |
| 401 ROAD N°12 LONGITUDINAL SECTION & TYPICAL CROSS SECTION |
| 402 ROAD N°13 LONGITUDINAL SECTION & TYPICAL CROSS SECTION |
| 403 ROAD N°14 LONGITUDINAL SECTION & TYPICAL CROSS SECTION |
| 404 SITE REGRADING SECTIONS 07 OF 07 SHEETS |
| DRAINAGE |
| 503 BASIN N°100 LAYOUT PLAN |
| 501 BASIN N°101 & 102 SECTIONS |
| 502 BASIN N°1 LAYOUT PLAN |
| 504 BASIN N°1 & 101 SECTIONS |
| 505 TYPICAL RETAINING WALL DETAILS |
| 911 RETAINING WALL LONG SECTIONS SHEET 01 OF 02 |
| 912 RETAINING WALL LONG SECTIONS SHEET 02 OF 02 |

GLEDSWOOD VILLAGE STAGE 2
RABY ROAD ROAD DRAINAGE & DESIGN

Project No: X14150.02
Scale: 1:1000
Date: 02 DA 000 04





LOCAL TRAFFIC COMMITTEE

LTC21

SUBJECT: PIONEER STREET, GREGORY HILLS - NO STOPPING RESTRICTIONS

FROM: Manager Infrastructure Planning

TRIM #: 16/313284

ELECTRONIC MEETING ITEM DATE: 17 October 2016

PURPOSE OF REPORT

To document concurrence previously provided by the Local Traffic Committee through an Electronic Meeting for the construction of a section of Pioneer Street associated with the development of residential subdivision at 79 & 85 Turner Road, Gregory Hills.

MAIN REPORT

A signage and line marking plan has been received by Council for the construction of a section of Pioneer Street, associated with the development of a residential subdivision at 79 & 85 Turner Road, Gregory Hills. The location is highlighted on **Attachment 1**.

The Engineering Drawing No. 1775C_CC_451 Revision G, prepared by Craig & Rhodes Consulting provides details of the proposed No Stopping restrictions on the western side of Pioneer Street (**Attachment 2**). This proposal is to comply with the requirement of bush fire prone land. The plan is considered to be in accordance with Austroads, Australian Standards and RMS supplements for the placement of regulatory signage.

| Electronic Meeting Reference | Agreed recommendation of the Local Traffic Committee |
|------------------------------|---|
| 2016/55 | <p>The Local Traffic Committee recommends that Council approves the proposed No Stopping signs (R5-400) on Pioneer Street as shown on Engineering Drawing No. 1775C_CC_451 Revision G subject to:</p> <ul style="list-style-type: none"> i. The installation being completed by the applicant at its cost; ii. All signage being size A; and iii. Street lighting levels for devices being in accordance with Australian Standard AS/NZS 1158, subject to further Council approval of the lighting design. |

This recommendation was supported unanimously by the four voting members.

This recommendation has been resolved by a Council Officer under Delegated Authority.

RECOMMENDED

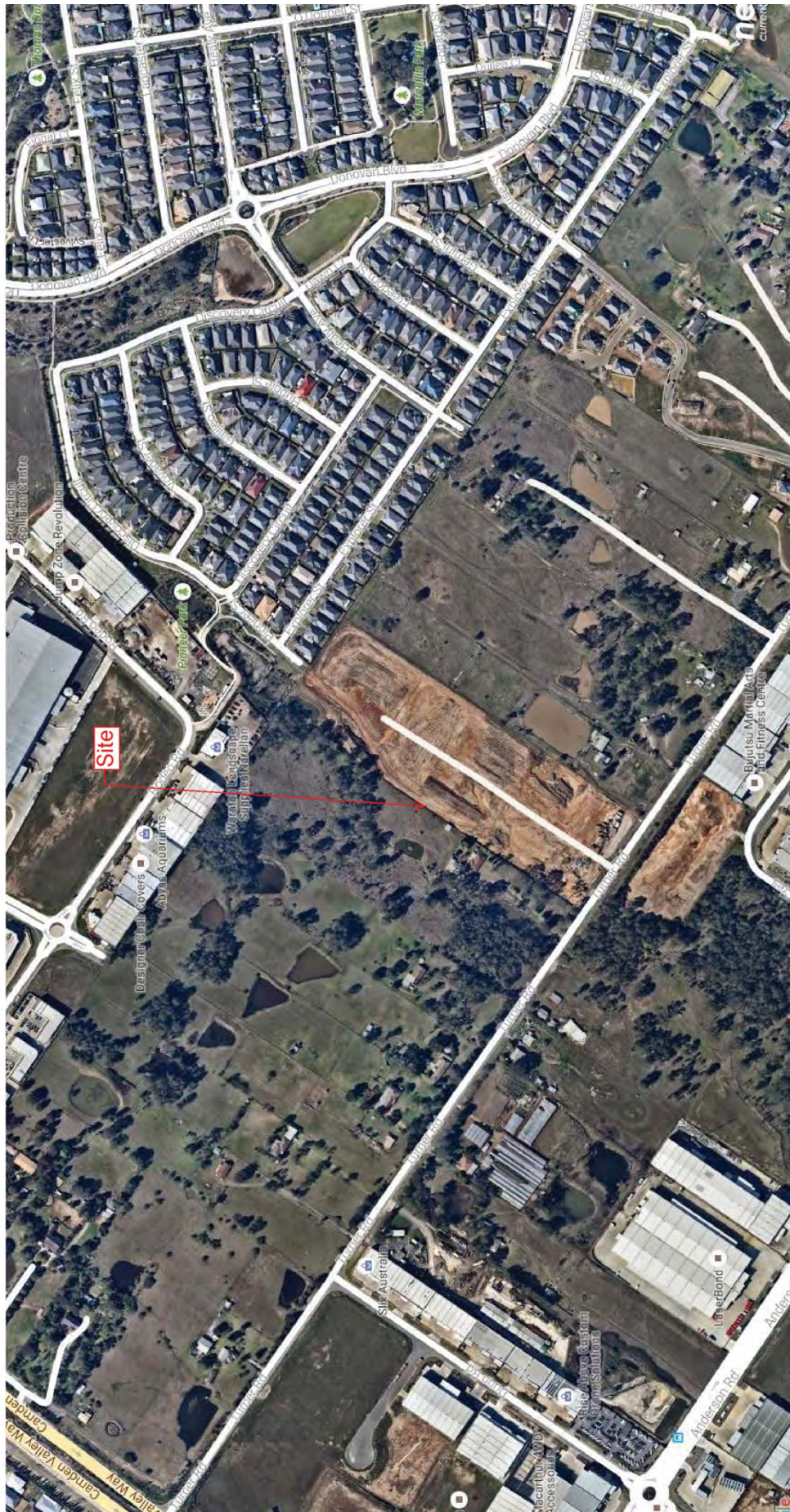
That Council receives and notes the report.

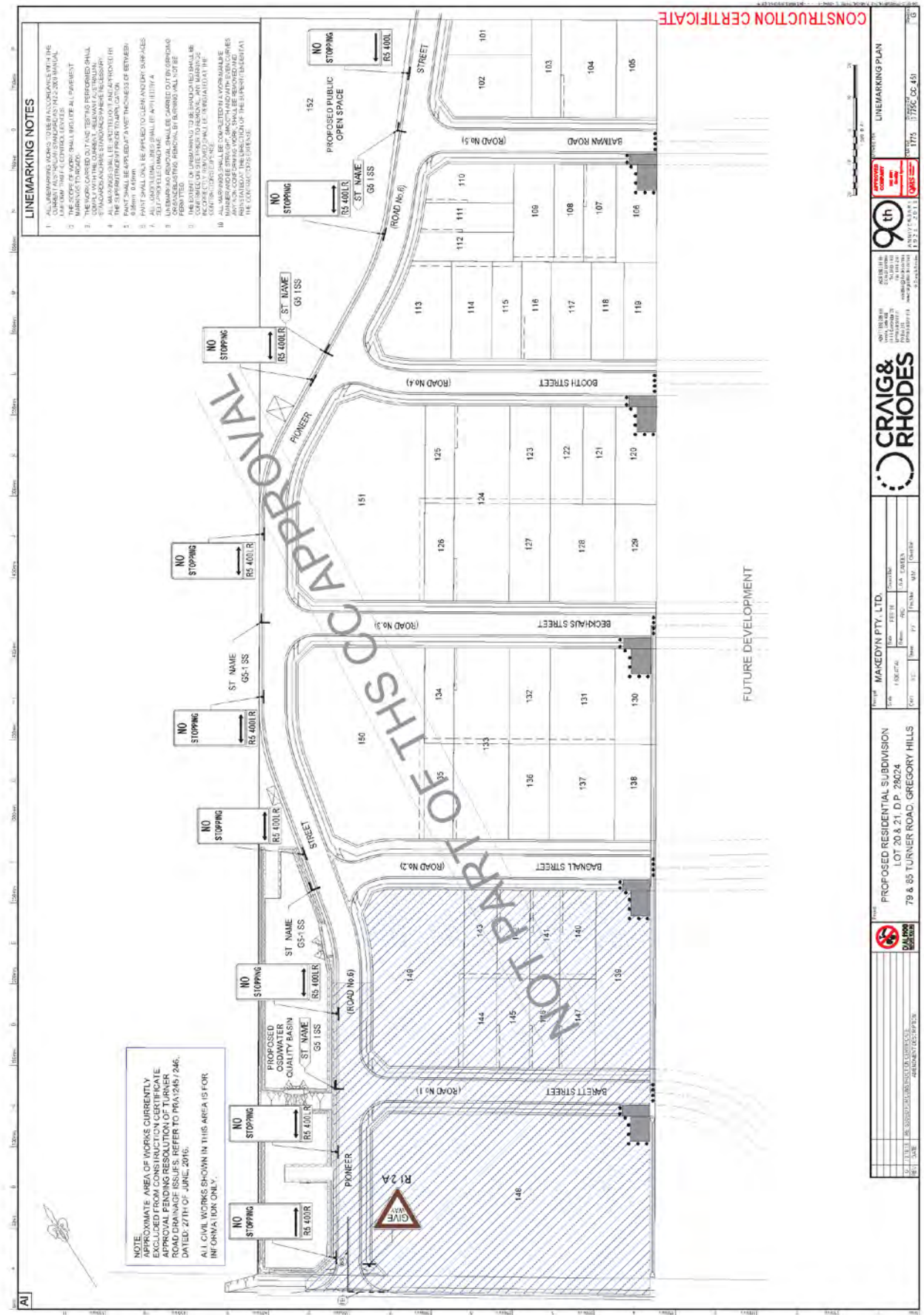
ATTACHMENTS

1. Locality Plan - Pioneer Street, Gregory Hills - No Stopping Signage
2. Engineering Drawing - Pioneer Street, Gregory Hills - No Stopping Signage

LTC21

Attachment 1





LINEMARKING NOTES

1. ALL LINEMARKING WORKS TO BE IN ACCORDANCE WITH THE CHARTER (AS APPLICABLE) AND STANDARDS IN THE 2004 MANUAL OF ROAD DESIGN (MURD) AND THE 2004 MANUAL OF ROAD DESIGN (MURD) CONTROL NOTES.
2. ALL LINEMARKING WORKS SHALL BE FOR ALL PAVEMENT MARKINGS TO ROAD.
3. THE WORKS CARRIED OUT AND TESTS PERFORMED SHALL COMPLY WITH THE STANDARDS AND SPECIFICATIONS IN THE CLASSIFICATION OF ROADWORKS (AS APPLICABLE) AND THE CLASSIFICATION OF ROADWORKS (AS APPLICABLE).
4. ALL LINEMARKING WORKS SHALL BE IN ACCORDANCE WITH THE STANDARDS AND SPECIFICATIONS IN THE CLASSIFICATION OF ROADWORKS (AS APPLICABLE) AND THE CLASSIFICATION OF ROADWORKS (AS APPLICABLE).
5. PAINT SHALL BE APPLIED AT A NET THICKNESS OF BETWEEN 0.5mm TO 1.0mm.
6. ALL LINEMARKING SHALL BE APPLIED TO CLEAN, DRY SURFACES.
7. ALL LINEMARKING SHALL BE APPLIED WITHIN 48 HOURS OF THE DATE OF THE CONTRACT.
8. ALL LINEMARKING SHALL BE APPLIED WITHIN 48 HOURS OF THE DATE OF THE CONTRACT.
9. ALL LINEMARKING SHALL BE APPLIED WITHIN 48 HOURS OF THE DATE OF THE CONTRACT.
10. ALL LINEMARKING SHALL BE APPLIED WITHIN 48 HOURS OF THE DATE OF THE CONTRACT.

NOTE:
APPROXIMATE AREA OF WORKS CURRENTLY EXCLUDED FROM CONSTRUCTION CERTIFICATE ROADWORKS OF ISSUES REFER TO DRAWING 246, DATED 27TH OF JUNE, 2016.
ALL CIVIL WORKS SHOWN IN THIS AREA IS FOR INFORMATION ONLY.

90th CRAIG & RHODES

PROPOSED RESIDENTIAL SUBDIVISION
LOT 20 & 21, D.P. 29024
79 & 85 TURNER ROAD, GREGORY HILLS

MAKEDYN PTY. LTD.

DATE: 15/11/2016
DRAWN: J. L. LAMBERT
CHECKED: J. L. LAMBERT
SCALE: AS SHOWN

CONSTRUCTION CERTIFICATE



LOCAL TRAFFIC COMMITTEE

LTC22

SUBJECT: ROCHFORD ROAD, GLEDWOOD HILLS - SIGNAGE, LINEMARKING AND DEVICES

FROM: Manager Infrastructure Planning

TRIM #: 16/313328

ELECTRONIC MEETING ITEM DATE: 17 October 2016

PURPOSE OF REPORT

To document concurrence previously provided by the Local Traffic Committee through an Electronic Meeting for the construction of new road associated with the development of Gledswood Hills Stage 24B. This is related to DA number 2015/1438. The location is highlighted on **Attachment 1**.

MAIN REPORT

A signage and line marking plan has been received by Council for the construction of a new road associated with the development of Gledswood Hills Stage 24B. This is related to DA number 2015/1438. The location is highlighted on **Attachment 1**.

The Engineering Drawing No.TR24-C1-505 Revision 04 prepared by Arcadis Consulting, provides details of the proposed Double Barrier lines on the curves on Road MC01 (**Attachment 2**). The plan is considered to be in accordance with Austroads, Australian Standards and RMS supplements for the placement of regulatory signage and line marking.

| Electronic Meeting Reference | Agreed recommendation of the Local Traffic Committee |
|-------------------------------------|---|
| 2016/56 | <p>The Local Traffic Committee recommends that Council approves the proposed Double Barrier lines on Road MC01, just north of Rochford Road, Gledwoods Hill as shown on the Engineering Drawing No. TR24-C1-505 Revision 04 subject to:</p> <ul style="list-style-type: none"> i. The installation being completed by the applicant at its cost; and ii. Street lighting levels for devices being in accordance with Australian Standard AS/NZS 1158, subject to further Council approval of the lighting design. |

This recommendation was supported unanimously by the four voting members.

This recommendation has been resolved by a Council Officer under Delegated Authority.

RECOMMENDED

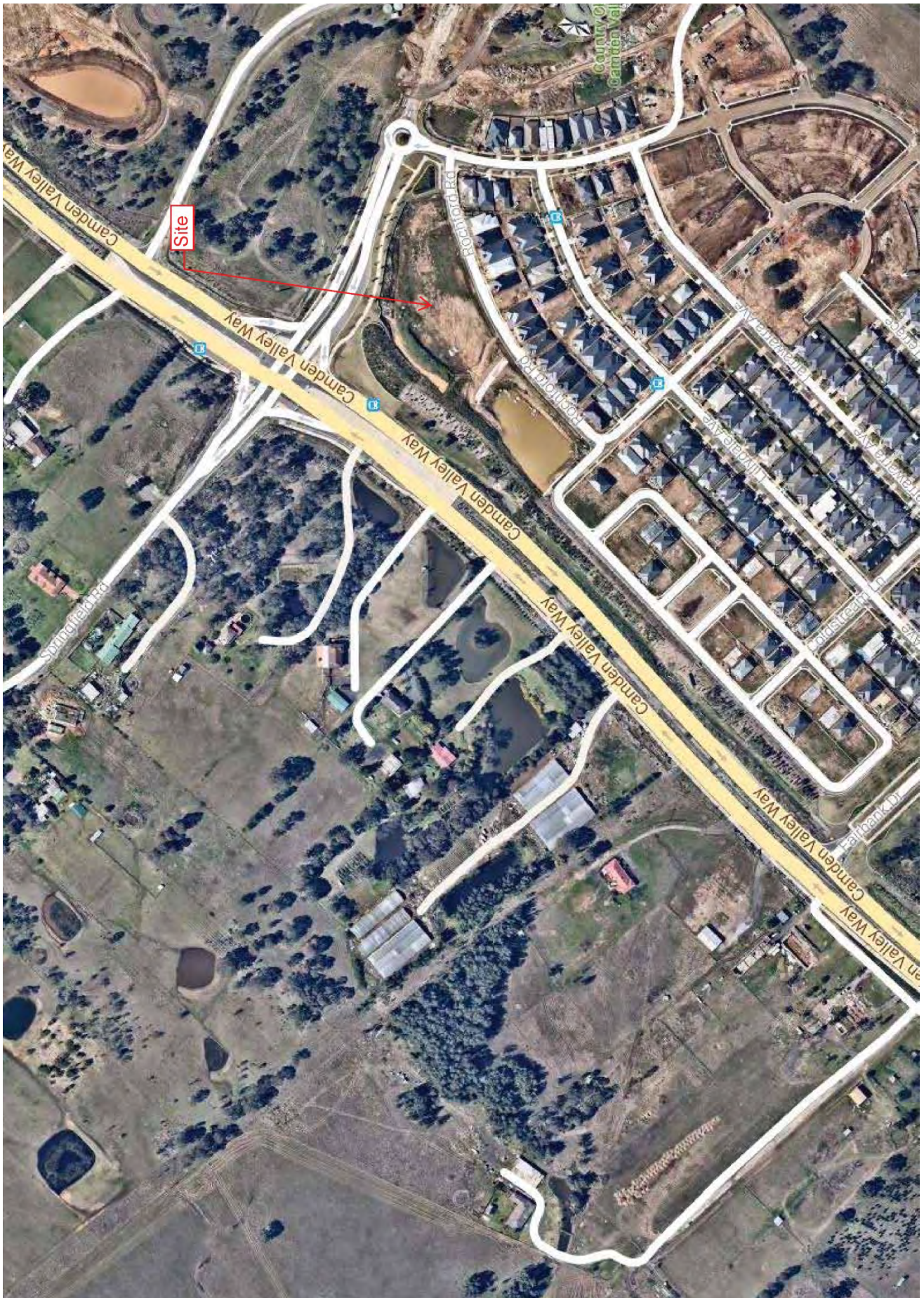
That Council receives and notes the report.

ATTACHMENTS

1. Locality Plan - Rochford Road, Gledswood Hills - Signage, Linemarking and Devices
2. Engineering Drawing - Rochford Road, Gledswood Hills - Signage, Linemarking and Devices

LTC22

Attachment 1





LOCAL TRAFFIC COMMITTEE

LTC23

SUBJECT: AUSTRALIAN RED CROSS BLOOD SERVICE DONORMOBILE VEHICLE - TEMPORARY SUSPENSION OF PARKING BAYS IN 2017

FROM: Manager Infrastructure Planning

TRIM #: 16/316555

ELECTRONIC MEETING ITEM DATE: 25 October 2016

PURPOSE OF REPORT

To document concurrence previously provided by the Local Traffic Committee through an Electronic Meeting for the Australian Red Cross Blood Service to park their vehicle for visits in 2017.

MAIN REPORT

The Australian Red Cross Blood Service operates a mobile blood donor service using a large walk-in vehicle and trailer. As per previous years, the Blood Service is proposing to use seven 90 degree angle parking spaces on the south-west side of the Oxley/Mitchell Streets Car Park (adjacent to Woolworths) to set up the service (see **Attachment 1**). The dates proposed for the Donormobile visits in 2017 are:

- Visit 1: Monday 13 February - Friday 17 February 2017;
- Visit 2: Monday 8 May - Friday 12 May 2017;
- Visit 3: Monday 31 July - Friday 4 August 2017; and
- Visit 4: Monday 30 October - Friday 3 November 2017.

The vehicle has successfully operated in this location in the past. The timing may coincide with the upcoming construction of the decked car park at the Civic Centre, however, it is not considered that the proposal would have a significant impact on parking provision or traffic operation in the areas. It is therefore recommended that concurrence is given to the application, subject to conditions.

| Electronic Meeting Reference | Agreed recommendation of the Local Traffic Committee |
|------------------------------|---|
| 2016/57 | <p>The Local Traffic Committee recommends that Council:</p> <ul style="list-style-type: none"> i. gives concurrence for the temporary suspension of seven parking spaces on the south-west side of the Oxley/Mitchell Streets Car Park, Camden, on: <ul style="list-style-type: none"> - Monday 13 February - Friday 17 February 2017; - Monday 8 May - Friday 12 May 2017; - Monday 31 July - Friday 4 August 2017; and - Monday 30 October - Friday 3 November 2017. ii. The applicant must provide evidence of current Public Liability Insurance, value to \$20 million; iii. The applicant is to notify Council of any variation on the approved |

| | |
|--|---|
| | <p>date and conditions of approval and obtain a revised approval on this matter;</p> <p>iv. concurrence is subject to traffic aisles within the car parks being kept clear at all times for the duration of the mobile blood donor service being set up and operational within the car parks;</p> <p>v. concurrence is subject to the applicant advising adjacent businesses of the dates in 2017 when the car parks will be utilised by the Blood Service, at least seven days prior to the first visit; and</p> <p>vi. concurrence is subject to the applicant organising, installing and removing all barriers and signs associated with the temporary suspension of parking spaces on the approved dates.</p> |
|--|---|

This recommendation was supported unanimously by the four voting members.

This recommendation has been resolved by a Council Officer under Delegated Authority.

RECOMMENDED

That Council receives and notes the report.

ATTACHMENTS

1. Locality Plan - Australian Red Cross Blood Service Donormobile Vehicle

Oxley / Mitchell Streets Car Park, Camden





LOCAL TRAFFIC COMMITTEE

LTC24

SUBJECT: WHITE RIBBON DAY COMMUNITY BREAKFAST - TEMPORARY SUSPENSION OF PARKING BAYS ON OXLEY STREET

FROM: Manager Infrastructure Planning

TRIM #: 16/316582

ELECTRONIC MEETING ITEM DATE: 25 October 2016

PURPOSE OF REPORT

To document concurrence previously provided by the Local Traffic Committee through an Electronic Meeting for the suspension of on-street parking spaces on Oxley Street to facilitate the Camden White Ribbon Breakfast.

MAIN REPORT

A request has been received for the suspension of on-street parking spaces on Oxley Street to facilitate the Camden White Ribbon Breakfast on 30 November 2016.

The White Ribbon Breakfast will be held in the Camden Civic Centre to raise awareness of domestic violence and its impact on our community. Council is proposing to suspend 30 metres of 1P parking on the eastern side of Oxley Street to park two (2) Council waste trucks displaying campaign messaging from 6am to 8am (see **Attachment 1**).

It is not considered that the proposal would have a significant impact on parking provision or traffic operation in the area. It is therefore recommended that concurrence is given to the application, subject to conditions.

| Electronic Meeting Reference | Agreed recommendation of the Local Traffic Committee |
|-------------------------------------|--|
| 2016/58 | <p>That the Local Traffic Committee recommends that Council in Oxley Street, Camden, outside Camden Civic Centre:</p> <ul style="list-style-type: none"> i. approves temporary suspension of 30 metres of parking spaces on the eastern side on Wednesday 30 November 2016 from 6am to 8am; and ii. is responsible for organising, installing and removing all barriers and signs associated with the temporary suspension of parking spaces on the approved date. |

This recommendation was supported unanimously by the four voting members.

This recommendation has been resolved by a Council Officer under Delegated Authority.



RECOMMENDED

That Council receives and notes the report.

ATTACHMENTS

1. Locality Plan - White Ribbon Day Community Breakfast - Temporary Suspension of Parking Bays on Oxley Street





LOCAL TRAFFIC COMMITTEE

LTC25

SUBJECT: TURNER ROAD, CURRANS HILL - NO STOPPING RESTRICTIONS ASSOCIATED WITH THE DEVELOPMENT OF LOT 105 TURNER ROAD

FROM: Manager Infrastructure Planning

TRIM #: 16/322167

ELECTRONIC MEETING ITEM DATE: 6 November 2015

PURPOSE OF REPORT

To document concurrence previously provided by the Local Traffic Committee through an Electronic Meeting for the placement of No Stopping restrictions associated with the development of LOT 105 Turner Road, Currans Hill.

MAIN REPORT

A signage plan has been received by Council for the installation of No Stopping Restrictions along the site frontage for the proposed Childcare Centre development at LOT 105 Turner Road, Currans Hill (**Attachment 1** shows a locality map and **Attachment 2** shows proposed signage).

The proposed restriction is to ensure the kerbside is clear at all times for vehicles exiting the site and at the intersection as intended by the consent condition.

The plan is considered to be in accordance with Austroads, Australian Standards and RMS supplements for the placement of regulatory signage and line marking. It is recommended that the Committee supports the proposed measure.

| Electronic Meeting Reference | Agreed recommendation of the Local Traffic Committee |
|------------------------------|---|
| 2016/59 | The Local Traffic Committee recommends that Council approves, on Turner Road and Ascot Drive, Currans Hill, installation of No Stopping signage (R5-400) along the site frontage of Lot 105 Turner Road as detailed in the Signage Plan prepared by Jalenco Homes Pty LTD dated 11/2015 subject to the installation being completed by the applicant at their cost. |

This recommendation was supported unanimously by the four voting members.

This recommendation has been resolved by a Council Officer under Delegated Authority.

RECOMMENDED

That Council receives and notes the report.

ATTACHMENTS

1. Locality Plan - Turner Road, Currans Hill - No Stopping Restrictions Associated with the Development of Lot 105 Turner Road
2. Proposed Signage - Turner Road, Currans Hill - No Stopping Restrictions Associated with the Development of Lot 105 Turner Road



Scale: 1:2000
 Printed Date: 07:11:16



This map has been prepared from Council records by the Land Information section. If you intend to rely on this information you should have this verified.

Camden Council accepts no responsibility for any errors or omissions. This map should not be reproduced without the permission of Camden Council.

